



MMMV / LOV
 VENUSTIANO CARRANZA INTERNATIONAL AIRPORT

MMMV/LOV
 Apt Elev 1864'
 N26 57.3 W101 28.2

JEPPESEN
 24 MAR 17 (10-9) Eff 30 Mar

MONCLOVA, MEXICO
 MONCLOVA INTL

Address:
 Libramiento Poniente y carretera
 Federal 30 Cd. Frontera, Coahuila.

Telephone: +52 (722) 273 0981

Operational information:

Operational hours: Winter 1300-0100
 UTC / Summer 1200-0000 UTC.

Customs and Immigration: During
 airport operational hours.

Overtime: Available, must be requested
 two hours before airport closure.

Fuel available: Avgas 100/130 & Jet A.

Catering: Available, with a 24 hrs
 request.

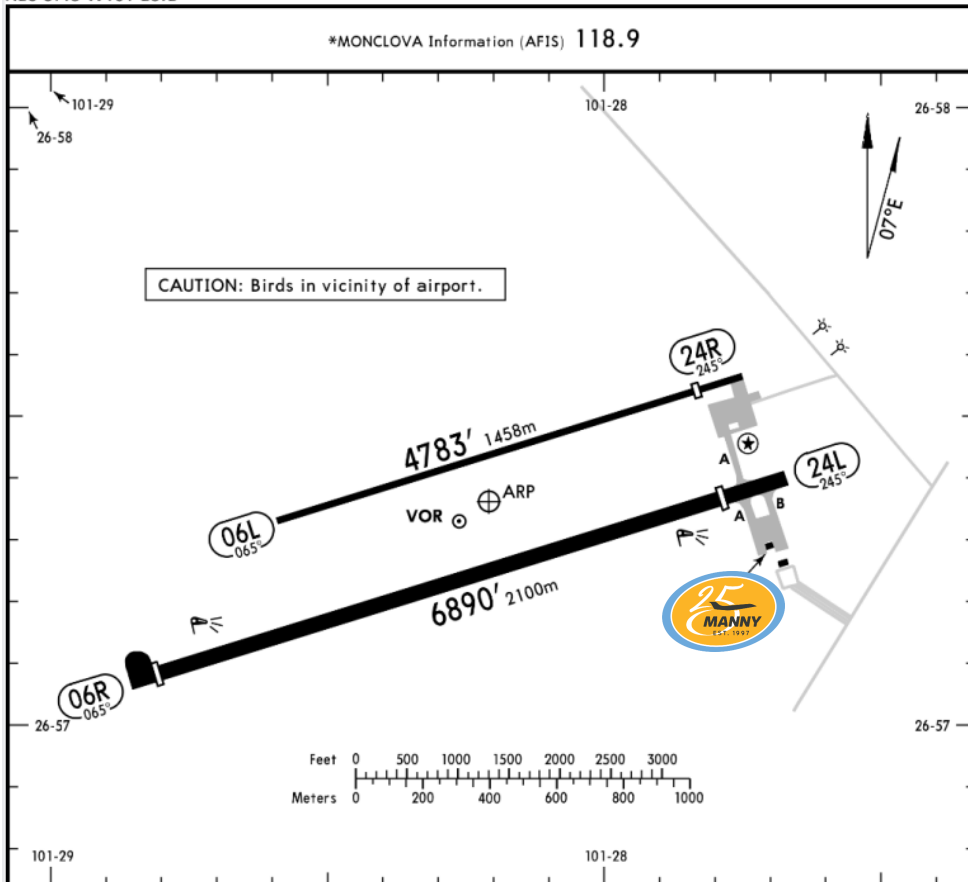
GSE: Available.

Fuel method of payment:
 Credit card or cash.

AMEX is not accepted.

Manny's Representative: Orlando
 Quintero and Román Acosta.

Fire Cat: III.



ADDITIONAL RUNWAY INFORMATION

RWY		USABLE LENGTHS LANDING BEYOND	TAKE-OFF	WIDTH
06L			4314' 1315m	66'
24R		4314' 1314m		20m
06R	HIRL PAPI-L (angle 3.0°)	6611' 2015m	6234' 1900m	148'
24L		6234' 1900m	6611' 2015m	45m

TAKE-OFF

FOR FILING AS ALTERNATE

	Rwys 06R, 24L		Rwys 06L, 24R	
	DAY	NIGHT		
1 & 2 Eng	500-1		VFR	A
3 & 4 Eng	500-1/2			B
				C
				D



MMMV / LOV VENUSTIANO CARRANZA INTERNATIONAL AIRPORT

Arrivals:

1. Aircraft needs to follow ATC instructions for taxiing to the main platform.
2. Crew and passenger passports will be asked by one of our staff representatives to take them to immigration facilities.
3. Passengers must walk inside the general aviation building to make the CIQ (Customs, Immigration and quarantine) processes. Luggage cannot be inspected without passenger's presence.
4. The whole process will take around 20-30 minutes.

Departures:

1. Crew and passenger passports will be asked by one of our staff representatives to take them to immigration facilities.
2. The passengers and crew must perform an immigration and customs departure clearance process; once this is finished they may board the aircraft.
3. The whole process will take around 20-30 minutes.

