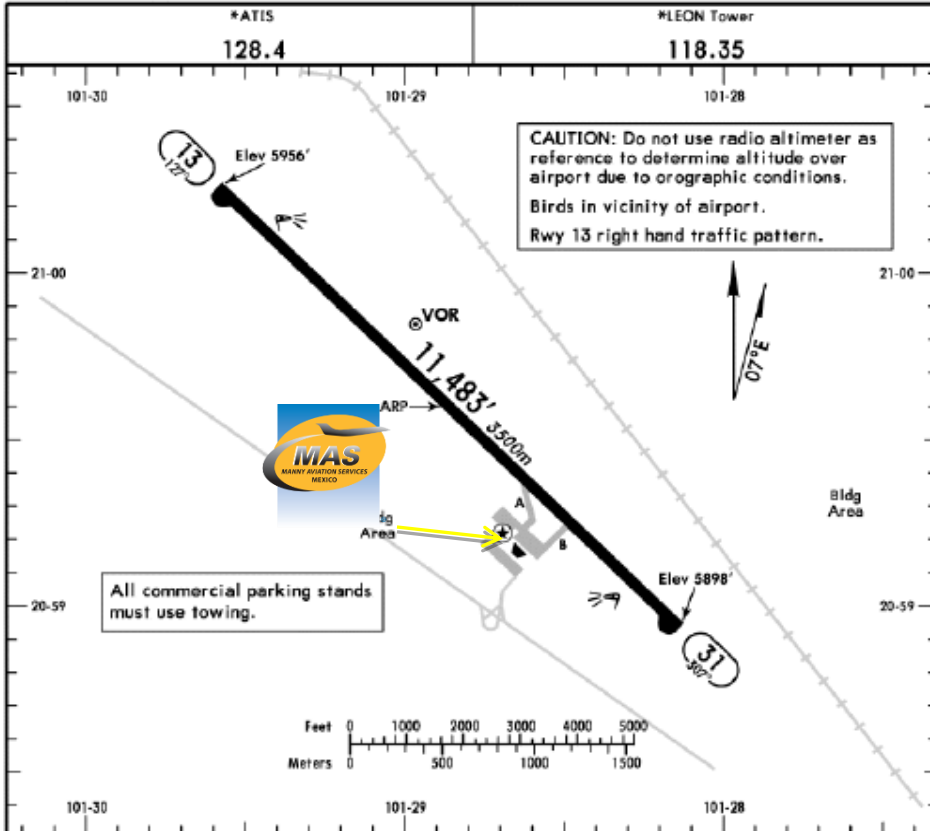




MMLO/BJX
DE GUANAJUATO INTERNATIONAL AIRPORT

MMLO/BJX
Apt Elev 5956'
N20 59.6 W101 28.9

JEPPESEN LEON, MEXICO
4 FEB 11 (13-1) Eff 10 Feb DE GUANAJUATO INTL



RWY	ADDITIONAL RUNWAY INFORMATION		USABLE LENGTHS			WIDTH
	HIRL	REIL	Threshold	Glide Slope	TAKE-OFF	
13 31	HIRL	REIL	PAPI-L (angle 3.0°)			148' 45m

	TAKE-OFF		FOR FILING AS ALTERNATE	
	Rwy 13	Rwy 31	A	B
1 & 2 Eng	300-½	300-1	A	1200-3
3 & 4 Eng			B	
			C	
			D	

Address:
Silao - León Km 5.5, Col. Nuevo México, 36270 Silao, Gto ZC. 36270.

Telephone: +52 (722) 273 0981.

Operational information:

Operational hours: Winter 1000-0600
UTC / Summer 0900-0500 UTC.

Customs and Immigration: During airport operational hours.

Fuel available: Avgas 100/130, Jet A-1.

Fuel delays can be expected as the government fuel provider has top priority for commercial operations.

Fuel method of payment:
Credit card, debit card, Uvair-World Fuel card or ASA release.

Catering: Catering orders are available upon request. (24 hrs in advance).

Manny's Representative: Adalberto Muñoz Ramírez.

GSE: GSE available with prior request.

Fire Cat: VII.

Reproduced with permission of Jeppesen. NOT FOR NAVIGATIONAL USE. © Jeppesen, 2013.

CHANGES: Magnetic variation, runway end elevation added.

© JEPPESEN, 1999, 2011. ALL RIGHTS RESERVED.



MMLO/BJX DE GUANAJUATO INTERNATIONAL AIRPORT

Arrival

1. Upon arrival aircraft must follow ATC instructions to taxi into General Aviation apron through taxiways A or B depending on the arriving runway.
2. Crew and passengers will deplane and follow agent instructions, being transported to main terminal building for CIQ process.
3. When all passengers deplane, Customs and Agriculture agents will come onboard to make a quick inspection.
4. Passengers will be guided inside the main terminal building to make the CIQ (Customs, Immigration and quarantine) processes. Luggage cannot be inspected without passenger's presence.
5. The whole procedure will take around 20-30 minutes.
6. Crew can return to the plane through direct access door to General Aviation Apron.
7. Transportation can wait either outside Main terminal building or GAT parking spots.

Departure

1. Crew and passenger passports will be asked by one of our staff representatives to take them to main terminal building.
2. The luggage will be taken inside the Xray machine for inspection.
3. The whole procedure will take around 20-30 minutes.

