



MMDO/DGO DURANGO INTERNATIONAL AIRPORT

MMDO/DGO
Apt Elev 6104'
N24 07.6 W104 31.6

JEPPESEN
22 APR 16 (10-9) Eff 28 Apr

DURANGO, MEXICO
DURANGO INTL

Address:

Autopista Durango – Gómez Palacio,
Km 15.5, Durango, Durango.

Telephone: +52 (722) 273 0981.

Operational Information:

Operational hours: Winter 1200-0200
UTC / Summer 1100-0100 UTC.

Customs and Immigration: During airport
operational hours.

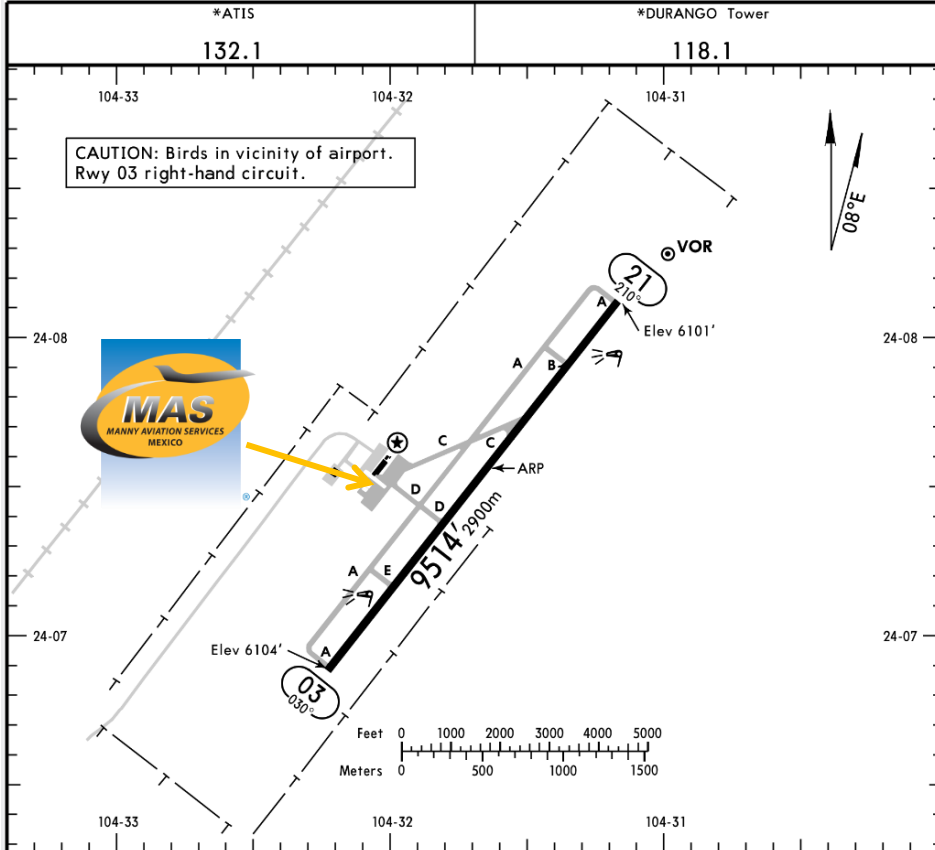
Fuel available: Avgas 100/130, Jet A-1.

Fuel delays can be expected as the
government fuel provider has top priority
for commercial operations.

Fuel method of payment:

Credit card, debit card, Uvair-World Fuel
card or ASA release.

Fire Cat: VI.



ADDITIONAL RUNWAY INFORMATION

RWY	USABLE LENGTHS	LANDING BEYOND		TAKE-OFF	WIDTH
		Threshold	Glide Slope		
03 21	HIRL REIL PAPI-L (angle 3.0°)				148' 45m

	TAKE-OFF	FOR FILING AS ALTERNATE	
	All Rwys	A	B
1 & 2 Eng	400-1	800-2	C
3 & 4 Eng	300-1/2		D



MMDO/DGO DURANGO INTERNATIONAL AIRPORT

Arrival

1. Upon arrival, crew must follow ATC instructions for taxiing to Commercial Aviation apron.
2. Crew and passenger passports will be asked by one of our staff representatives to take them to immigration facilities.
3. When all passengers deplane, customs, federal police and agriculture officers will come onboard to make a quick inspection about any remaining luggage, food or people.
4. Passengers must walk inside the general aviation building to make the CIQ (Customs, Immigration and quarantine) processes. Luggage cannot be inspected without passenger's presence.
5. The whole process will take around 20-30 minutes.

Departure

1. Crew and passenger passports will be asked by one of our staff representatives to take them to immigration facilities.
2. Passengers and Crew will go through Immigration and Customs and then they may board the aircraft.
3. The whole procedure will take around 10-15 minutes.

