

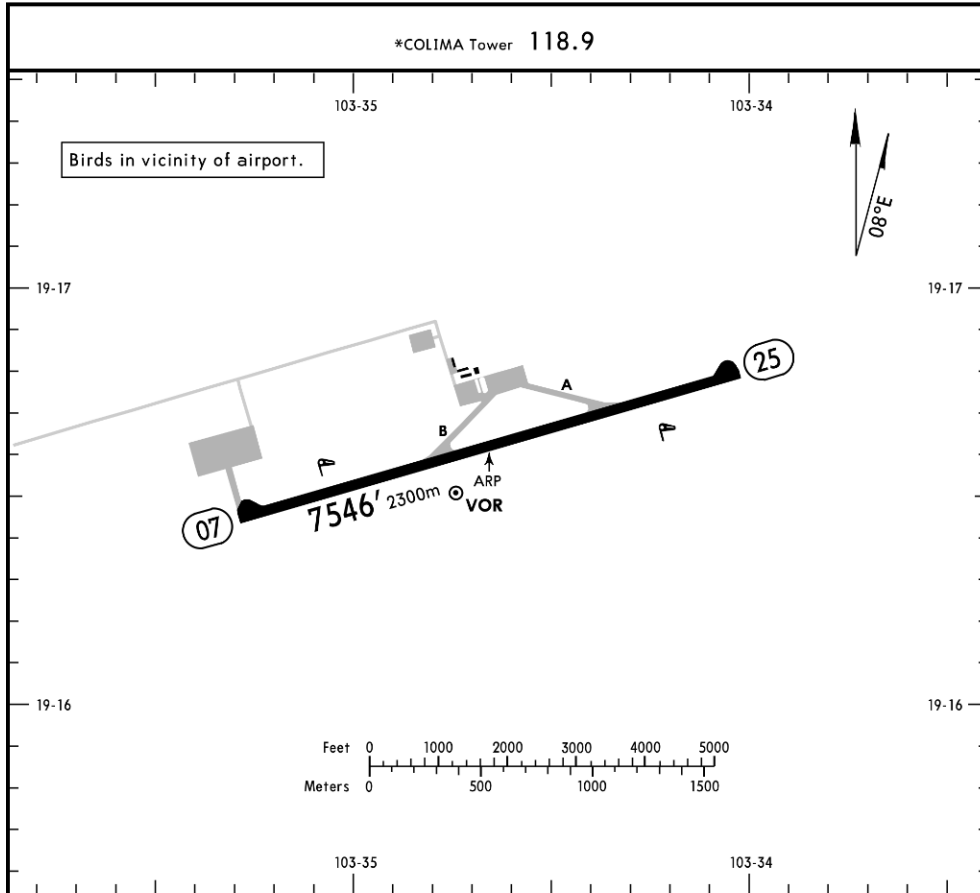


MMIA / CLQ
COLIMA DOMESTIC AIRPORT

MMIA/CLQ
Apt Elev **2467'**
N19 16.6 W103 34.7

JEPPESEN
27 JAN 17 **(10-9)** Eff 2 Feb

COLIMA, MEXICO
COLIMA



RWY	MIRL PAPI-L (angle 3.0°)	USABLE LENGTHS		TAKE-OFF	WIDTH
		Threshold	Glide Slope		
07 25					148' 45m

TAKE-OFF & DEPARTURE PROCEDURE			FOR FILING AS ALTERNATE	
	Rwy 25	Rwy 07	A	1000-3
1 & 2 Eng	500-1	800-1½	B	
3 & 4 Eng		500-¾	C	
			D	

DEPARTURE PROCEDURE: MCAs for departing the station,
V-61 & J-25 to GDL 14400'; V-18 & UJ-18 to UPN 9200';
UJ-9 to ZIH 7000'; V-18 & UJ-18 to ZLO 6300'; UJ-9 to PVR 8200'.

Address:

Domicilio conocido, Buenavista,
Municipio de Cuauhtémoc, Colima
ZC. 28590.

Telephone: +52 (722) 273 0981.

Operational information

Operational hours: Winter 1300-0100
UTC/ Summer 1200-0000 UTC.

Customs and Immigration: Not available.

Fuel available: Avgas 100/130 & Jet A-1.

Fuel delays can be expected as the government fuel provider has top priority for commercial operations.

Fuel method of payment

Credit card, debit card, Uvair-World Fuel card or ASA release.

Fire Cat: VI.



MMIA / CLQ COLIMA DOMESTIC AIRPORT

Arrival

1. Upon arrival Crew must follow ATC's instructions to taxi into General Aviation Apron.
2. When passengers descend from AC, one representative of Federal Police will check AC and passengers' luggage.
3. The whole process will take around 10-15 minutes.

Departure

1. Crew and passengers arrive to General Aviation Terminal.
2. Our Agent will be waiting for Crew and passengers help them with baggage and coordinate all services for departure.
3. The whole process will take around 10-15 minutes.

