

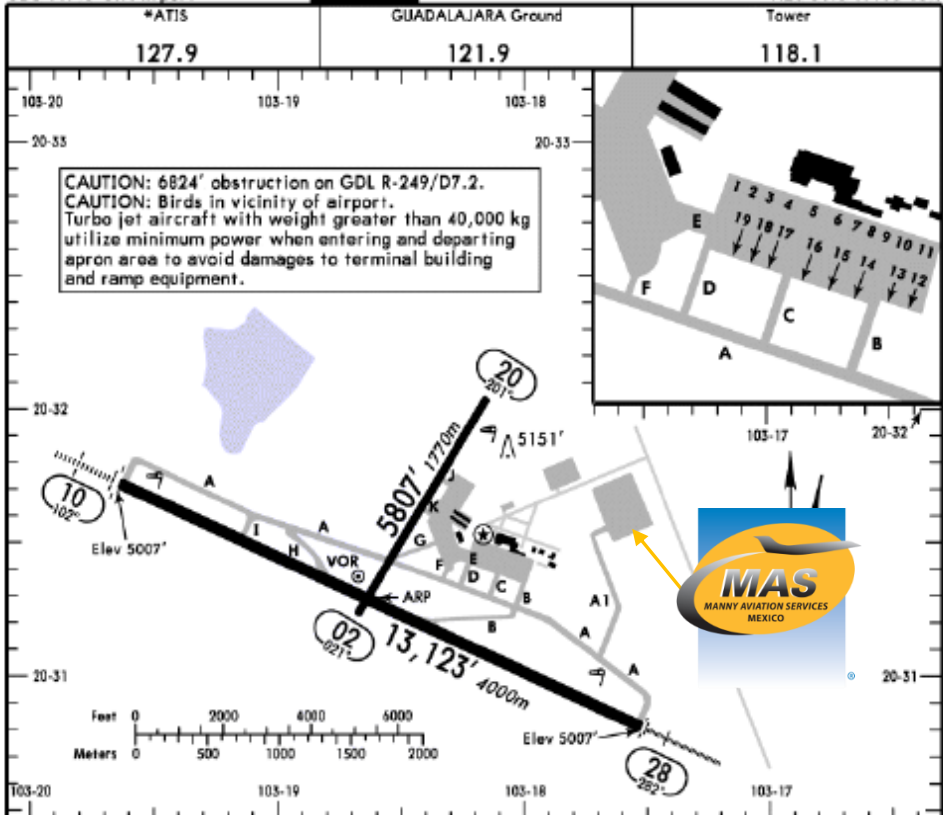


MMGL / GDL
MIGUEL HIDALGO Y COSTILLA INTERNATIONAL AIRPORT

MMGL
Apt Elev **5012'**
GDL 117.3-On Airport

JEPPESEN **GUADALAJARA, MEXICO**
DON MIGUEL HIDALGO INTL
N20 31.3 W103 18.7

7 JUL 00 (11-1)
Eff 13 Jul



RWY	ADDITIONAL RUNWAY INFORMATION			
	USABLE LENGTHS		TAKE-OFF	WIDTH
	Threshold	LANDING BEYOND		
02				115' 35m
10	HIRL SALS PAPI (angle 3.0°)		11,909' 3630m	197' 60m
28	HIRL ALS PAPI (angle 3.0°)	RVR	11,788' 3593m	

TAKE-OFF & DEPARTURE PROCEDURE						FOR FILING AS ALTERNATE	
Rwy 10		Rwy 28		Rwys 02, 20		Precision	Non-Precision
Regular Commercial Jet Aircraft							
HIRL and RCLM Required							
An alternate airport is required when meteorological conditions are less than the landing minimums. The pilot should Report 7 longitudinal runway lights in the direction of take-off as a minimum for visibility.				DAY	NIGHT		
2 Eng	1/4	1 & 2 Eng	600-1	1000-2	1000-2	A	
3 & 4 Eng		3 & 4 Eng	1/2		NOT APPLICABLE	B	
						C	600-2
						D	1000-3
Rwy 10-28: For departures and MCAs see Guadalajara 10-3 and 10-3A.		PVR 8100; V-3-5 & UJ-12 to TNY 8300'; UJ-27 to DGO 8000'; V-61 & UJ-11 to AGU 8000'; J-25 to SLP 8100; V-26-61W to AGU 7700'; V-26 & UJ-100 to ZCL 7700'; V-32 to BJX 8200'; V-14 & UJ-14 to QET 8200'; V-5 & UJ-12 to MLM 8500'; V-3 & UJ-3-7 to UPN 8600'; UJ-27 to ZIH 9100'; UJ-3-7 to MZT 8100'; V-61 & J-25 to COL 10800'.					

CHANGES: New chart format. © JEPPESEN SANDERSON, INC., 2000. ALL RIGHTS RESERVED.

Address:

Km 17.5 Carretera Guadalajara a Chapala Tlajomulco de Zuniga. Jalisco

Telephone: +52 (722) 273 0981.

Operational information:

Operational hours:

24/ 7.

Business Aviation service:

FBO 07:00 to 22:00 L.T.

Overtime is available upon request and under approval.

Customs and immigration:

24 / 7.

Fuel available:

Avgas 100/130, Jet A.

Fuel method of payment:

Credit or debit cards, fuel releases must be addressed to **AEROTRON FBO**.

Fire Cat: VII.

Catering service: Available prior 24 hrs. before your delivery time.

GSE: Available.

Rental car and VIP Ground transportation is available.

Reproduced with permission of Jeppesen. NOT FOR NAVIGATIONAL USE. © Jeppesen, 2013.



MMGL / GDL MIGUEL HIDALGO Y COSTILLA INTERNATIONAL AIRPORT

Arrivals:

1. Upon the aircraft arrival, crew will have to follow ATC instructions to taxi to AEROTRON FBO via A1 taxiway.
2. CIQ will be performed inside the FBO building.
3. Passengers must walk inside building to make the CIQ (Customs, Immigration and quarantine) processes. Luggage cannot be inspected without their presence.
4. The whole process will take around 10-15 minutes.

Departures:

1. For departure the passenger and crew will arrive into the FBO and they will complete customs and immigration procedures inside the facilities.
2. After this process, the passenger will be cleared to board the aircraft.
3. The whole procedure will take around 20-30 minutes.

