



MMAA/ACA
 GRAL. JUAN N. ÁLVAREZ INTERNATIONAL AIRPORT

MMAA/ACA

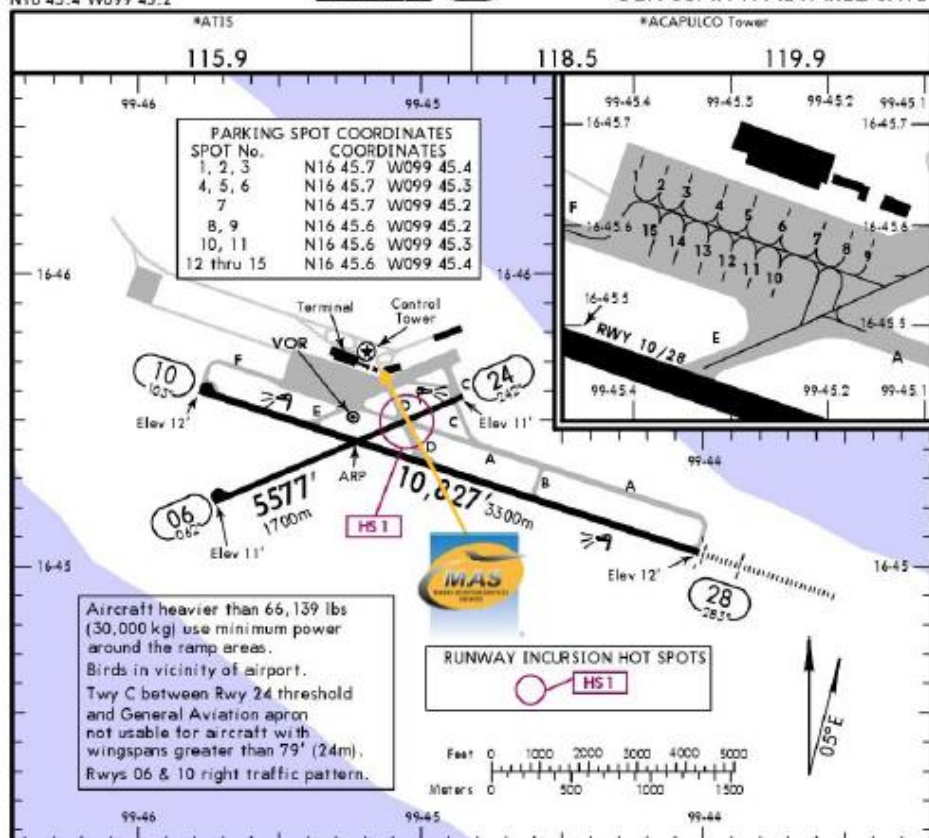
Apt Elev 16'
 N16 45.4 W099 45.2

JEPPESEN

20 APR 18
 E11 26 Apr (10-9)

ACAPULCO, MEXICO

GEN JUAN N ALVAREZ INTL



Address: Boulevard de las Naciones
 S/N Plan de los Amates, Acapulco,
 Guerrero.
 ZC 50130
Telephone: +52 (722) 273 0981

Operational information:

Operational hours: 24/7

Customs and Immigration: 24/7

Fuel available: Avgas 100/130 & Jet A

Fuel delays can be expected as the government fuel provider has top priority for commercial operations.

Fuel method of payment:

Credit card, debit card, World Fuel card or ASA release.

Catering: Catering orders are available upon request (24 h in advance).

Manny's Representatives: Manuel Garay Leyva & Jesus Rodríguez.

GSE: GSE is available upon request at this location

Fire Cat: VIII

RWY	USABLE LENGTHS				WIDTH
	THRESHOLD	GLIDE SLOPE	TAKE-OFF	LANDING BEYOND	
06					115' 35m
10		9669' 2947m			148' 45m
28		9664' 2946m			45m

① Maximum aircraft category usage is "C".

RUNWAY INCURSION HOT SPOTS
 For information only, not to be construed as ATC instructions.
 HS1 Aircraft or vehicles at Twys A and D hold short of Rwy 06/24.

	TAKE-OFF & DEPARTURE PROCEDURE				FOR FILING AS ALTERNATE	
	Rwy 10	Rwy 24	Rwy 06	Rwy 28	Precision	Non-Precision
1 & 2 Eng	400-1	400-1	400-1	400-1½	A B C D	600-2 800-2
3 & 4 Eng	½	200-½	300-1	300-1		

For departure procedures and MCA's see Acapulco SIDs.

CHANGES: Rwy end elevations, Hot Spot, parking positions, cultural features. © JEPPESEN, 1999, 2018. ALL RIGHTS RESERVED.



MMAA/ACA GRAL. JUAN N. ÁLVAREZ INTERNATIONAL AIRPORT

Arrivals:

1. When aircrafts arrive, they must follow ATC commands for taxiing to the General Aviation Apron, normally through D taxiway and then proceed to their Right side.
2. Crew and passenger passports must be delivered to our representatives on the ground to take them to the GAT, where immigration facilities are and the CIQ process is made. They will help crew and passengers and crew members with everything required.
3. All passengers must deplane. Please remember that all luggage must be offloaded and some sort of food items will be disposed at international arrivals.
4. Passengers must walk inside the general aviation building to make the CIQ (Customs, Immigration and quarantine) processes. Luggage cannot be inspected without passenger's presence.
5. The whole process will take around 15-20 minutes, depending on the number of passengers arriving.
6. Transportation services may wait outside the GAT and passengers or crew may get onboard the vehicles after the clearance is finished.

Departures:

1. Our team will ask for crew / passenger's passports and luggage.
2. All luggages will be screened through an x-ray machine.
3. The whole process will take around 15-20 minutes, depending on how many passengers depart.
4. Our team will help crew and passengers with everything needed and will the flight plan.

