



# MMLP / LAP GRAL MANUEL MARQUEZ DE LEON INTERNATIONAL AIRPORT

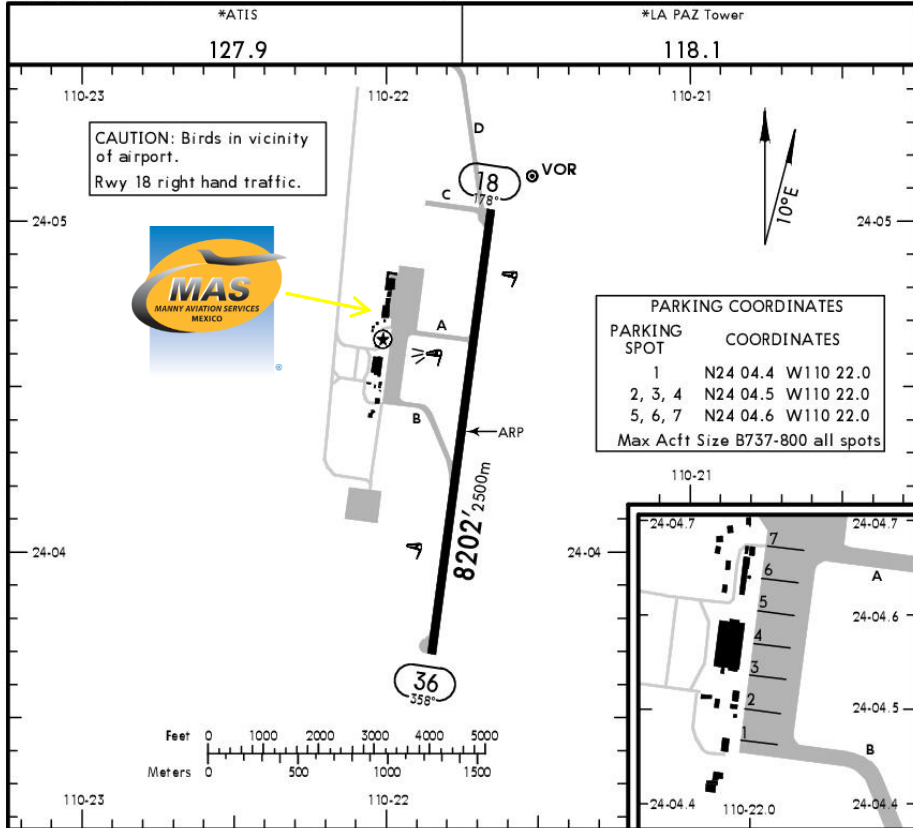
MMLP/LAP

Apt Elev 69'  
N24 04.4 W110 21.8

JEPPESEN

LA PAZ, MEXICO

17 JUL 15 (11-1) GEN MANUEL MARQUEZ DE LEON INTL



**Address:**

Km. 13 Carretera Transpeninsular, La Paz, Baja California Sur ZC. 23201.

**Telephone:** +52 (722) 273 0981.

**Operational information:**

Operational hours: Winter 1400-0600 UTC / Summer 1300-0500 UTC.

Customs and immigration: During airport operational hours.

Fuel available: Avgas 100/130 & Jet A-1.

Fuel delays can be expected as the government fuel provider has top priority for commercial operations.

**Fuel method of payment:**

Credit card, debit card, Uvair-World Fuel card or ASA release.

**AMEX is not accepted.**

**Fire Cat: VII.**

ADDITIONAL RUNWAY INFORMATION

RWY	USABLE LENGTHS	LANDING BEYOND		TAKE-OFF	WIDTH
		Threshold	Glide Slope		
18 36	HIRL REIL PAPI-L (angle 3.0°)				148' 45m

	TAKE-OFF	FOR FILING AS ALTERNATE	
		Precision	Non-Precision
All Rwys			
1 & 2 Eng	600-2	A B C D	
3 & 4 Eng	300-1	600-2	1000-3

For departure procedures and MCA's see La Paz Departures 10-3, 10-3A.

CHANGES: Enhanced accuracy.

© JEPPESEN, 1999, 2015. ALL RIGHTS RESERVED.



# MMLP / LAP GRAL MANUEL MARQUEZ DE LEON INTERNATIONAL AIRPORT

## Arrival

1. Upon the arrival aircraft have to follow ATC instructions for taxiing to the General Aviation or Commercial Apron.
2. Crew and passenger passports will be asked by one of our staff representatives to take them to Immigration facilities.
3. Passengers must walk inside the general aviation building to make the CIQ (Customs, Immigration and quarantine) processes. Luggage cannot be inspected without passenger's presence.
4. The whole procedure will take around 15-20 minutes.

## Departure

1. Crew and passenger passports will be asked by one of our staff representatives to take them to Immigration facilities.
2. The whole procedure will take around 05-10 minutes.

