



# MMPQ/PQM PALENQUE INTERNATIONAL AIRPORT

**MMPQ/PQM**

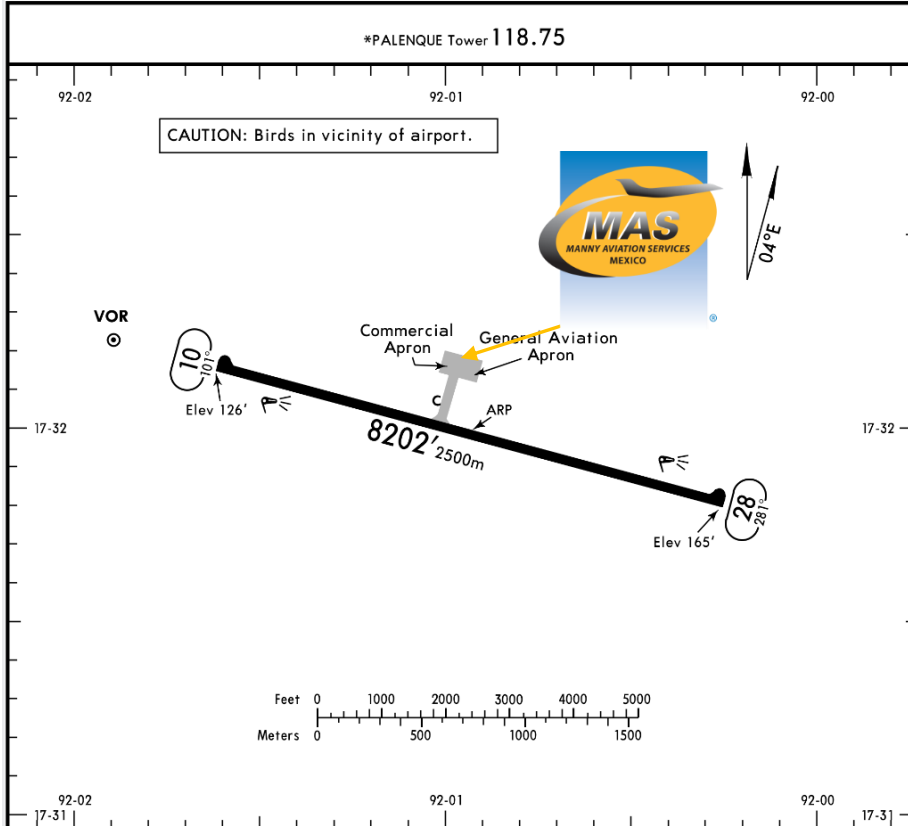
Apt Elev **165'**  
N17 32.0 W092 00.9

**JEPPESEN**

20 MAY 16 **(10-9)** Eff 26 May

**PALENQUE, MEXICO**

PALENQUE INTL



**ADDITIONAL RUNWAY INFORMATION**

RWY	USABLE LENGTHS	LANDING BEYOND		TAKE-OFF	WIDTH
		Threshold	Glide Slope		
10 28	HIRL PAPI-L (angle 3.0°)				148' 45m

**TAKE-OFF**

	Rwy 10	Rwy 28
1 & 2 Eng	500-1	300-1
3 & 4 Eng		

**Address:**

Carretera Federal Catazaja-Rancho Nuevo km. 24.5, Col. Pakal Na ZC. 29960.

**Telephone:** +52 (722) 273 0981.

**Operational information:**

Operational hours: Winter 1300-0100 UTC / Summer 1200-0000 UTC.  
Customs and Immigration: During airport operational hours.  
Fuel available: Jet A-1.

**Fuel method of payment:**

Credit card, debit card, Uvair-World Fuel card or ASA release.

**Fire Cat:** V.



## MMPQ/PQM PALENQUE INTERNATIONAL AIRPORT

### Arrival

1. Upon arrival Aircraft has to follow ATC instructions for taxiing to the general aviation Apron.
2. Crew and passenger passports will be asked by one of our staff representatives to take them to immigration facilities.
3. Passengers must walk inside the general aviation building to make the CIQ (Customs, Immigration and quarantine) processes. Luggage cannot be inspected without passenger's presence.
4. The whole process will take around 15-20 minutes.

### Departure

1. Crew and passenger passports will be asked by one of our staff representatives to take them to immigration facilities.
2. The luggage will be taken inside the Xray machine for inspection.
3. The whole process will take around 15-20 minutes.

