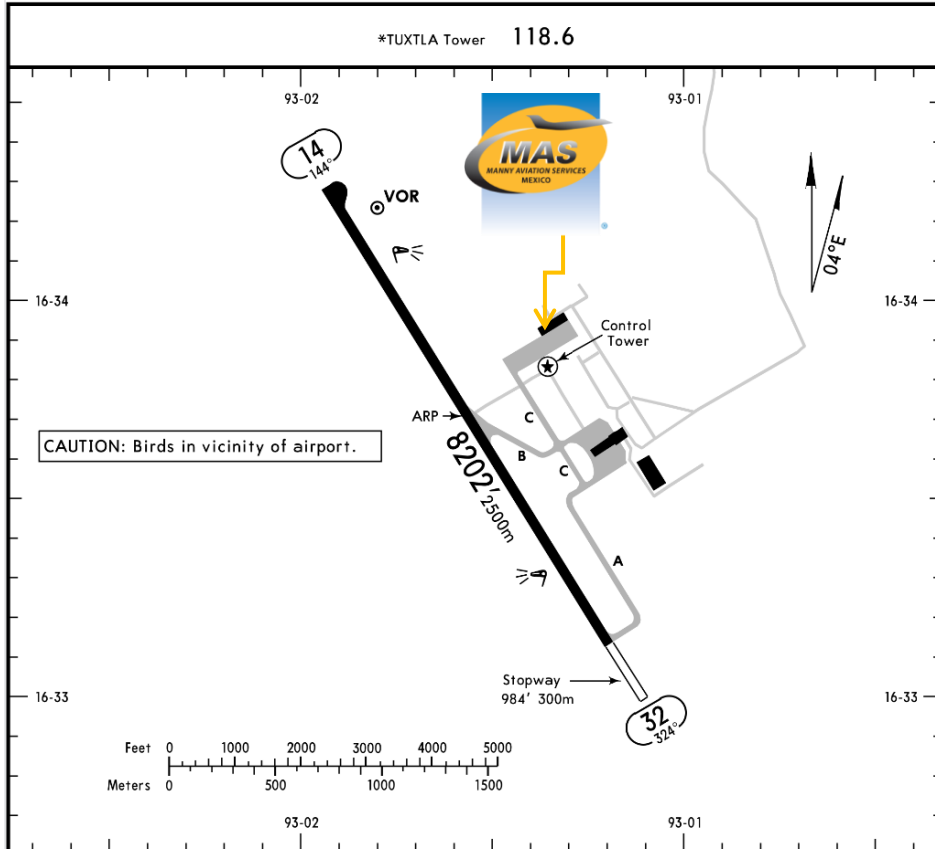




MMTG/TGZ ÁNGEL ALBINO CORZO INTERNATIONAL AIRPORT

MMTG/TGZ
Apt Elev **1491'**
N16 33.7 W093 01.6

JEPPESEN TUXTLA GUTIERREZ, MEXICO
21 OCT 16 (10-9) **ANGEL ALBINO CORZO**



Address:

Km 12.48 carretera vergel Aeropuerto
Chiapa de Corzo, Chiapas
ZC. 29160.

Telephone: +52 (722) 273 0981.

Operational information:

Operational hours: Winter 1300-0500
UTC. / Summer 1200-0400 UTC.

Customs and Immigration: During airport
operational hours.

Fuel available: Avgas 100/130 & Jet A-1.

Fuel delays can be expected as the
government fuel provider has top priority
for commercial operations.

Fuel method of payment:

Credit card, debit card, Uvair-World Fuel
card or ASA release.

Fire Cat: VI.

ADDITIONAL RUNWAY INFORMATION

RWY	HIRL REIL	PAPI-L (angle)	USABLE LENGTHS			WIDTH
			Threshold	Glide Slope	TAKE-OFF	
14		PAPI-L (angle 3.1°)				148'
32		PAPI-L (angle 3.0°)		7061' 2152m		45m

TAKE-OFF		FOR FILING AS ALTERNATE
All Rwy's		
1 & 2 Eng	400-1	800-2
3 & 4 Eng	300-1/2	



MMTG/TGZ ÁNGEL ALBINO CORZO INTERNATIONAL AIRPORT

Arrival

1. Upon arrival Aircraft has to follow ATC instructions for taxiing to the general aviation Apron.
2. Crew and passengers passports must be given to one of our staff representatives.
3. Passengers must walk inside the general aviation building to make the CIQ (Customs, Immigration and quarantine) processes. Luggage cannot be inspected without passenger's presence.
4. The whole procedure will take around 20-30 minutes.

Departure

1. Crew and passenger passports will be asked by one of our staff representatives to take them to immigration facilities.
2. The luggage will be taken inside the Xray machine for inspection.
3. The whole procedure will take around 20-30 minutes.

