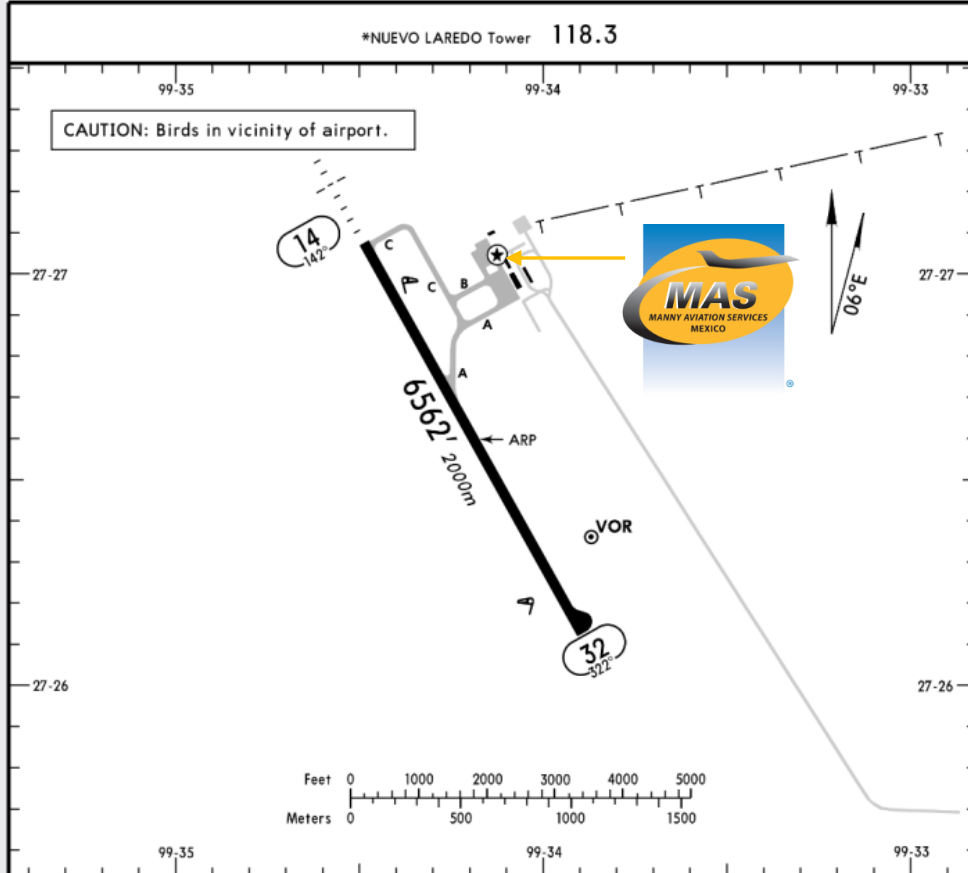




MMNL/NLD QUETZALCOATL INTERNATIONAL AIRPORT

MMNL/NLD
Apt Elev 484'
N27 26.6 W099 34.2

JEPPESEN NUEVO LAREDO, MEXICO
10 OCT 14 (10-9) Eff 16 Oct QUETZALCOATL INTL



Address:

Km. 5 Carretera a Piedras Negras
Apartado Postal 559, ZC. 88000.

Telephone: +52 (722) 273 0981.

Operational information:

Operational hours: Winter 1400-0200
UTC / Summer 1300-0100 UTC.

Customs and Immigration: During airport
operational hours.

Fuel available: Avgas 100/130, Jet A-1.

Fuel delays can be expected as the
government fuel provider has top priority
for commercial operations.

Fuel method of payment:

Credit card, debit card, Uvair-World Fuel
card or ASA release.

Fire Cat: V.

ADDITIONAL RUNWAY INFORMATION

RWY		USABLE LENGTHS		TAKE-OFF	WIDTH
		LANDING BEYOND Threshold	Glide Slope		
14	HIRL REIL SALS PAPI-L (angle 3.0°)				148'
32	HIRL REIL PAPI-L (angle 3.0°)				45m

	TAKE-OFF		FOR FILING AS ALTERNATE
	Rwy 14	Rwy 32	
1 & 2 Eng	300-1	300-1¼	A
3 & 4 Eng			B
			C
			D
			800-2



MMNL/NLD QUETZALCOATL INTERNATIONAL AIRPORT

Arrival

1. Upon arrival Aircraft has to follow ATC instructions for taxiing to the General Aviation Apron.
2. Crew and passenger passports will be asked by one of our staff representatives to take them to immigration facilities.
3. Passengers must walk inside the general aviation building to make the CIQ (Customs, Immigration and quarantine) processes. Luggage cannot be inspected without passenger's presence.
4. The whole procedure will take around 20-30 minutes.

Departure

1. Crew and passenger passports will be asked by one of our staff representatives to take them to immigration facilities.
2. The luggage will be taken inside the Xray machine for inspection.
3. The whole procedure will take around 20-30 minutes.

