



MMML/MXL GRAL. RODOLFO SÁNCHEZ TABOADA INTERNATIONAL AIRPORT

MMML/MXL
Apt Elev **74'**
N32 37.8 W115 14.5

JEPPESEN
27 JAN 17
Eff 2 Feb (13-1)

MEXICALI, MEXICO
GEN RODOLFO SANCHEZ TABOADA INTL

Address:

Carretera Mesa de Andrade Km 23.5 a Mexicali, Baja California Norte ZC. 21000.

Telephone: +52 (722) 273 0981.

Operational information:

Operational hours: Winter 1400-0900 UTC / summer: 1300-0800 UTC.

Customs and Immigration: During airport operational hours.

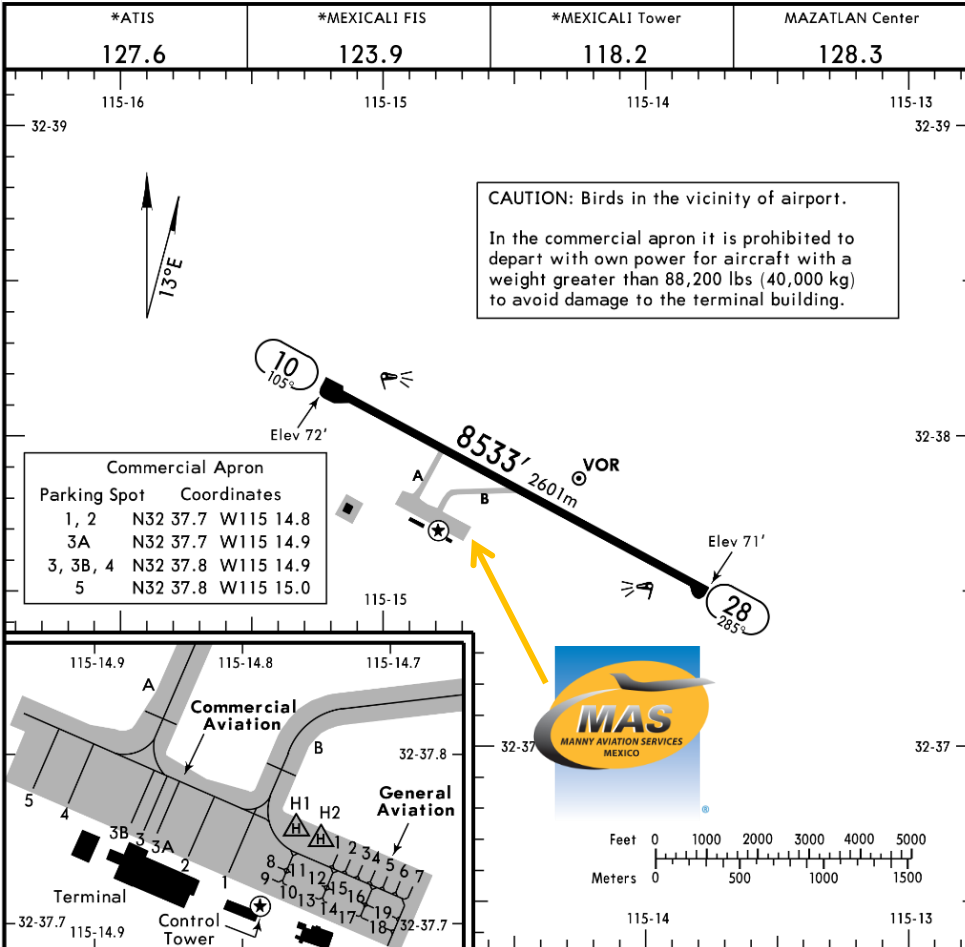
Fuel available: Avgas 100/130 & Jet A-1.

Fuel delays can be expected as the government fuel provider has top priority for commercial operations.

Fuel method of payment:

Credit card, debit card, Uvair-World Fuel card or ASA release.

Fire Cat: VII.



RWY	USABLE LENGTHS LANDING BEYOND	Threshold	Glide Slope	TAKE-OFF	WIDTH																					
						FOR FILING AS ALTERNATE																				
10 28	HIRL REIL PAPI-L (angle 3.0°)				148' 45m																					
<table border="1"> <thead> <tr> <th colspan="2">TAKE-OFF</th> <th colspan="2">FOR FILING AS ALTERNATE</th> </tr> <tr> <th colspan="2">All Rwys</th> <th colspan="2"></th> </tr> </thead> <tbody> <tr> <td>1 & 2 Eng</td> <td>600-2</td> <td>A</td> <td rowspan="4">800-2</td> </tr> <tr> <td>3 & 4 Eng</td> <td>300-1</td> <td>B</td> </tr> <tr> <td></td> <td></td> <td>C</td> </tr> <tr> <td></td> <td></td> <td>D</td> </tr> </tbody> </table>						TAKE-OFF		FOR FILING AS ALTERNATE		All Rwys				1 & 2 Eng	600-2	A	800-2	3 & 4 Eng	300-1	B			C			D
TAKE-OFF		FOR FILING AS ALTERNATE																								
All Rwys																										
1 & 2 Eng	600-2	A	800-2																							
3 & 4 Eng	300-1	B																								
		C																								
		D																								

MANNY AVIATION SERVICES



MMML/MXL GRAL. RODOLFO SÁNCHEZ TABOADA INTERNATIONAL AIRPORT

Arrival

1. Upon arrival aircraft has to follow ATC's instructions for taxiing to the General Aviation Apron.
2. Crew and passenger passports will be asked by one of our staff representatives to take them to immigration facilities.
3. Passengers must walk inside the general aviation building to make the CIQ (Customs, Immigration and quarantine) processes. Luggage cannot be inspected without passenger's presence.
4. The whole procedure will take around 10-15 minutes.

Departure

1. Crew and passenger passports will be asked by one of our staff representatives to take them to immigration facilities.
2. The whole process will take around 05-10 minutes.

