



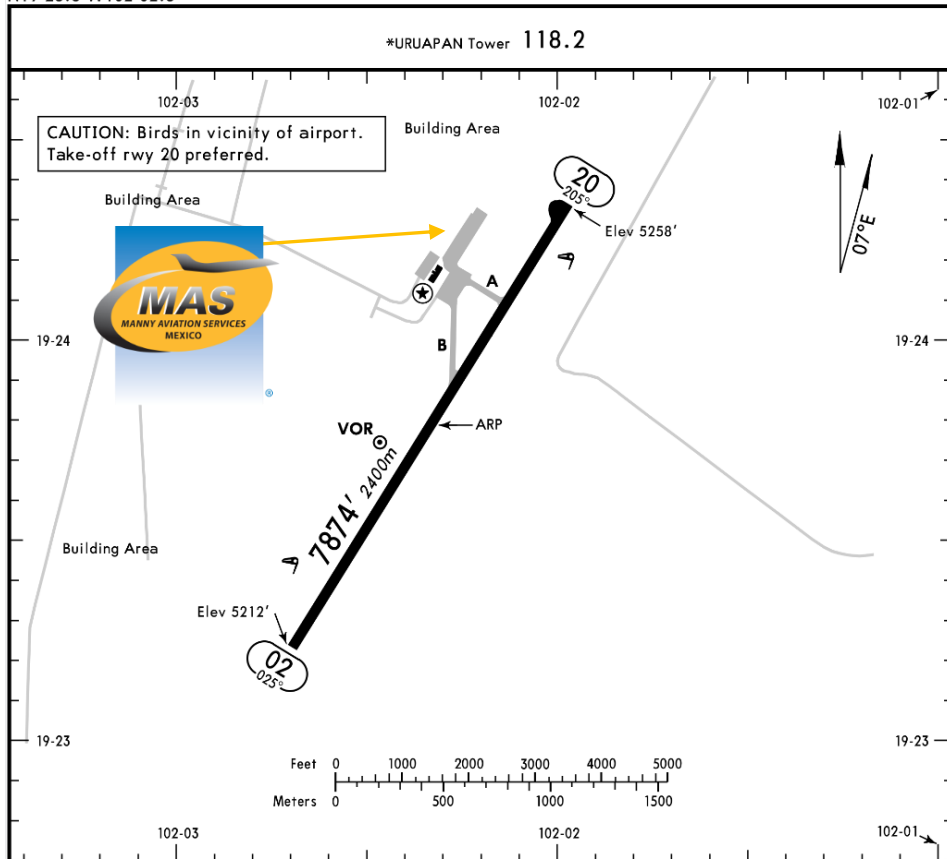
MMPN/UPN
GRAL. FRANCISCO MUJICA DOMESTIC AIRPORT

MMPN/UPN
Apt Elev 5258'
N19 23.8 W102 02.3

JEPPESEN
21 NOV 14 (13-1)

URUAPAN, MEXICO
GEN IGNACIO LOPEZ RAYON

Address:
Avenida Latinoamericana S/N,
Fraccionamiento San José Obrero,
Uruapan, Michoacán ZC. 60160.
Telephone: +52 (722) 273 0981.



Operational information:
Operational hours: Winter 1300-0100
/UTC Summer 1200-0000 UTC.

Customs and Immigration: Only on Thursday customs agents are at the airport.

Fuel available: Avgas 100/130, Jet A-1.

Fuel method of payment:

Credit card, debit card, Uvair-World Fuel card or ASA release.

Fire Cat: V.

ADDITIONAL RUNWAY INFORMATION

RWY		USABLE LENGTHS LANDING BEYOND			WIDTH
		Threshold	Glide Slope	TAKE-OFF	
02	MIRL REIL PAPI-L (angle 3.0°)				148'
20	MIRL REIL ① PAPI-L (angle 3.0°)				45m

① Usage restricted to 3.0 DME.

TAKE-OFF & DEPARTURE PROCEDURE

FOR FILING AS ALTERNATE

	Rwy 20		Rwy 02		DAY		NIGHT	
	DAY	NIGHT	DAY	NIGHT	A	B	C	D
1 & 2 Eng	500-1	VFR	NOT APPLICABLE		1500-5	NOT APPLICABLE		
3 & 4 Eng								

DEPARTURE PROCEDURE: Rwy 20, see 10-3 chart (CLIMB VOR DME UPN RWY 20). Rwy 02, VFR.
Departure MCAs: V-17 & UJ-65 to MLM 11000'; V-18 & UJ-18 to TLC 11000'; V-3 to ZIH 10000';

V-18 & UJ-18 to ZLO 13500'; V-3 & UJ-3-7 to GDL 12500'; UJ-3-7 to ACA 10000'.

MANNY AVIATION SERVICES



MMPN/UPN GRAL. FRANCISCO MUJICA DOMESTIC AIRPORT

Arrival

1. Upon arrival Crew must follow ATC's instructions to taxi into General Aviation Apron.
2. When passengers descend from AC, one representative of Federal Police will check AC and passengers' luggage.
3. The whole process will take around 10-15 minutes.

Departure

1. Crew and passengers arrive to General Aviation Terminal.
2. Our Agent will be waiting for Crew and passengers help them with baggage and coordinate all services for departure.
3. The whole process will take around 10-15 minutes.

