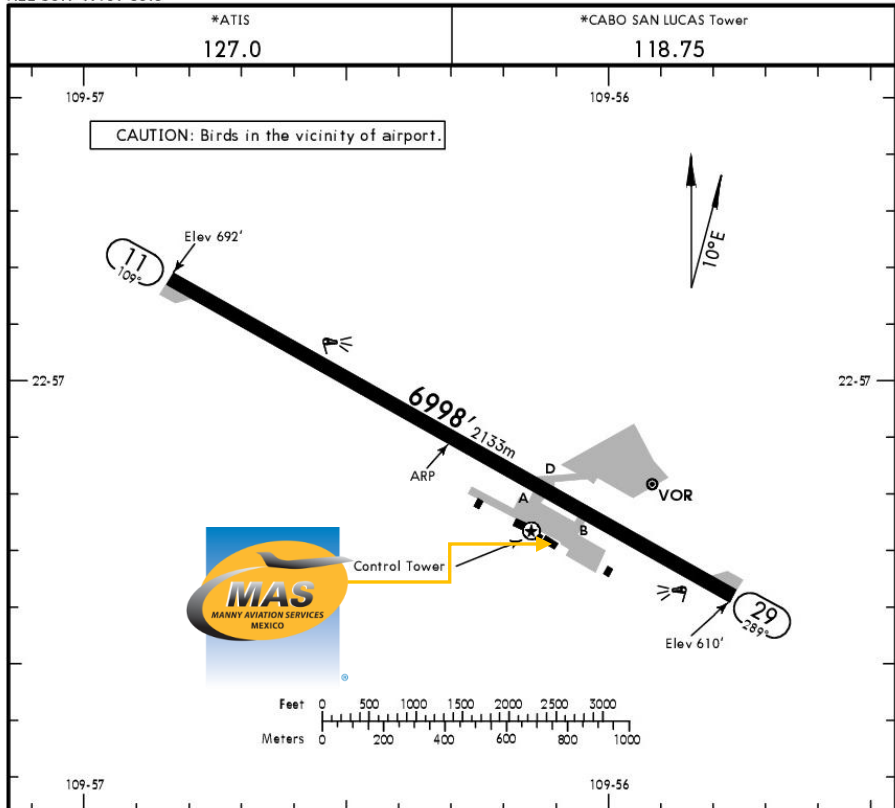




MMSL/CSL
CABO SAN LUCAS INTERNATIONAL AIRPORT

MMSL
Apt Elev 692'
N22 56.9 W109 56.3

JEPPESEN CABO SAN LUCAS, MEXICO
10 MAR 17 (10-9) CABO SAN LUCAS INTL



Address:

Prolongación Leona Vicario y Blvd
Aeropuerto S/N Col. Mesa Colorada III
Etapa, Cabo San Lucas B.C.S.
ZC. 23462.

Telephone: +52 (722) 273 0981.

Operational information:

Operational hours: Winter 1300-0300
UTC / Summer 1200-0200 UTC.

Customs and Immigration: During airport
operational hours.

ACSL FBO: During airport operational
hours.

Fuel available: Avgas 100/130 & Jet-A.

Fuel method of payment:

Credit card, debit card, Uvair-World Fuel
card or ASA release addressed to:
SENOR FUELS SA DE CV.

Fire Cat: VI.

**Catering service available prior 24 hrs
before your delivery time.**

ADDITIONAL RUNWAY INFORMATION

RWY		USABLE LENGTHS			WIDTH
		LANDING	BEYOND	TAKE-OFF	
		Threshold	Glide Slope		
11	HIRL ①PAPI-L (angle 3.5°)				148'
29	HIRL PAPI-L (angle 3.0°)				45m

① 5° to the south non-standard approach trajectory.

TAKE-OFF

	TAKE-OFF	
	Rwy 11	Rwy 29
	Day and Night	Day and Night
1 & 2 Eng	600-2	1000-2 1/2
3 & 4 Eng		

CHANGES: ATIS.

© JEPPESEN, 2008, 2017. ALL RIGHTS RESERVED.



MMSL/CSL CABO SAN LUCAS INTERNATIONAL AIRPORT

Arrival

1. Upon arrival aircraft have to follow ATC instructions for taxiing to ACSL FBO.
2. Inside the FBO will be Customs and Immigration facilities.
1. Passengers must walk inside the general aviation building to make the CIQ (Customs, Immigration and quarantine) processes. Luggage cannot be inspected without passenger's presence.
3. The whole process will take around 05-10 minutes

Departure

1. For departure the passenger and crew will arrive into the FBO and they will complete customs and immigration procedures inside the FBO.
2. After this process, the passenger will be cleared to board the aircraft.
3. The whole procedure will take around 10-15 minutes.

