

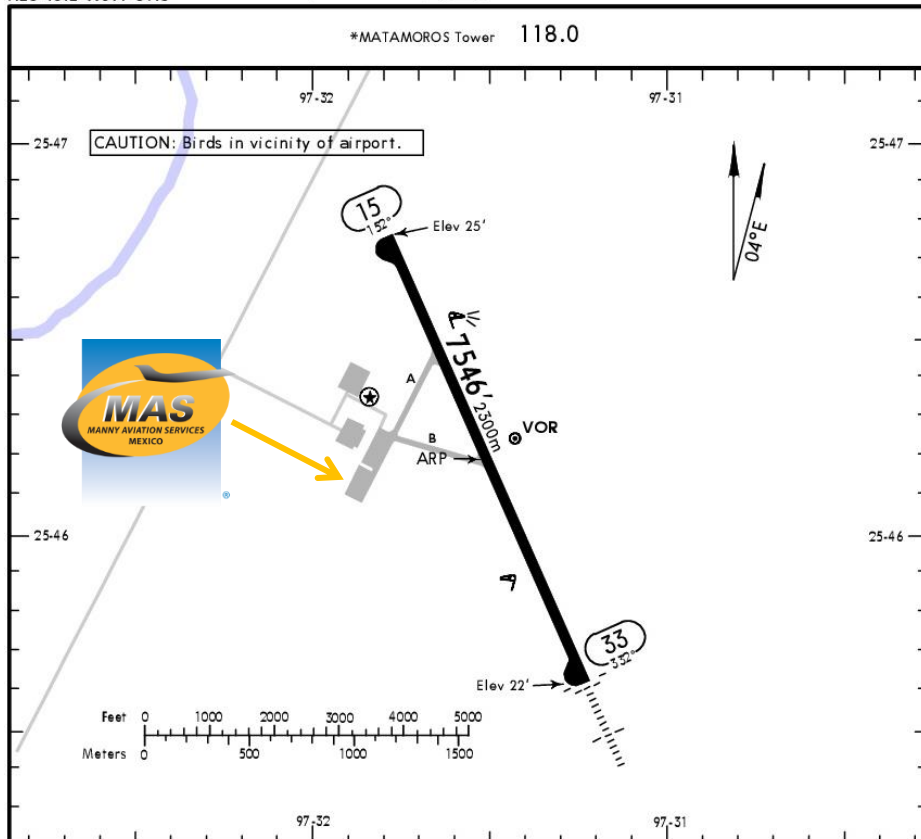


MMMA/MAM
 GRAL. SERVANDO CANALES INTERNATIONAL AIRPORT

MMMA/MAM
 Apt Elev 25'
 N25 46.2 W097 31.5



MATAMOROS, MEXICO
 GEN SERVANDO CANALES INTL



Address:

Carretera Matamoros – Cd. Victoria Km 9. Ejido El Galaneño. Matamoros, Tamaulipas. ZC. 87560.

Telephone: +52 (722) 273 0981.

Operational information:

Operational hours:

Winter 1400-0200 UTC
 Summer 1300-0100 UTC.

Customs and Immigration:

During airport operational hours. Customs is on call.

OVERTIME IS ONLY GRANTED FOR MEDEVACS

Fuel available:

Avgas 100/130 & Jet A.

Fuel delays can be expected as the government fuel provider has top priority for commercial operations.

Fuel method of payment:

Fuel release issued by your desired fuel vendor or credit, debit card.

AMEX IS NOT ACCEPTED

Manny's Representative: Mr. Rúben Escobedo García.

Catering Service: Available upon 24hrs request.

Fire Cat: VI.

ADDITIONAL RUNWAY INFORMATION

RWY	HIRL	REIL	PAPI-L		USABLE LENGTHS		TAKE-OFF	WIDTH
			(angle 3.0°)	(angle 3.0°)	Threshold	Glide Slope		
15	HIRL	REIL	PAPI-L	(angle 3.0°)				148'
33	HIRL	REIL	SALSF	PAPI-L	(angle 3.0°)			45m

TAKE-OFF & DEPARTURE PROCEDURE

FOR FILING AS ALTERNATE

TAKE-OFF & DEPARTURE PROCEDURE		FOR FILING AS ALTERNATE	
All Rwy's			
1 & 2 Eng	300-1	A	800-2
3 & 4 Eng	300-1/2	B	
		C	
		D	

For departure procedures and MCAs see Matamoros Departures 10-3 and 10-3A.

CHANGES: Rwy bearings, rwy elevations.

© JEPPESEN, 1999, 2017. ALL RIGHTS RESERVED.



MMMA/MAM
GRAL. SERVANDO CANALES INTERNATIONAL AIRPORT

Arrivals:

1. Upon the aircraft arrival crew must follow ATC instructions to make a 180° turn and taxi to the main Apron.
2. National Guard will make a quick inspection from the outside.
3. Crew and passenger's passports will be given to one of our staff representatives.
4. Passengers will descend and walk through the terminal to follow Customs and Immigration process; all bags, backpacks, handbags, briefcases, etc., must be taken inside to be inspected by customs and national guard, passengers must be with their luggage all the time.
5. The whole procedure will take around 20-30 minutes and then they may proceed to go outside the building to take their transportation.

Departures:

1. Crew and passenger passports will be asked by one of our staff representatives to take them to immigration facilities.
2. Passengers and Crew will go through Customs and Immigration and then they will board the aircraft.
3. The whole procedure will take around 20-30 minutes.

