



# MMEP/TPQ AMADO NERVO INTERNATIONAL AIRPORT

MMEP/TPQ  
Apt Elev 3020'  
N21 25.2 W104 50.6

JEPPESSEN  
16 JUN 17 (13-1) Eff 22 Jun

TEPIC, MEXICO  
TEPIC

**Address:**  
Domicilio conocido Apartado Postal 195,  
Pantanal, Tepic, Nayarit.  
**Telephone:** +52 (722) 273 0981.

**Operational Information**  
Operational hours: Winter 1300-0100  
UTC/ Summer 1200-0000 UTC.

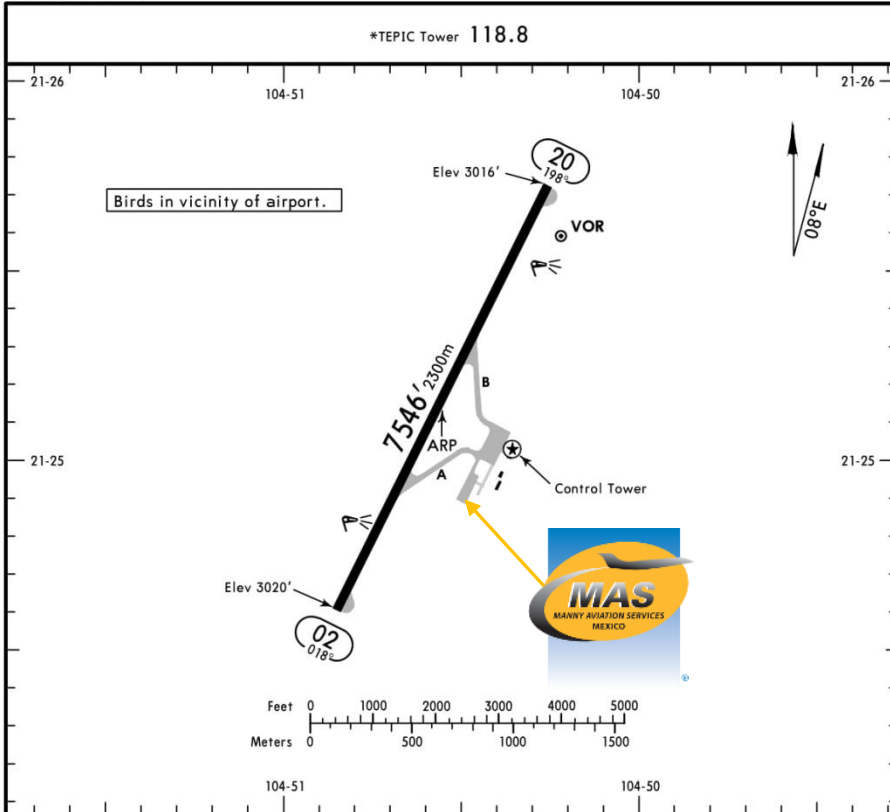
**Customs and immigration: Not available.**

Fuel available: Avgas 100/130, Jet A-1.

Fuel delays can be expected as the government fuel provider has top priority for commercial operations.

**Fuel method of payment:**  
Credit card or debit card.

**Fire Cat:** VI.



ADDITIONAL RUNWAY INFORMATION

RWY		USABLE LENGTHS		TAKE-OFF	WIDTH
		Threshold	Glide Slope		
02	MIRL REIL PAPI-L (angle 3.0°)				148' 45m
20					

TAKE-OFF & DEPARTURE PROCEDURE

	Rwy 02	Rwy 20
1 & 2 Eng	500-1	700-2
3 & 4 Eng		

For departure procedures and MCAs see  
Tepic Departures 10-3 and 10-3A.

CHANGES: Rwy 20 elevation.

© JEPPESSEN, 2003, 2017. ALL RIGHTS RESERVED.



## MMEP/TPQ AMADO NERVO INTERNATIONAL AIRPORT

### Arrival

1. Upon arrival Crew must follow ATC's instructions to taxi into General Aviation Apron.
2. When passengers descend from AC, one representative of Federal Police will check AC and passengers' luggage.
3. The whole process will take around 10-15 minutes.

### Departure

1. Crew and passengers arrive to General Aviation Terminal.
2. Our Agent will be waiting for Crew and passengers help them with baggage and coordinate all services for departure.
3. The whole process will take around 10-15 minutes.

