

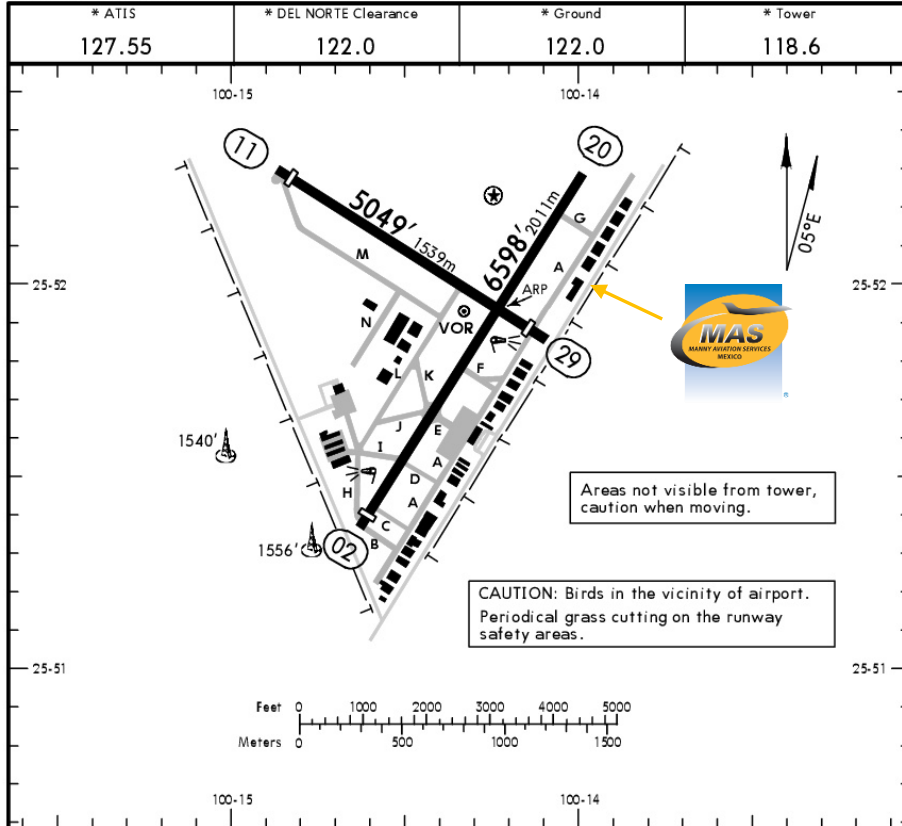


MMAN / NTR DEL NORTE INTERNATIONAL AIRPORT

MMAN/NTR
Apt Elev **1476'**
N25 51.9 W100 14.2

JEPPESEN
8 SEP 17 **21-1** **El 14 Sep**

MONTERREY, MEXICO
DEL NORTE INTL



RWY		USABLE LENGTHS		TAKE-OFF	WIDTH
		Threshold	Glide Slope		
02	MIRL PAPI-L (angle 3.0°)	6362' 1939m		6362' 1939m	148' 45m
20	MIRL PAPI-L (angle 3.2°)		5709' 1740m	6362' 1939m	148' 45m
11	PAPI-L (angle 3.0°)	4787' 1459m		4715' 1437m	148' 45m
29		4715' 1437m		4787' 1459m	148' 45m

		TAKE-OFF	
		Rwys 02, 20	Rwys 11, 29
		DAY	
1 & 2 Eng	300-1	VFR	
3 & 4 Eng	200-1/2		

CHANGES: Mag var. © JEPPESEN, 1999, 2017. ALL RIGHTS RESERVED.

Address:
Carretera México - Nuevo Laredo km
1006 Apodaca, Nuevo León.
ZC 66600.

Telephone: +52 (722) 273 0981

Operational information.

Operational hours:

Winter 1300-0600 UTC / Summer 1200-0500 UTC.

Customs and Immigration: Same as airport operational hours.

Fuel available: Avgas 100/130, Jet A.

Credit card, debit card or fuel orders through your preferred fuel vendor are accepted, orders must be addressed to

SOCIEDAD COOPERATIVA DE CONSUMO DE SERVICIOS AEREOS ADN SCL.

Fire cat: VI

Manny's Representatives: Julian Rodriguez and Carlos Merino.

Catering: Service available upon 24 hrs request., we recommend asking for local and typical regional food.

GSE: Available.

Rental car: Available, with or without driver.



MMAN / NTR DEL NORTE INTERNATIONAL AIRPORT

Arrivals:

1. Upon arrival aircraft must follow ATC instructions to taxi to General Aviation where Authorities facilities are located.
2. Crew and passenger passports will be asked by one of our staff representatives to take them to immigration facilities.
3. Passengers need to disembark at the general aviation terminal to follow customs and immigration procedures; they must walk inside the general aviation building to make the CIQ (Customs, Immigration and quarantine) processes. Luggage cannot be inspected without passenger's presence.
4. When the process is finished, aircraft will be towed to AZOR FBO, passengers and crew will be transported to the FBO by car.

Departures:

1. Crew and passenger passports will be asked by one of our staff representatives to take them to immigration facilities as well as their luggage.
2. Once the passengers arrive, they will board the aircraft and will be towed to customs and immigration, handbags & briefcases will also be taken to a review process by customs and federal police authorities.
3. This process will take about 5 minutes per passenger (it depends on the amount of luggage).

