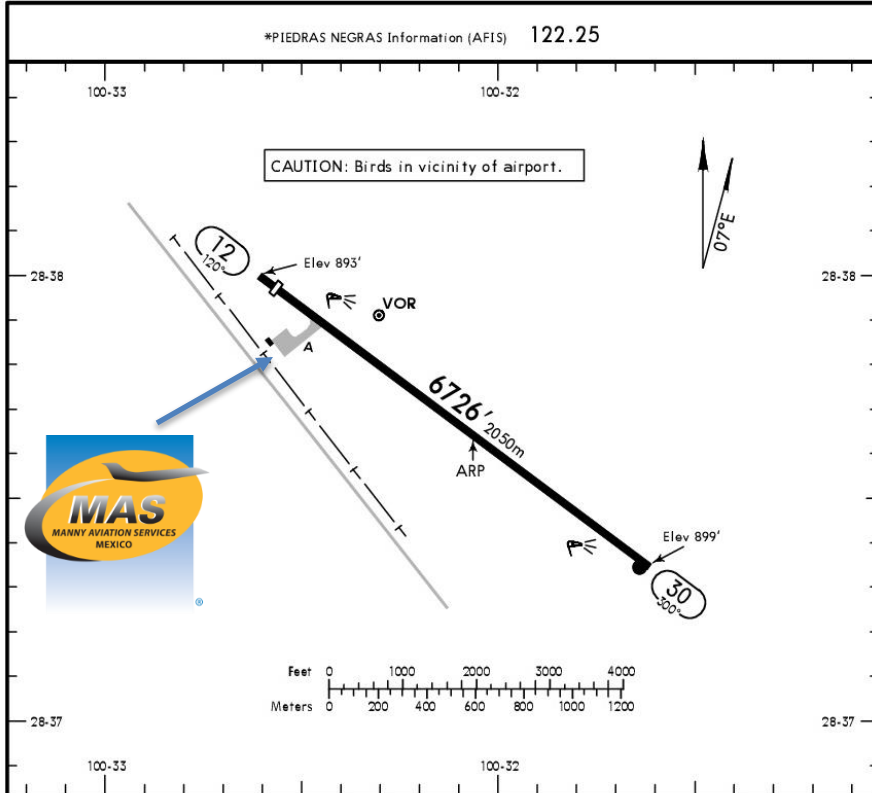




MMPG/PNG
PIEDRAS NEGRAS INTERNATIONAL AIRPORT

MMPG/PDS
Apt Elev 901'
N28 37.6 W100 32.1

JEPPESSEN PIEDRAS NEGRAS, MEXICO
30 JUN 17 (13-1) PIEDRAS NEGRAS INTL



ADDITIONAL RUNWAY INFORMATION

RWY	HIRL	REIL	PAPI-L (angle 3.0°)	USABLE LENGTHS		TAKE-OFF	WIDTH
				Threshold	Landing Beyond		
12	HIRL	REIL	PAPI-L (angle 3.0°)	6398'	1950m		105'
30	HIRL	REIL	APAPI-L (angle 3.0°)				32m

TAKE-OFF	
All Rwy's	
1 & 2 Eng	500-1
3 & 4 Eng	500-1/2

For departure procedure and MCAs see 10-3 and 10-3A.

CHANGES: Runway bearings, rwy elevations, usable length, lighting. © JEPPESSEN, 1999, 2017. ALL RIGHTS RESERVED.

Address:
Carretera Piedras Negras – Nuevo Laredo Km. 3.5 Piedras Negras Coahuila.

Telephone: +52 (722) 273 0981.

Operational information:

Operational hours: Winter 1300-0100 UTC / Summer 1200-0000 UTC.

Customs and Immigration: On call but they work during airport operational hours.

Manny's Representatives: Elko Disan Betancourt & Victor Manuel Betancourt.

Overtime: May be arranged 2 hours prior airport closure and can be extended until the desired time.

Fuel available: Avgas 100/130 (No fuel truck) & Jet A.

Fuel truck is owned by the airport and delays may be expected as they have top priority for commercial operations.

Fuel price: Around 4 USD per USG (Price may change due exchange rate).

Fuel method of payment: Credit card (except AMEX), debit card, Uvair-World Fuel card or ASA release addressed to: **SERVICIOS ESTATALES AEROPORTUARIOS.**

Catering: Simple orders may be arranged with 48 hours in advance such as finger sandwiches and cheese & cold cuts trays, etc. International arrivals with catering onboard can keep the food if the operation is a quick turn.

Fire Cat: IV.

Airport security: National Guard, private security, and Mexican Army personnel.



MMPG/PNG PIEDRAS NEGRAS INTERNATIONAL AIRPORT

Arrivals:

1. Upon arrival, aircraft needs to follow ATC commands to taxi to the General Aviation Apron.
2. Mexican Army will make a quick revision and our staff will give the whole information required to them.
3. Crew and passenger passports must be collected by one of our staff representatives so they can take them to the General aviation facilities where immigration is.
4. Passengers must walk inside the general aviation building to make the CIQ (Customs, Immigration and quarantine) processes. Luggage cannot be inspected without passenger's presence.
5. The whole procedure will take around 15-20 minutes, depending on how many passengers arrive.
6. Transportation will be outside of the GAT ready to meet the passengers or aircrew.

Departures:

1. Crew and passenger passports must be collected by one of our staff representatives so they can take them to the General aviation facilities where immigration is.
2. Passengers and crew must have a quick inspection from customs and then they may proceed to board the aircraft.
3. The whole procedure will take around 15-20 minutes, depending on how many passengers depart.
4. Our team will help to make a smooth process.

