

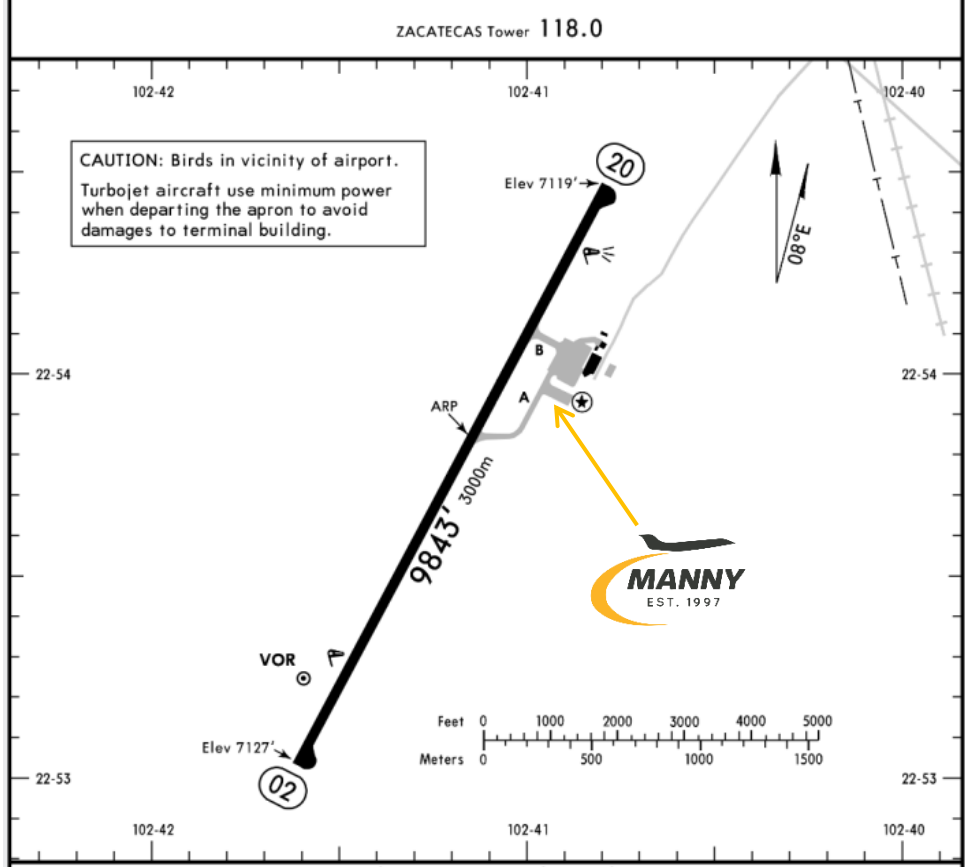


MMZC/ZCL
 GRAL. LEOBARDO C. RUIZ INTERNATIONAL AIRPORT

MMZC/ZCL
 Apt Elev 7141'
 N22 53.8 W102 41.1

JEPPESSEN
 15 JAN 16 (13-1)

ZACATECAS, MEXICO
 GEN LEOBARDO C RUIZ INTL



Address:

Carretera Panamericana S / N Km 23
 Tramo Zacatecas – Fresnillo Calera de
 V.R., Zacatecas ZC. 86280.

Telephone: +52 (722) 273 0981.

Operational information:

Operational hours: 24 hrs.

Customs and Immigration: 24 hrs.

Fuel available: Avgas 100/130 & Jet A.

Fuel delays can be expected as the government fuel provider has top priority for commercial operations.

Fuel method of payment:
 Credit card, debit card,

Manny's Representative: Roberto Mejía Villagrana

GSE: Available

Catering: Available, with a 24 hrs. request.

Fire Cat: VI.

RWY	USABLE LENGTHS	LANDING BEYOND		TAKE-OFF	WIDTH
		Threshold	Glide Slope		
02 20	HIRL REIL PAPI-L (angle 3.0°)				148' 45m

TAKE-OFF		FOR FILING AS ALTERNATE	
All Rwys			
1 & 2 Eng	500-1	A	800-2
		B	
		C	
		D	
3 & 4 Eng	300-1		

Arrivals:

1. Upon arrival aircraft has to follow ATC's instructions for taxiing to the general aviation platform.
2. Crew and passenger passports will be asked by one of our staff representatives to take them to immigration facilities.
3. When all passengers deplane, Customs and Immigration agents will come onboard to make a quick inspection, personnel from National Guard will make other inspections outside the aircraft.
4. Passengers must walk inside the general aviation building to make the CIQ (Customs, Immigration and quarantine) processes. Luggage cannot be inspected without passenger's presence.
5. The whole procedure will take around 20-30 minutes.

Departures:

1. Crew and passenger passports will be asked by one of our staff representatives to take them to immigration facilities.
2. The luggage will be taken inside the Xray machine for inspection.
3. The whole procedure will take around 20-30 minutes.

