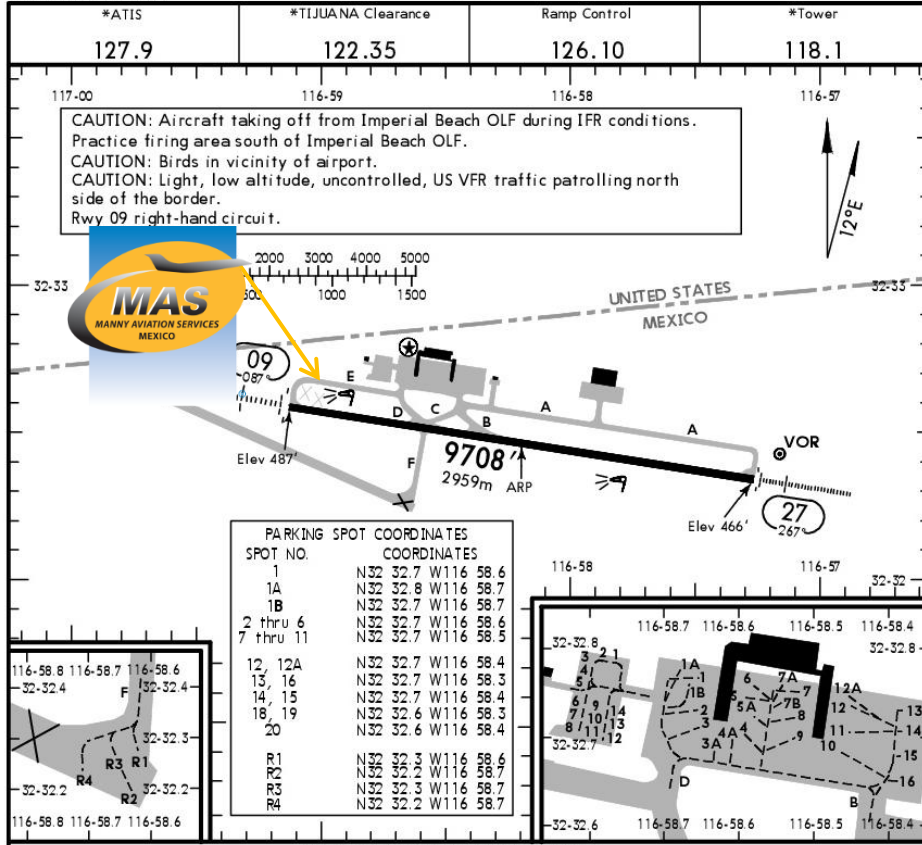




MMTJ/TIJ GRAL. ABELARDO RODRIGUEZ INTERNATIONAL AIRPORT

MMTJ/TIJ
Apt Elev **487'**
N32 32.5 W116 58.2

JEPPESEN **TIJUANA, MEXICO**
12 JAN 18 (10-9) GEN ABELARDO L RODRIGUEZ INTL



Address:
Carretera al Aeropuerto S / N Col.
Nueva Tijuana ZC. 22435
Telephone: +52 (722) 273 0981

Operational information:
Operational hours: 24 hrs.
Customs and Immigration: 24 hrs.
Fuel available: Avgas 100/130 & Jet A-1.

Fuel delays can be expected as the government fuel provider has top priority for commercial operations.

Fuel method of payment:
Credit card, debit card, cash, Uvaair-World Fuel card or ASA release.

AMEX is not accepted.

Fire Cat: IX

RWY	ADDITIONAL RUNWAY INFORMATION		USABLE LENGTHS		TAKE-OFF	WIDTH
	HIRL	SALS	Threshold	Glide Slope		
09	HIRL	SALS PAPI-L (angle 3.0°)		7980' (2432m)		148'
27	HIRL	ALS PAPI-L (angle 3.0°)				45m

1 PAPI usage restricted to 4.5 NM because it doesn't clear obstructions beyond that distance.

TAKE-OFF & DEPARTURE PROCEDURE				FOR FILING AS ALTERNATE			
Rwy 27		Rwy 09		Precision	Non-Precision		
SCHEDULED AIR CARRIER ONLY If meteorological conditions are below landing minimums an alternate is required before take-off. The pilot in command must report 14 longitudinal runway lights in the direction of take-off as a minimum for visibility of the high intensity runway lights. This system should be operative and the runway should have centerline markings. If there are differences between the reported values by the equipment and what the pilot reports, it will be taken as valid those counted by the pilot.							
2 Eng	1/4	1 & 2 Eng	200-1/2	1600-2	A	600-2	1600-3
3 & 4 Eng		3 & 4 Eng			B C D		

For departure procedures and MCAs see SID's.

CHANGES: Ramp control added, parking spots revised. © JEPPESEN, 2001, 2018. ALL RIGHTS RESERVED.



MMTJ/TIJ GRAL. ABELARDO RODRIGUEZ INTERNATIONAL AIRPORT

Arrival

1. Upon arrival aircraft has to follow ATC instructions for taxiing to the General Aviation or Commercial platform; it will depend on the ACFT size.
2. Crew and passenger passports will be asked by one of our staff representatives to take them to immigration facilities.
3. Passengers must walk inside the general aviation building to make the CIQ (Customs, Immigration and quarantine) processes. Luggage cannot be inspected without passenger's presence.
4. The whole procedure will take around 20-30 minutes.

Departure

1. Crew and passenger passports will be asked by one of our staff representatives to take them to immigration facilities.
2. The luggage will be taken inside the Xray machine for inspection.
3. The whole procedure will take around 20-30 minutes.

