

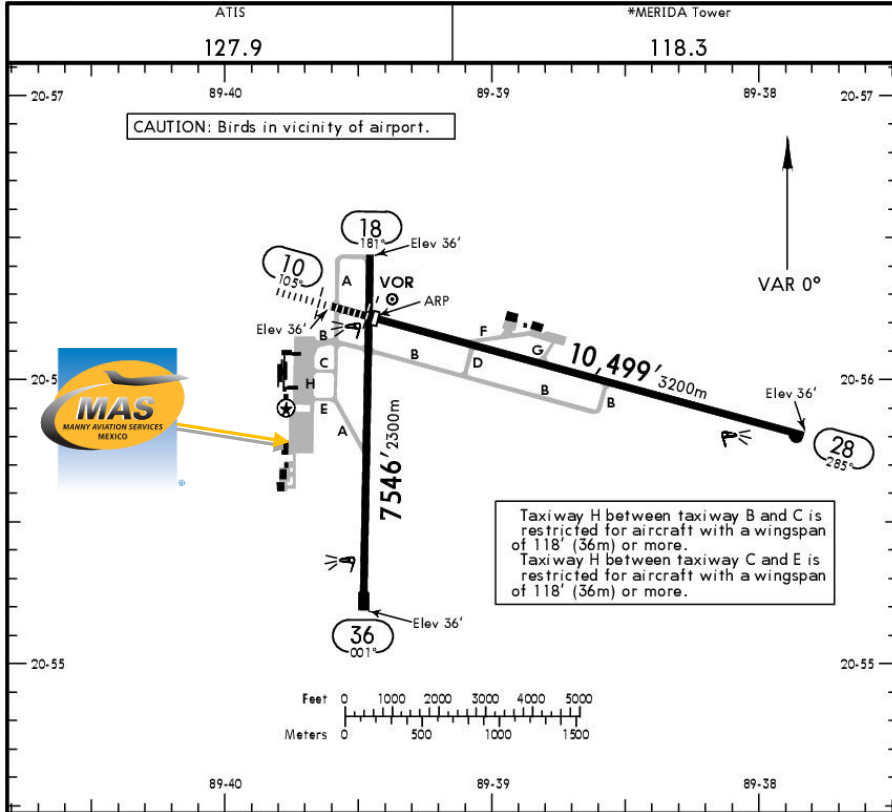


MMMD/MID
 LIC. MANUEL CRECENCIO REJÓN INTERNATIONAL
 AIRPORT

MMMD/MID
 Apt Elev 38'
 N20 56.2 W089 39.5

JEPPESEN
 12 JAN 18 (10-9)

MERIDA, MEXICO
 MERIDA INTL



ADDITIONAL RUNWAY INFORMATION

RWY	HIRL ALSF-I PAPI-L (angle 3.0°)	USABLE LENGTHS		TAKE-OFF	WIDTH
		Threshold	Glide Slope		
10	HIRL ALSF-I PAPI-L (angle 3.0°)	9449' 2880m	8326' 2538m		151' 46m
28	HIRL PAPI-L (angle 3.0°)				
18	HIRL PAPI-L (angle 3.0°)				148' 45m
36	HIRL PAPI-L (angle 3.0°)				

	TAKE-OFF		FOR FILING AS ALTERNATE	
	Rwys 10, 18, 28	Rwy 36	Precision	Non-Precision
1 & 2 Eng	300-1	500-1	A B C D	800-2
3 & 4 Eng	200-1/2		600-2	

For departure procedure and MCAs see SIDs.

CHANGES: Notes, usable lengths, magnetic variation. © JEPPESEN, 2001, 2018. ALL RIGHTS RESERVED.

Address:
 Carretera Mérida-Umán km 4.5, Mérida,
 Yucatán. ZC. 97291.
Telephone: +52 (722) 273 0981.

Operational information:
 Operational hours: 24 hrs.
 Customs and Immigration: 24 hrs.
 Fuel available: Avgas 100/130 & Jet A-1.

Fuel delays can be expected as the government fuel provider has top priority for commercial operations.

Manny's Representative: Leonardo Francisco Jaime Munguia.

Fuel method of payment:
 Credit card, debit card, Uvair-World Fuel card or ASA release.

Fire Cat: VII.

RMK: CURRENTLY, WE HAVE SPACE IN HANGAR #4 WITH THE CAPACITY UP TO ONE F2TH, IT IS NECESSARY TO REQUEST IT PRIOR TO ARRIVAL, DUE IT IS UNDER AVAILABILITY.



MMMD/MID LIC. MANUEL CRECENCIO REJÓN INTERNATIONAL AIRPORT

Arrival

1. Upon arrival aircraft has to follow ATC's instructions for taxiing to the General Aviation Apron.
2. Crew and passenger passports will be asked by one of our staff representatives to take them to immigration facilities.
3. When all passengers deplane, Customs and Immigration agents will come onboard to make a quick inspection, personnel from SEDENA and National Guard will make other inspections outside the aircraft.
4. Passengers must walk inside the general aviation building to make the CIQ (Customs, Immigration and quarantine) processes. Luggage cannot be inspected without passenger's presence.
5. The whole procedure will take around 20-30 minutes.

Departure

1. Crew and passenger passports will be asked by one of our staff representatives to take them to immigration facilities.
2. The luggage will be taken inside the Xray machine for inspection.
3. The whole procedure will take around 20-30 minutes.



MANNY AVIATION SERVICES

T +52 (722) 273 09 81 · F +52 (722) 273 11 14 - 273 34 59 · US & Can Toll Free 1 877 50 MANNY ops@mannyaviation.com customer.service@mannyaviation.com