



MMUN/ CUN CANCUN INTERNATIONAL AIRPORT

MMUN/CUN

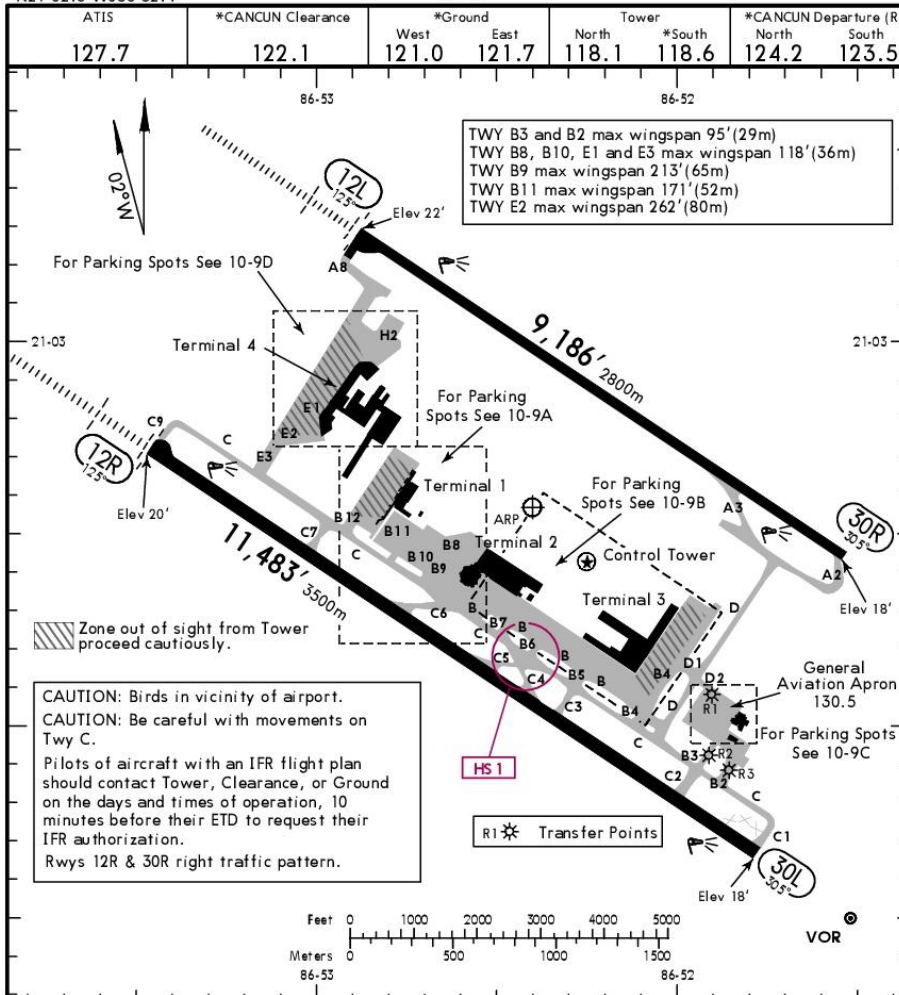
Apt Elev 22'
N21 02.6 W086 52.4

JEPPESSEN

9 MAR 18 (10-9)

CANCUN, MEXICO

CANCUN INTL



Address:

Carretera Cancun-Chetumal Km. 22
Cancun Quintana Roo, Mexico,
ZC. 77500.

Telephone: +52 (722) 273 0981.

Operational information:

Operational hours: 24 hrs
Customs and Immigration: 24 hrs
ASUR FBO: 24 hrs.
Fuel available: Avgas 100/130 & Jet A-1.

Fuel delays can be expected as the government fuel provider has top priority for commercial operations.

Fuel method of payment:

Credit card, debit card, Uvair-World Fuel card or ASA release

Fire Cat: IX

Catering service available with prior 24 hrs before your delivery time.

ADDITIONAL RUNWAY INFORMATION

RWY	HIRL REIL ALSF PAPI-L (angle 3.0°)	USABLE LENGTHS			WIDTH
		Threshold	Glide Slope	TAKE-OFF	
12R 30L	HIRL REIL PAPI-L (angle 3.0°)		10,460' 3188m		197' 60m
12L 30R	HIRL REIL ALSF PAPI-L (angle 3.0°)		8037' 2450m		148' 45m

HOT SPOTS

HS1 Aircraft landing on Runway 12R/30L must vacate the runway completely, crossing the holding points of the runway until taxiway C.

	TAKE-OFF	FOR FILING AS ALTERNATE	
		Precision	Non-Precision
1 & 2 Eng	3/4	600-2	800-2
3 & 4 Eng	1/2		

CHANGES: Parking insets.

© JEPPESSEN, 1999, 2018. ALL RIGHTS RESERVED.



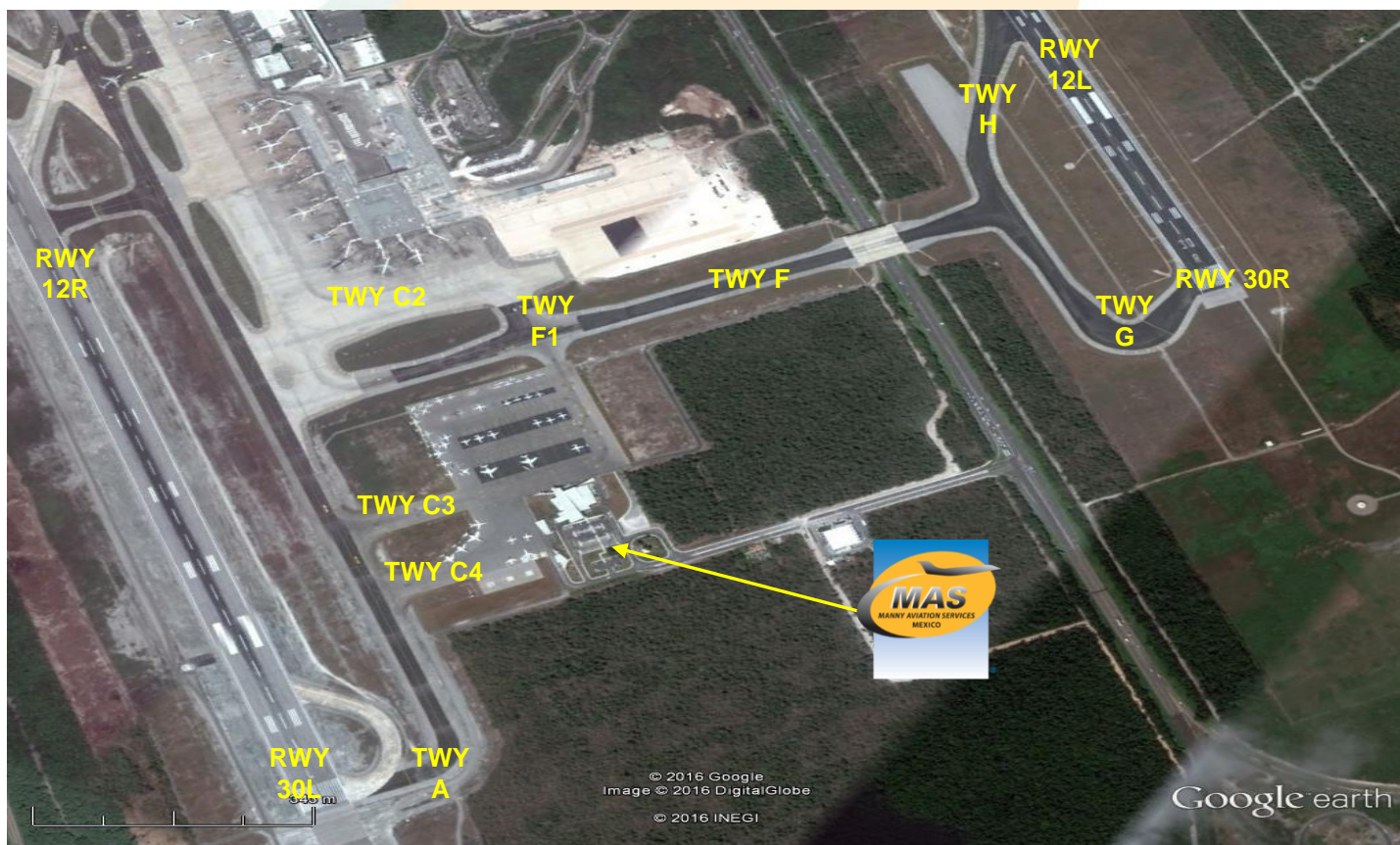
MMUN/ CUN CANCUN INTERNATIONAL AIRPORT

Llegada

1. Expect ground control instructions for taxiing to ASUR FBO, which is located on F1 coming from F (Foxtrot) taxiway, or C3 & C4, coming from A (Alfa) taxiway.
2. Immigrations/customs forms will be already pre-filled and crew & passengers only have to sign them.
3. Our team will have to offload the entire luggage, please keep in mind there will be an inspection performed inside the FBO.
4. When all passengers deplane, Customs and Immigration agents will come onboard to make a quick inspection, personnel from SEDENA and National Guard will make other inspections outside the aircraft.
5. Passengers must walk inside the general aviation building to make the CIQ (Customs, Immigration and quarantine) processes. Luggage cannot be inspected without passenger's presence.
6. The whole procedure will take around 15-20 minutes.

Salida

1. Once the crew and passengers arrive at the FBO one of our staff representatives will ask for his passports and luggage, then passports will be taken to immigration to be stamped and authorized for the departure.
2. Customs pre-filled forms will be handed to both; crew and passengers and they only have to sign.
3. Once the immigration process is done, our staff representatives will take the luggage to customs for the inspection; once this is completed the passengers may walk through the metal detector and proceed to board the aircraft.
4. The aircraft will be already at the departure spot without need to be towed.
5. The whole procedure will take around 15-20 minutes.



MANNY AVIATION SERVICES

T +52 (722) 273 09 81 · F +52 (722) 273 11 14 - 273 34 59 · US & Can Toll Free 1 877 50 MANNY ops@mannyaviation.com customer.service@mannyaviation.com