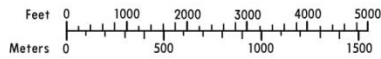
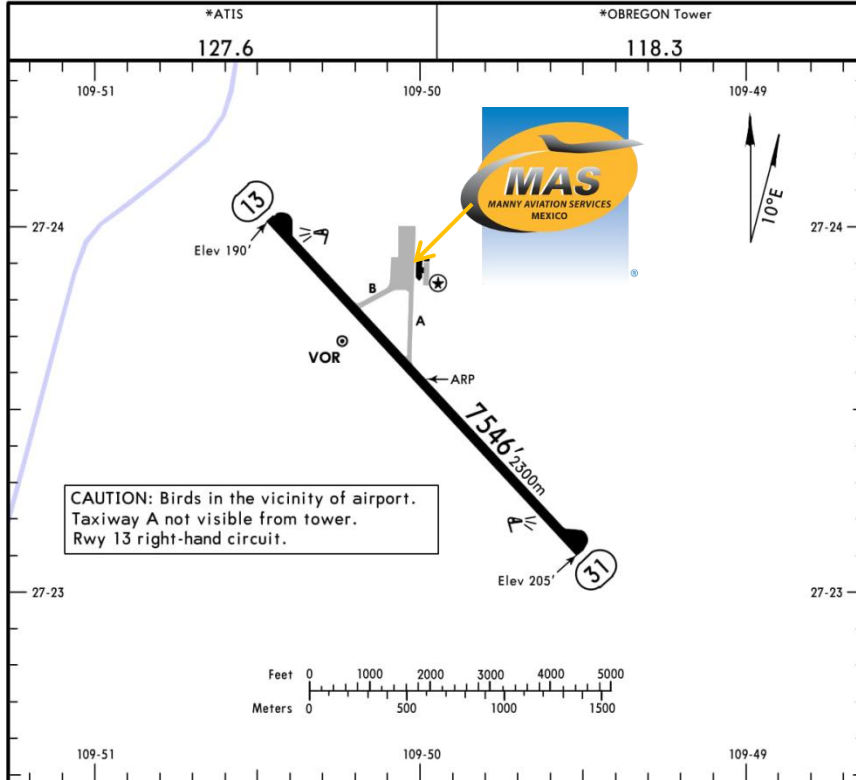




MMCN / CEN CIUDAD OBREGON INTERNATIONAL AIRPORT

MMCN/CEN
Apt Elev 205'
N27 23.6 W109 50.0

JEPPESEN CIUDAD OBREGON, MEXICO
16 JUN 17 (13-1) Eff 22 Jun CIUDAD OBREGON INTL



ADDITIONAL RUNWAY INFORMATION

RWY	HIRL	PAPI-L (angle 3.0°)	USABLE LENGTHS		TAKE-OFF	WIDTH
			Threshold	Glide Slope		
13 31						148' 45m

	TAKE-OFF	FOR FILING AS ALTERNATE
	All Rwys	
1 & 2 Eng	400-1	A B C D 800-2
3 & 4 Eng	300-1/2	

For departure procedures and MCA's see Ciudad Obregon Departures 10-3 and 10-3A.

CHANGES: Runway 13 end elevation.

© JEPPESEN, 2002, 2017. ALL RIGHTS RESERVED.

Address:

KM 1840 Carretera Internacional
Municipio de Cajeme Ciudad Obregón,
Sonora ZC. 85000

Telephone: +52 (722) 273 0981

Operational Information

Operational hours: 1300-0100 UTC
Customs and Immigration: During airport
operational hours.

Fuel available: Avgas 100/130, Jet A-1

Fuel delays can be expected as the
government fuel provider has top priority
for commercial operations.

Fuel method of payment:

Credit card, debit card, Uvair-World Fuel
card or ASA release.

Fire Cat: VI



MMCN / CEN CIUDAD OBREGON INTERNATIONAL AIRPORT

Arrival

1. Upon arrival, crew must follow ATC instructions for taxiing to General Aviation Apron.
2. Crew and passenger passports will be asked by one of our staff representatives to take them to immigration facilities.
3. When all passengers deplane, Customs agents will come onboard to make a quick inspection inside the aircraft.
4. Passengers must walk inside the general aviation building to make the CIQ (Customs, Immigration and quarantine) processes. Luggage cannot be inspected without passenger's presence.
5. The whole process will take around 15-20 minutes.

Departure

1. Crew and passenger passports will be asked by one of our staff representatives to take them to immigration facilities as well as their luggage.
2. The luggage will be inspected by dogs from Customs.
3. The whole process will take around 15-20 minutes.

