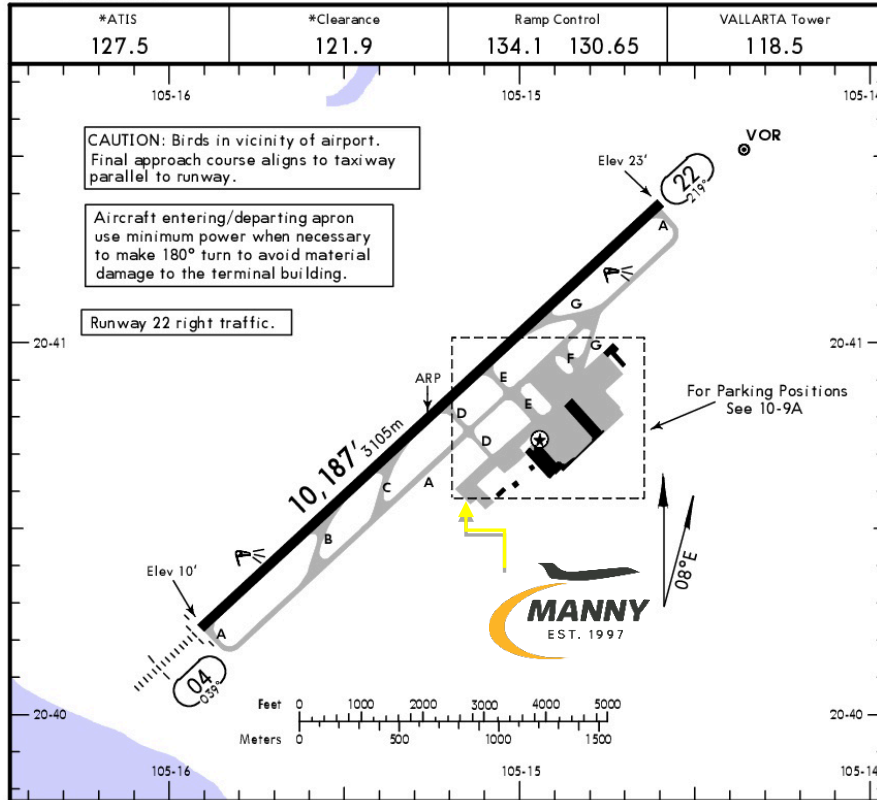




MMPR/PVR  
LIC. GUSTAVO DIAZ ORDAZ INTERNATIONAL AIRPORT

MMPR/PVR  
Apt Elev 23'  
N20 40.8 W105 15.3

JEPPESEN PUERTO VALLARTA, MEXICO  
22 SEP 17 (10-9) LIC GUSTAVO DIAZ ORDAZ INTL



RWY	ADDITIONAL RUNWAY INFORMATION				USABLE LENGTHS		TAKE-OFF	WIDTH
	HIRL	SALSF	REIL	PAPI-L (angle 3.0°)	Threshold	Glide Slope		
04								148' 45m
22								
TAKE-OFF							FOR FILING AS ALTERNATE	
	Rwy 22			Rwy 04				
1 & 2 Eng	300-1			500-1			A	800-2
3 & 4 Eng	300-1/2						B	
							C	
							D	

CHANGES: None. © JEPPESEN, 2000, 2016. ALL RIGHTS RESERVED.

**Address:**

Carretera a Tepic Km. 7.5, Puerto Vallarta, Jalisco, ZC. 48311.

**Telephone:** +52 (722) 273 0981.

**Operational information:**

**Operational hours:** 24 hrs.

**Customs and immigration:** 24 hrs.

**FBO AEROTRON:**

Winter 1300-0400  
UTC / Summer 1200-0300 UTC.

**Fuel available:**

Avgas 100/130 & Jet A-1.

**Bear in mind Aerotron FBO is the only authorized FBO at MMGL to attend executive aviation.**

**Fuel method of payment:**

Credit card, debit card, Uvair-World Fuel card or ASA release addressed to **AEROTRON/TRON**

**Fire Cat:** IX

**Catering service available prior 24 hrs before your delivery time.**

### Arrival

1. Upon arrival ATC will ask for the FBO NAME, then crew will receive instructions to taxi to AEROTRON FBO.
2. Inside the FBO will be Customs and Immigration facilities.
3. Passengers must walk inside the general aviation building to make the CIQ (Customs, Immigration and quarantine) processes. Luggage cannot be inspected without passenger's presence.
4. The whole process will take around 10-15 minutes.

### Departure

1. For departure the passenger and crew will arrive into the FBO and they will complete customs and immigration procedures inside the FBO.
2. After this process, the passenger will be cleared to board the aircraft.
3. The whole procedure will take around 20-30 minutes.

