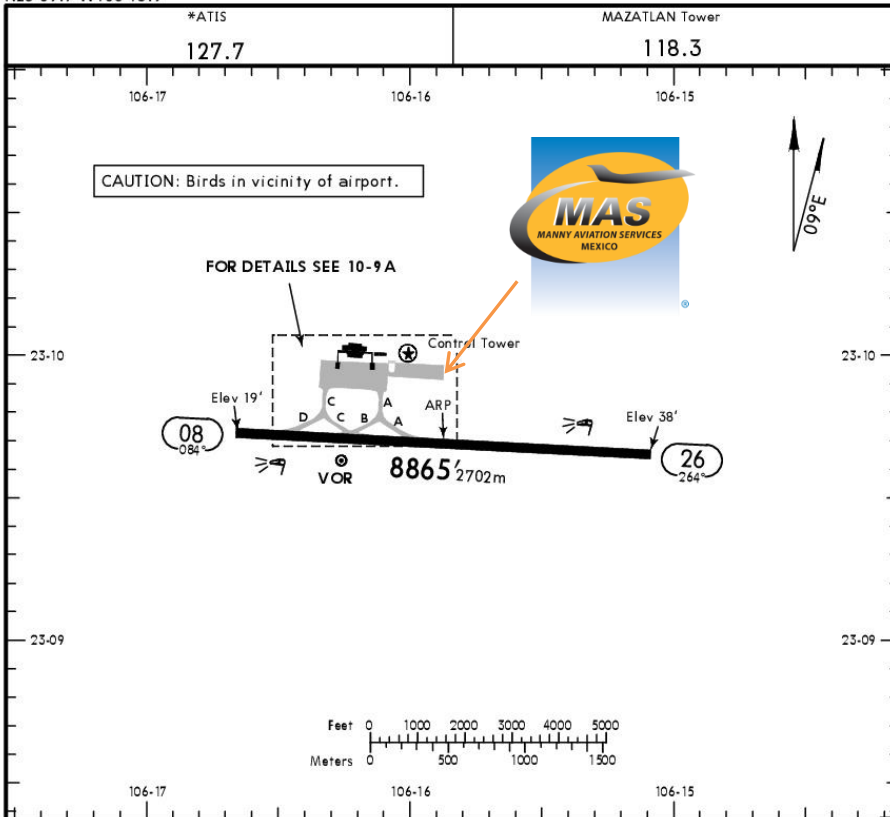




MMMZ / MZT
 GRAL. RAFAEL BUELNA INTERNATIONAL AIRPORT

MMMZ/MZT
 Apt Elev 38'
 N23 09.7 W106 15.9

JEPPESEN MAZATLAN, MEXICO
 3 NOV 17 (10-9) E11 9 Nov GEN RAFAEL BUELNA INTL



Address:

Carretera Internacional al Sur s/n
 Mazatlán, Sinaloa. ZC. 82000.

Telephone:

+52 (722) 273 0981.

Operational information:

Operational hours: 24/7.

Customs and Immigration: 24/7.

Fuel: Avgas 100/130, Jet A.

Fuel delays can be expected as the government fuel provider has top priority for commercial operations.

Fuel method of payment:

Credit card, debit card, AMEX or fuel vendors (WFS, AEG, etc).

Manny's Representative: Héctor Heliodoro Valdez Valle

Catering: Requests can be fulfilled with 24hrs in advance.

Fire Cat: VII.

RWY	HIRL REIL PAPI-L (angle 3.0°)	USABLE LENGTHS			WIDTH
		Threshold	Glide Slope	TAKE-OFF	
08 26					197' 60m
TAKE-OFF				FOR FILING AS ALTERNATE	
All Rwy's					
1 & 2 Eng	400-1	Precision		Non-Precision	
3 & 4 Eng	300-¾	600-2		800-2	
		A			
		B			
		C			
		D			

CHANGES: None.

© JEPPESEN, 1999, 2017. ALL RIGHTS RESERVED.



MMMZ / MZT GRAL. RAFAEL BUELNA INTERNATIONAL AIRPORT

Arrivals

1. Upon arrival the aircraft must follow ATC instructions for taxiing to the general aviation platform located to the right of taxiway Alfa.
2. Crew and passengers' passports will be taken by one of our representatives.
3. Passengers must walk inside the general aviation building to make the CIQ (Customs, Immigration, and quarantine) process. Luggage cannot be inspected without passenger's presence.
4. The whole procedure will take around 15-20 minutes.

Departures

1. Our staff will ask for crew and passenger passports as well as their luggage.
2. The luggage will be taken inside the Xray machine for inspection.
3. The whole procedure will take around 20-30 minutes.

