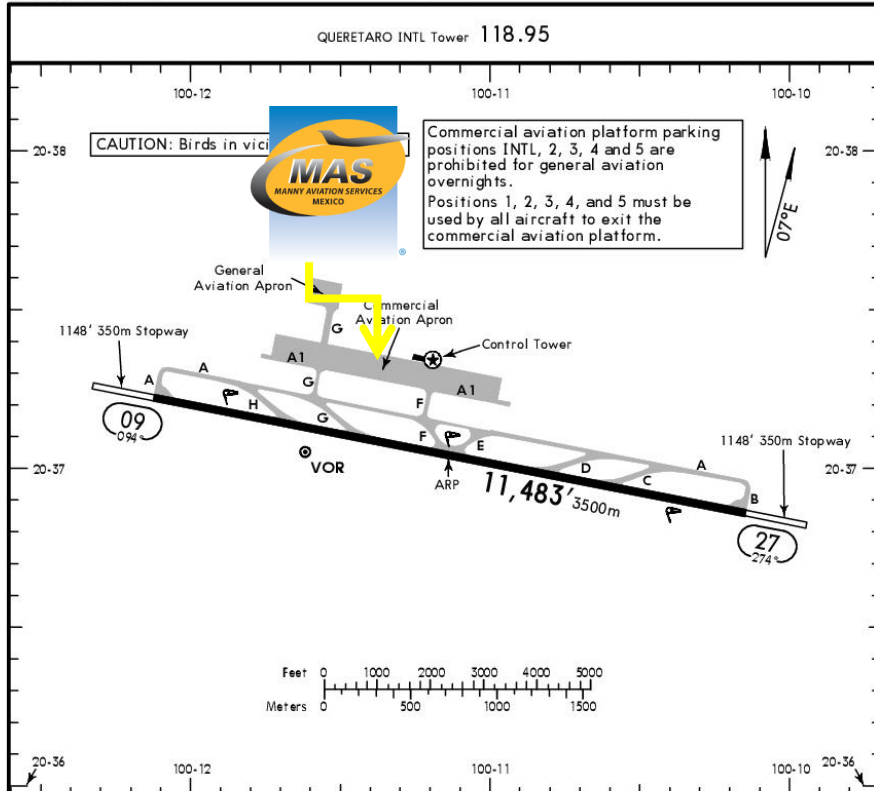




MMQT / QRO QUERÉTARO INTERNATIONAL AIRPORT

MMQT/QRO
Apt Elev **6296'**
N20 37.0 W100 11.1

JEPPESEN QUERETARO, MEXICO
24 MAR 17 **(10-9)** **E11 30 Mar** QUERETARO INTL



Address:

Carretera No 200, Km. 13.5 Querétaro-
Tequisquiapan, Colón, Querétaro.
ZC. 76295

Telephone: +52 (722) 273 0981.

Operational information:

Operational hours: 24 hrs.
Customs and Immigration: 24 hrs.
Business Air FBO: 1400/0100 UTC.
Fuel available: Avgas 100/130 & Jet A-1.

Fuel delays can be expected as the government fuel provider has top priority for commercial operations.

Fuel method of payment:

Credit card, debit card, Uvair-World Fuel card or ASA release.

Fire Cat: VI.

IS-BAH Stage I registered.

Catering service available prior 24 hrs before your delivery time.

ADDITIONAL RUNWAY INFORMATION

RWY	USABLE LENGTHS	LANDING BEYOND	TAKE-OFF	WIDTH
09 27	HIRL REIL PAPI-L (angle 3.0°)			148' 45m

TAKE-OFF

FOR FILING AS ALTERNATE

	TAKE-OFF		FOR FILING AS ALTERNATE
	Rwy 09	Rwy 27	
1 & 2 Eng	200-1	600-1	800-2½
3 & 4 Eng	200-½	600-½	

CHANGES: Airport notes, stopways.

© JEPPESEN, 2003, 2017. ALL RIGHTS RESERVED.



MMQT / QRO QUERÉTARO INTERNATIONAL AIRPORT

Arrival

1. Upon arrival, aircrafts must follow ATC instructions to taxi to the international position
2. One crew member and all passengers will descend and walk into the Customs building following Customs and Immigration procedures; all bags, backpacks, handbags, briefcases must be taken inside the building to be checked by Customs and Immigration, mandatory not use cell phone, iPad's, iPod's, or another electronic device, passengers must be with their luggage all the time. Passports will be taken to the Immigration office to complete the arrival process.
3. Passengers must be with their luggage at all times.
4. Passports will be asked by one of our staff representatives to be taken to the Immigration office in order to complete the arrival process.
5. When all passengers descend, one representative of customs, and agricultural authorities will come on board to check if there are any remaining passengers or luggage, please be advised that all food will be disposed at international arrivals.
6. When the all the CIQ process has finished, passengers and crew may go straight to the FBO facilities, all luggage will be there already.
7. The whole procedure will take around 20-30 minutes; it will depend in ACFT traffic and ETA.

Departure

1. The aircraft will be towed to the international spot 45 minutes before the departure time.
2. A crew member must follow our staff representative with all passports and luggage to be screened at the immigration and customs building, all passengers will have to remain at the FBO facilities to get their passports, once immigration and customs processes are completed all luggage may be loaded inside the aircraft and passengers may come onboard.
3. The whole procedure will take around 20-30 minutes; it will depend in ACFT traffic and ETD.

