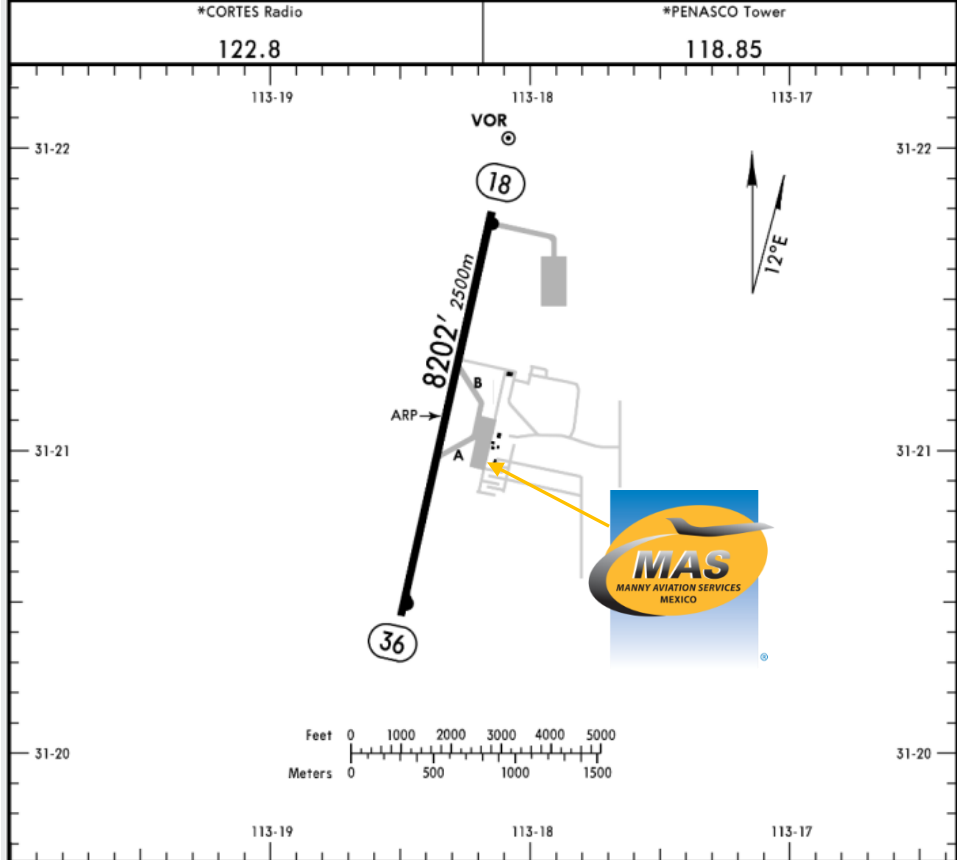




MMPE / PPE
MAR DE CORTES INTERNATIONAL AIRPORT

MMPE
Apt Elev 88'
N31 21.1 W113 18.3

JEPPESEN PUERTO PENASCO, MEXICO
28 MAY 10 (13-1) Eff 3 Jun MAR DE CORTES INTL



RWY	ADDITIONAL RUNWAY INFORMATION	USABLE LENGTHS			WIDTH
		Threshold	Landing Beyond	TAKE-OFF	
18	HIRL PAPI-R (angle 3.0°)				148'
36	HIRL PAPI-L (angle 3.0°)				45m

TAKE-OFF		FOR FILING AS ALTERNATE	
	All Rwys		
1 & 2 Eng	300-1	A	NOT APPLICABLE
3 & 4 Eng	300-1/2	B	
		C	
		D	

Address:
Carretera Peñasco - Caborca Km. 24,
Ejido Miramar, Puerto Peñasco
ZC. 83550.
Telephone: +52 (722) 273 0981.

Operational information:
Operational hours: 1500-0000 UTC.
Customs and Immigration: During airport
operational hours.
Fuel available: Avgas 100/130, Jet A-1.

Fuel delays can be expected as the
government fuel provider has top priority
for commercial operations.

Fuel method of payment:
Credit card, debit card, Uvair-World Fuel
card or ASA release.

AMEX is not accepted.

Fire Cat: VI.



MMPE / PPE MAR DE CORTES INTERNATIONAL AIRPORT

Arrival

1. Upon arrival Aircraft has to follow ATC instructions for taxiing to the General Aviation Apron.
2. Crew and passenger passports will be asked by one of our staff representatives to take them to immigration facilities.
3. Passengers must walk inside the general aviation building to make the CIQ (Customs, Immigration and quarantine) processes. Luggage cannot be inspected without passenger's presence.
4. The whole procedure will take around 10-15 minutes.

Departure

1. Crew and passenger passports will be asked by one of our staff representatives to take them to immigration facilities.
2. After this process, the passenger will be cleared to board the aircraft.
3. The whole procedure will take around 10-15 minutes.

