

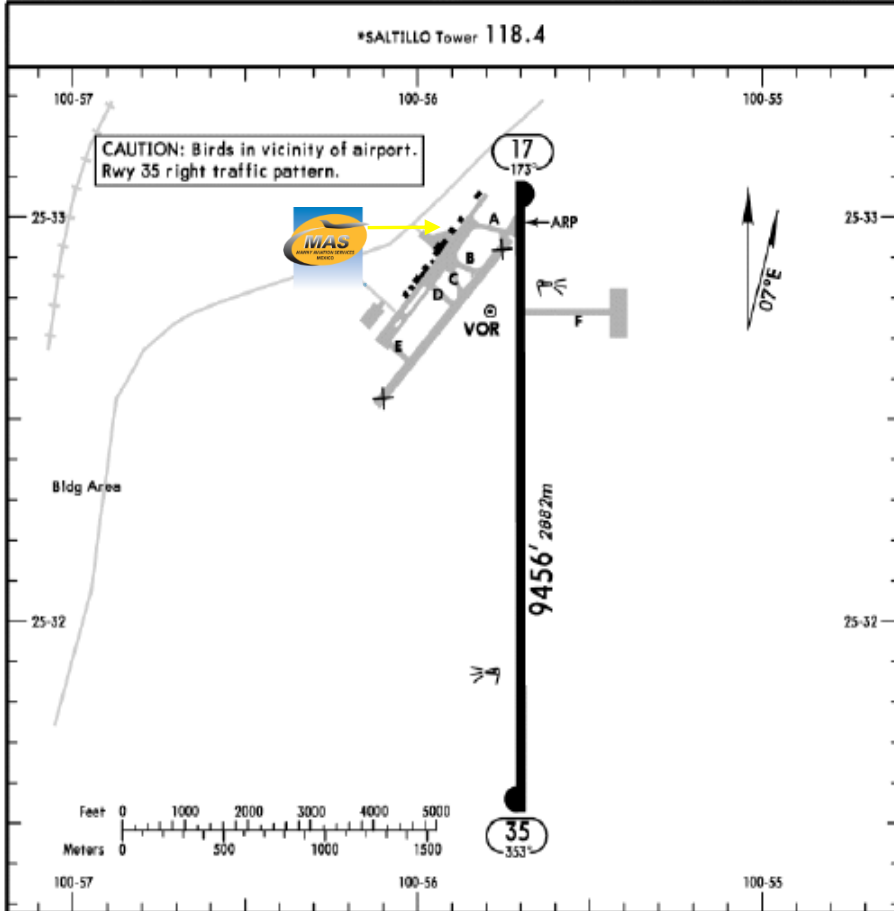


MMIO / SLW  
PLAN DE GUADALUPE INTERNATIONAL AIRPORT

MMIO/SLW  
Apt Elev 4782'  
N25 33.0 W100 55.7

JEPPESEN  
29 APR 11 (11-1) Eff 5 May PLAN DE GUADALUPE INTL

SALTILLO, MEXICO



ADDITIONAL RUNWAY INFORMATION

RWY	35	HIRL PAPI-L (angle 3.0°)	USABLE LENGTHS		TAKE-OFF	WIDTH
			Threshold	Glide Slope		
				8474'		148' 45m

TAKE-OFF & DEPARTURE PROCEDURE

	Rwy 35		Rwy 17		FOR FILING AS ALTERNATE
	DAY	NIGHT	DAY	NIGHT	
1 & 2 Eng	500-1	500-1½	VFR	NA	1300-3
3 & 4 Eng	500-½	500-1			

DEPARTURE PROCEDURE: Rwy 17, climb VFR to the MCA. If unable, turn to cross SLW VOR at or above 7000' and continue climb according to Saltillo 1 (SLW1) departure procedure.  
Departure MCAs: V-39-19 & UJ-11W to NLD 9800';

V-10 & UJ-10-J-29 to MTY 10400'; V-55-19 & UJ-15W-UJ-38 to CVM 11800'; UJ-31 to SLP 11100'; V-39 & UJ-11W to CDR 10000'; J-29 to DGO 8900'; V-10 & UJ-10 to TRC 8800'; UJ-38 to DEL 7900'; V-55 & UJ-31 to MOV 8000'; UT-5 to ZCL 10100'.

Address:

Km. 13.5 Carretera Saltillo-Monterrey,  
Ramos Arizpe, Coahuila. ZC. 25900  
Telephone: +52 (722) 273 0981

Operational information:

Operational hours: Winter 1300-0300 UTC/ Summer 1200 / 0200 UTC  
Customs and Immigration: During airport operational hours.  
Fuel available: Avgas 100/130 & Jet A-1.

Fuel delays can be expected as the government fuel provider has top priority for commercial operations.

Fuel method of payment:

Credit card, debit card, Uvair-World Fuel card or ASA release addressed to:  
SERVICIOS ESTATALES AEROPORTUARIOS

Fire Cat: V

Reproduced with permission of Jeppesen. © Jeppesen, 2013.

CHANGES: Magnetic variation.

© JEPPESEN, 1998, 2011. ALL RIGHTS RESERVED.



# MMIO / SLW PLAN DE GUADALUPE INTERNATIONAL AIRPORT

## Arrival

1. Upon arrival the aircraft must follow ATC instructions for taxiing to the general aviation platform.
2. Crew and passengers passports will be asked by one of our representatives.
3. Passengers must descend and walk inside the main building to make customs and Immigration clearance process; all the luggage must be offloaded including handbags & briefcases and also must be taken inside the building to be inspected by Customs and Federal Police Authorities, passengers must be with their luggage at all times.
4. After the clearance, aircraft must proceed to park to Rajet FBO.
5. The whole process will take around 20-30 minutes; this will depend on how many passengers arrive.

## Departure

1. Our staff will ask for crew and passengers passports as well as the complete luggage.
2. Once passengers arrive they will board the aircraft and will be towed from Rajet FBO to the customs and immigration stand, passengers will have to descend and walk inside the main building due a Federal Police screening, once this is finished they may return to the aircraft where all passports will be returned as well as their entire luggage.
3. The whole process will take around 20-30 minutes.

