



MMUN/CUN
CANCUN INTERNATIONAL AIRPORT

MMUN/CUN

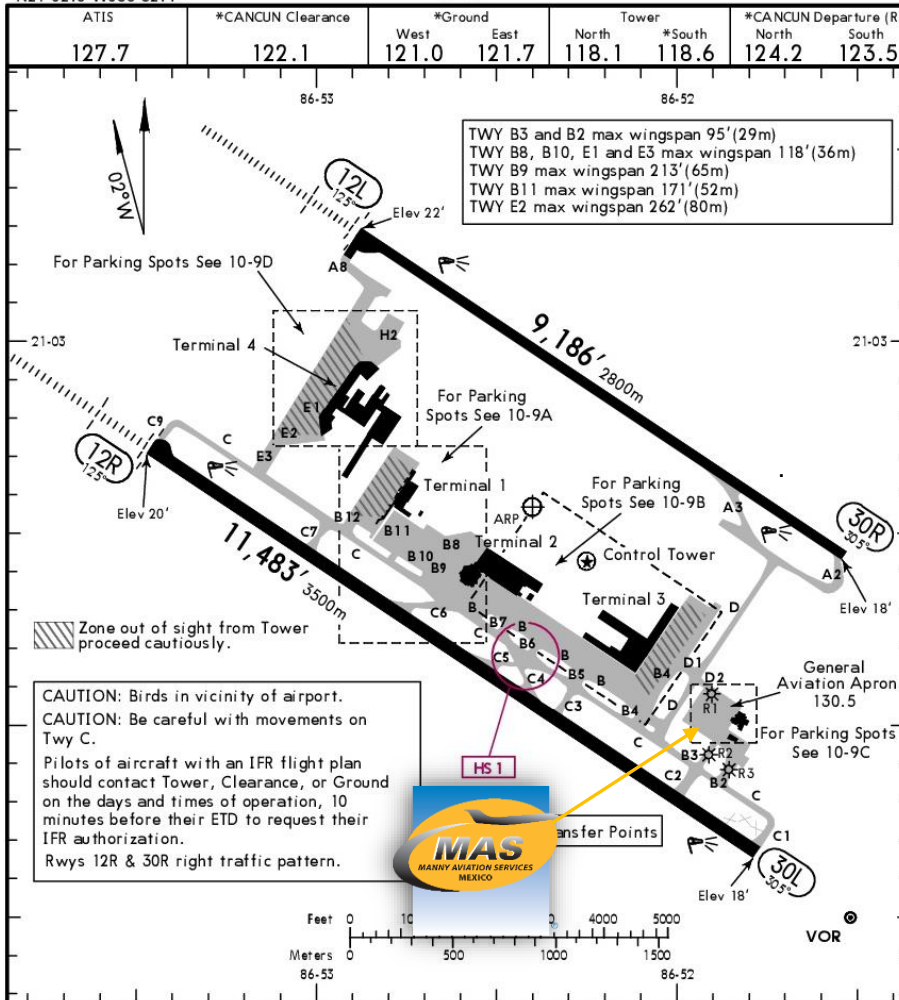
Apt Elev 22'
N21 02.6 W086 52.4

JEPPESSEN

9 MAR 18 (10-9)

CANCUN, MEXICO

CANCUN INTL



Address:

Carretera Cancun-Chetumal Km. 22
Cancun Quintana Roo, Mexico,
C.P. 75220
Telephone: +52 (722) 273 0981

Operational information

Operational hours: 24 hrs.
Customs and immigration hours: 24 hrs.
Fuel available: Avgas 100/130 Jet A1
Fire Cat: IX

ADDITIONAL RUNWAY INFORMATION

RWY		USABLE LENGTHS			WIDTH
		Threshold	Glide Slope	TAKE-OFF	
12R	HIRL REIL ALSF PAPI-L (angle 3.0°)		10,460' 3188m		197' 60m
30L	HIRL REIL PAPI-L (angle 3.0°)				
12L	HIRL REIL ALSF PAPI-L (angle 3.0°)		8037' 2450m		148' 45m
30R	HIRL REIL PAPI-L (angle 3.0°)				

HOT SPOTS

HS 1 Aircraft landing on Runway 12R/30L must vacate the runway completely, crossing the holding points of the runway until taxiway C.

	TAKE-OFF	FOR FILING AS ALTERNATE	
		Precision	Non-Precision
	All Rwy's		
1 & 2 Eng	3/4	A B C 600-2	800-2
3 & 4 Eng	1/2		

CHANGES: Parking insets.

© JEPPESSEN, 1999, 2018. ALL RIGHTS RESERVED.



MMUN/CUN CANCUN INTERNATIONAL AIRPORT

Arrivals

1. Expect ground control instructions to taxi to ASUR FBO, which is located on F1 coming from F (Foxtrot) taxiway, or C3 & C4, coming from A (Alfa) taxiway.
2. Migratory and Customs pre-filled forms will be delivered to both crew and passengers.
3. Our team will take the luggage of passengers and crew, Customs Services, SAGARPA and MIGRATION are inside the FBO on one side of the VIP room, please keep in mind there will be a luggage inspection.
4. Crew members must not bring alcoholic beverages, cigarettes, golf equipment, scuba, diving, cameras nor video equipment that generate a tax of around 300% of the market value of the equipment.
5. The whole procedure will take around 15 minutes.

Departures

1. Once the crew and passengers arrive to the FBO, they will be asked for his passports and luggage, then our handlers will take the passports to immigration to be stamped and authorized for departure.
2. Once done the immigration procedure, the handlers will take the luggage to customs to be revised, and then the passengers will walk through the arc metal detector and walk to the aircraft.
3. The AC will be in departure slot without need to be towed.
4. Customs pre-filled forms will be delivered to both crew and passengers.
5. The whole procedure will take around 15 minutes.

