

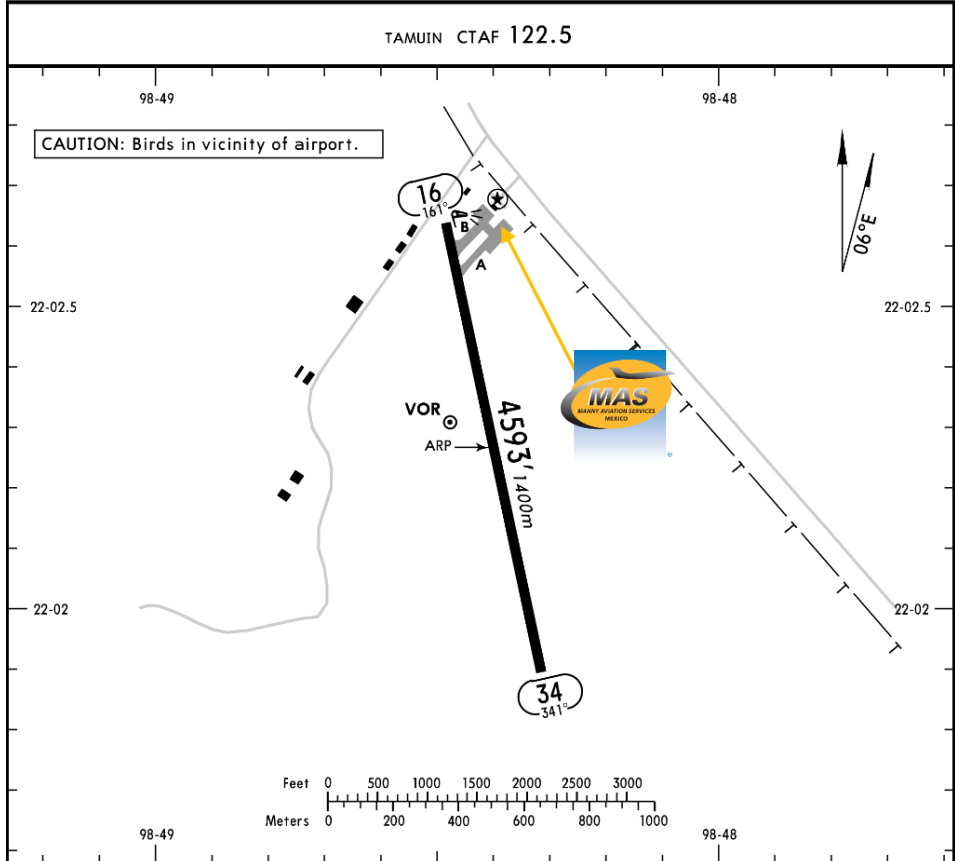


MMTN/TSL
TAMUIN NATIONAL AIRPORT

MMTN/TSL
Apt Elev 164'
N22 02.3 W098 48.4

JEPPESEN
4 MAR 11
Eff 10 Mar (13-1)

TAMUIN, MEXICO
TAMUIN



Address:

Km. 5 Carretera Estación Palma,
Tamuin San Luis Potosí, C.P. 79200

Telephone: +52 (722) 273 0981

Operational information:

Operational hours: Winter 1500-0000
UTC / Summer 1400-2300 UTC
Customs and Immigration: NOT
AVAILABLE
Fuel available: Avgas 100/130, Jet A1
Fire Cat: II

ADDITIONAL RUNWAY INFORMATION

RWY	USABLE LENGTHS		TAKE-OFF	WIDTH
	Threshold	Landing Beyond Glide Slope		
16 34				98' 30m

	TAKE-OFF		FOR FILING AS ALTERNATE		
	All Rwys		DAY	NIGHT	
	DAY	NIGHT			
1 & 2 Eng	300-1	NA	A	800-2	NA
3 & 4 Eng			B		
			C		
			D	NOT APPLICABLE	



MMTN/TSL TAMUIN NATIONAL AIRPORT

Arrivals

1. Upon arrival Crew must follow ATC's instructions to taxi into General Aviation Apron.
2. When passengers descend the aircraft, one representative of Federal Police will check the aircraft and passengers' luggage.
3. Passengers will descend and walk into the General Aviation Terminal to take their ground transportation.

Departures

1. Crew and passengers arrive to the General Aviation Terminal.
2. Our Agent will be waiting for Crew and passengers, help them with their baggage and coordinate all services for departure.

