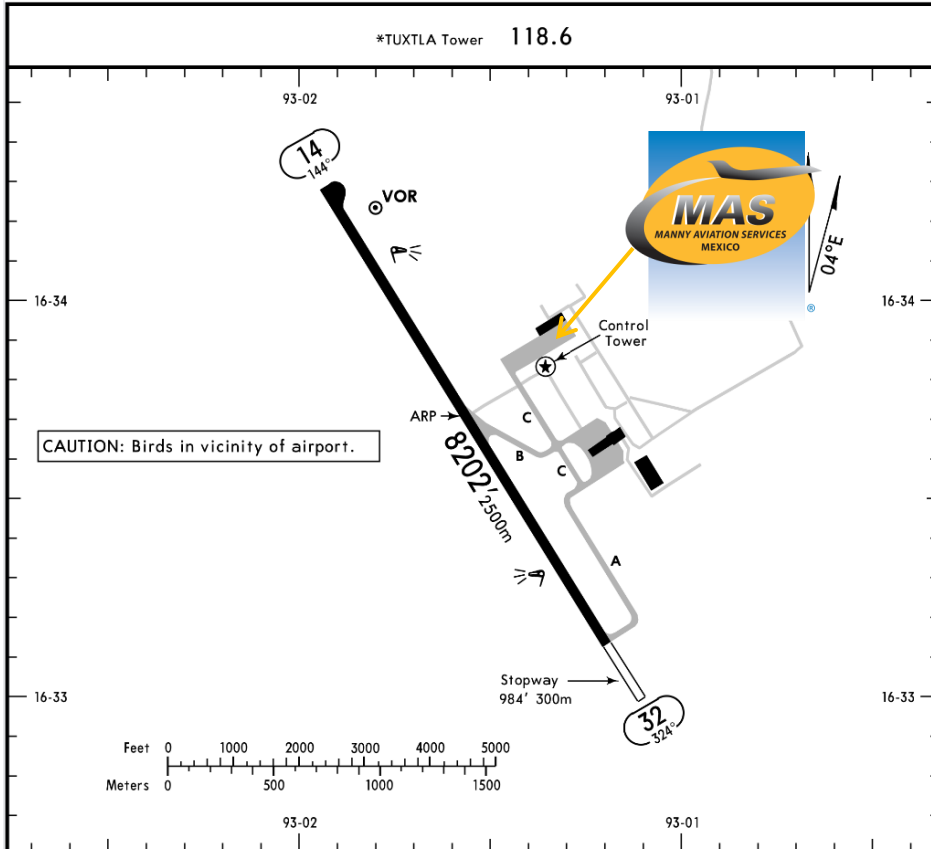




MMTG/TGZ  
ANGEL ALBINO CORZO INTERNATIONAL AIRPORT.

MMTG/TGZ  
Apt Elev 1491'  
N16 33.7 W093 01.6

JEPPESEN TUXTLA GUTIERREZ, MEXICO  
21 OCT 16 (10-9) ANGEL ALBINO CORZO



**Address:**

Km 12.48 carretera vergel Aeropuerto  
Chiapa de Corzo, Chiapas  
C.P. 29160  
Telephone: +52 (722) 273 0981

**Operational information:**

Operational hours: Winter 1300-0500  
UTC. / Summer 1200-0400 UTC  
Customs and immigration: Only on  
airport operational hours.  
Fuel available: Avgas 100/130, Jet A1.  
Fire Cat: VI

ADDITIONAL RUNWAY INFORMATION

RWY	HIRL	REIL	PAPI-L (angle 3.1°)	USABLE LENGTHS		TAKE-OFF	WIDTH
				Threshold	Glide Slope		
14 32	HIRL	REIL	PAPI-L (angle 3.0°)		7061' 2152m		148' 45m

TAKE-OFF		FOR FILING AS ALTERNATE
All Rwys		
1 & 2 Eng	400-1	800-2
3 & 4 Eng	300-1/2	



MMTG/TGZ  
ANGEL ALBINO CORZO INTERNATIONAL AIRPORT.

**Arrivals**

1. Upon arrival aircraft must follow ATC instructions to taxi into to the general aviation apron.
2. Crew and passengers passports will be given to one of our agents.
3. Passengers will disembark and walk into the General Aviation terminal to follow customs and immigration procedures; all bags, backpacks, handbags, briefcases must be taken inside the terminal to be subject to a review process by the customs and federal police authorities, the passengers must be with their luggage all the time.

4. The whole procedure will take around 20-30 minutes; this will depend on how many passengers arrive.

**Departures**

1. Our agents will take the crew and passenger passports among with the luggage.
2. The passengers and crew will pass for immigration and customs. And then they will board the aircraft.
3. The whole procedure will take around 20-30 minutes; this will depends on how many passengers arrive and also on how many aircrafts be at the position at the time.

