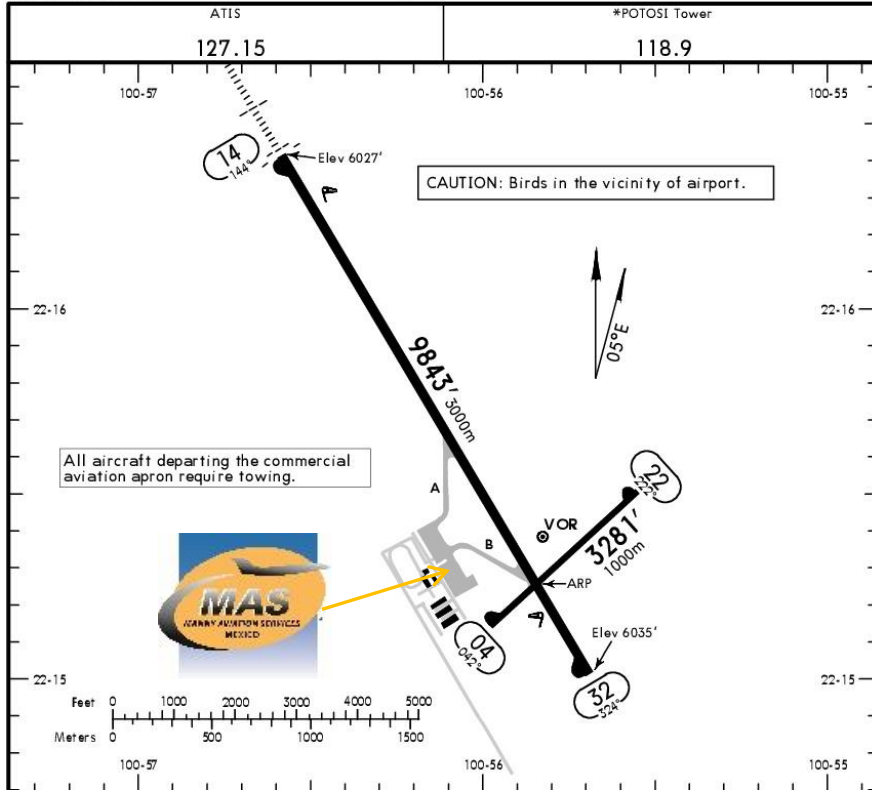




MMS/SLP
PONCIANO ARRIAGA INTERNATIONAL AIRPORT

MMS/SLP
Apt Elev 6035'
N22 15.3 W100 55.8

JEPPESEN SAN LUIS POTOSI, MEXICO
20 APR 18 (10-9) E11 26 Apr PONCIANO ARRIAGA INTL



Address:

Carretera a Matehuala Km. 9.5
Ejido Maravillas
San Luis Potosi, San Luis Potosi
C.P. 50130
Telephone +52(722) 273 0981

Operational information:

Operational hours: 24 hrs.
Customs and immigration: 24 hrs.
Fuel available: Avgas 100/130, Jet A1
Fire Cat: VI

ADDITIONAL RUNWAY INFORMATION

RWY	USABLE LENGTHS	LANDING BEYOND		TAKE-OFF	WIDTH
		Threshold	Glide Slope		
04 22					98' 30m
14 32	HIRL (90°) ALSF-I REIL PAPI-L (angle 3.0°)		8694' 2650m		148' 45m

TAKE-OFF

FOR FILING AS ALTERNATE

	Rwys 14, 32		Rwys 04, 22		FOR FILING AS ALTERNATE			
	TAKE-OFF OPERATIONS WITH REDUCED RANGE VISIBILITY OF RUNWAY	Other	DAY	NIGHT	Precision	Non-Precision		
2 Eng	1/4	1 & 2 Eng	500-1	VFR	NA	A	600-2	1100-3
3 & 4 Eng		3 & 4 Eng	500-1/2			B		
				C				
				D				

CHANGES: Re-indexed, magnetic variation, runway bearings.

© JEPPESEN, 1999, 2018. ALL RIGHTS RESERVED.



MMSP/SLP
PONCIANO ARRIAGA INTERNATIONAL AIRPORT

Arrivals

1. Upon arrival AC must follow ATC instructions and taxi to customs building, which is in front of taxiway B (Bravo).
2. Passengers disembark and proceed to building to follow immigration and customs process.
3. Migratory and Customs pre-filled forms will be delivered to crew and passengers by our representative to be signed.

4. All required services will be provided in the customs building.

Departures

1. Our agents will take the crew and passenger passports among with the luggage.
2. Once the passengers arrive they will board the aircraft and our agents will take the passports to immigration agent.

