

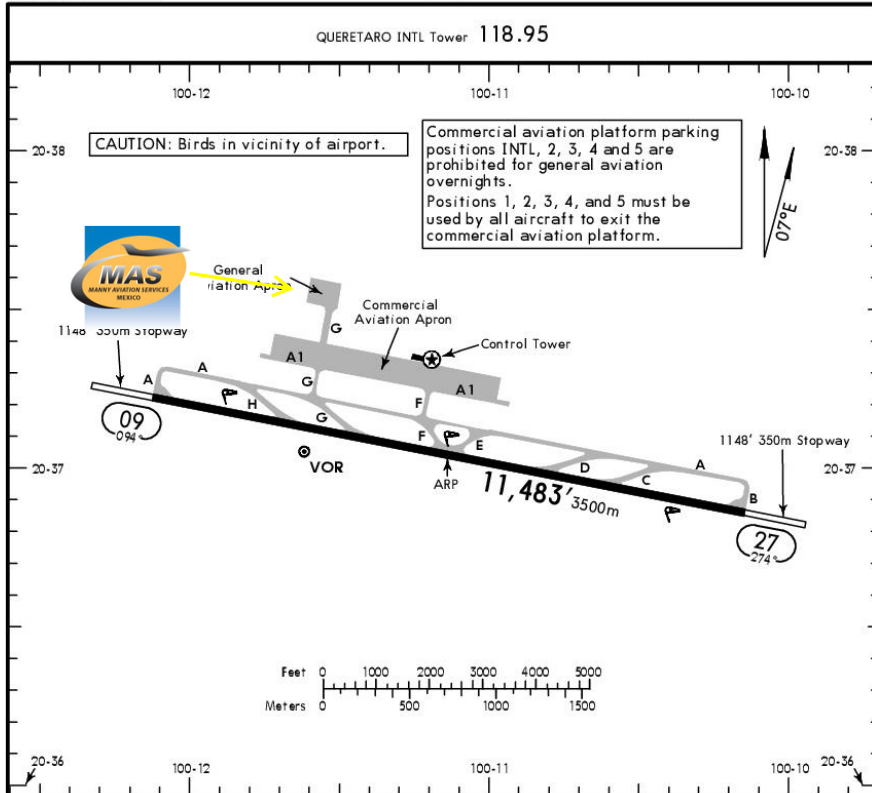


MMQT / QRO
 JG. FERNANDO ESPINOZA GUTIERREZ INTERNATIONAL AIRPORT

MMQT/QRO
 Apt Elev 6296'
 N20 37.0 W100 11.1

JEPPESEN
 24 MAR 17 (10-9) E11 30 Mar

QUERETARO, MEXICO
 QUERETARO INTL



Address:

Carretera No 200, Km. 13.5 Querétaro-
 Tequisquiapan, Colón, Querétaro.
 C.P. 76295
 Telephone +52 (722) 273 0981

Operational information:

Operational hours: 24 hrs.
 Customs and immigration: 24 hrs.
 Fuel available: Avgas 100/130, Jet A1
 FBO Operational hours: Winter 1400-
 0300 UTC / Summer 1300-0200 UTC
**Overtime can be arranged up 0500
 UTC. If it is requested before
 16:00hrs, Local / 2200 UTC. And it
 has an extra charge.**

ADDITIONAL RUNWAY INFORMATION

RWY	HIRL REIL PAPI-L (angle 3.0°)	USABLE LENGTHS			WIDTH
		Threshold	Landing Beyond Glide Slope	TAKE-OFF	
09 27					148' 45m

TAKE-OFF

FOR FILING AS ALTERNATE

	Rwy 09	Rwy 27	
1 & 2 Eng	200-1	600-1	A
3 & 4 Eng	200-1/2	600-1/2	B
			C
			D

CHANGES: Airport notes, stopways.

© JEPPESEN, 2003, 2017. ALL RIGHTS RESERVED.



Arrivals

1. Upon arrival, Crew must follow ATC instructions to taxi Customs building, which is A (Alfa) taxiway crossing to G (Golf) taxiway on position 1C, 2C, 3C, and 4C.
2. Crew and passengers' passports will be given to one of our Agents.
3. Passengers will descend and walk into the Customs building to follow Customs and Immigration procedures; all bags, backpacks, handbags, briefcases must be taken inside the building to be checked by Customs and Federal Police Authorities, passengers must be with their luggage all the time. Passports will be taken to the Immigration office to complete the arrival process.
4. When passengers descend from aircraft, one representative of Customs, Federal Police and Agricultural Authorities will board to AC to check if any passengers or luggage remain on board, please

remember that no food can be introduced into Mexican territory.

5. When customs and immigration process be finished, passengers and Crew will return to the aircraft and then AC will be towed to the FBO facilities, luggage will be at the FBO when aircraft/Crew/passengers arrive.

Departures

1. Our Agents will take Crew and passengers' passports among with the luggage.
2. Once passengers arrive, they will board the aircraft and will be towed to Customs and Immigration stand, then passengers will descend and walk into the terminal to a Federal Police check, once finished they will return to the aircraft and passports will be returned.

