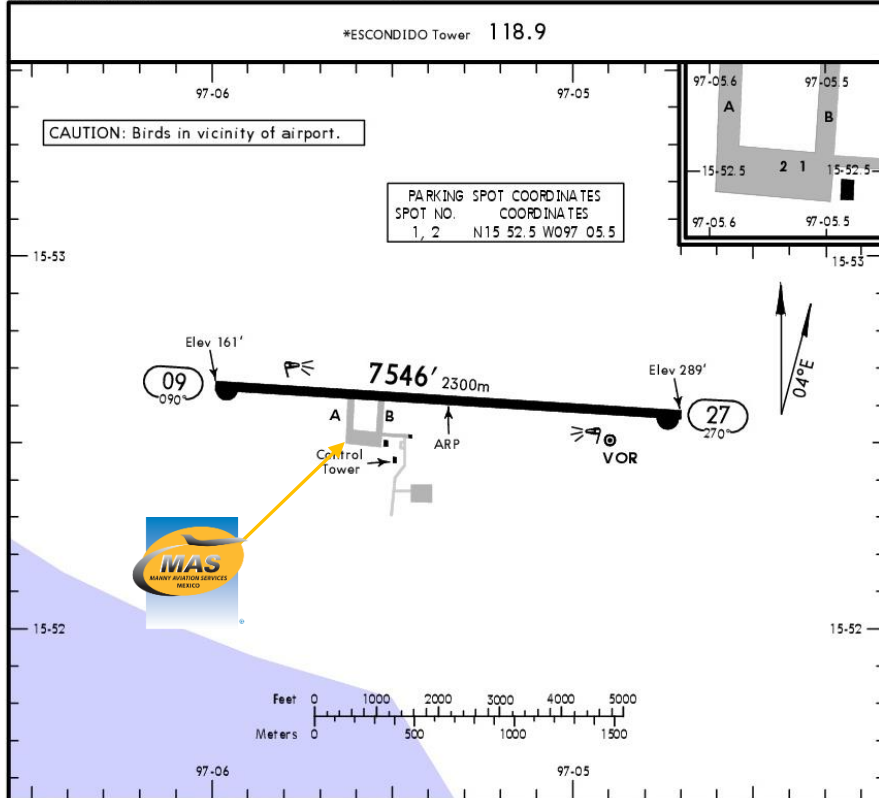




MMPS/PXM  
 PUERTO ESCONDIDO INTERNATIONAL AIRPORT

MMPS/PXM  
 Apt Elev 294'  
 N15 52.6 W097 05.3

JEPPESEN PUERTO ESCONDIDO, MEXICO  
 15 JUN 18 (10-9) E11 21 Jun PUERTO ESCONDIDO INTL



**Address:**

Carretera Costera km. 136.9, Tramo Pinotepa Nacional-Puerto Escondido, C.P. 71984, Municipio San Pedro Mixtepec, Oaxaca, México.

Telephone: +52 (722) 273 0981

**Operational information:**

Operational hours: Winter 1300-0100 UTC / Summer 1200-0000 UTC

Customs and Immigration: Only on airport operational hours

Fuel available: Avgas 100/130, Jet A1

Fire Cat: VIII

ADDITIONAL RUNWAY INFORMATION

RWY	USABLE LENGTHS LANDING BEYOND	TAKE-OFF	WIDTH
09 27	HIRL REIL PAPI-L (angle 3.0°)		148' 45m

TAKE-OFF

FOR FILING AS ALTERNATE

	Rwy 09	Rwy 27	
1 & 2 Eng	500-1	1	A B C D 800-2
3 & 4 Eng	500-1/2	1/2	

CHANGES: Runway bearings.

© JEPPESEN, 2004, 2018. ALL RIGHTS RESERVED.



MMPS/PXM  
PUERTO ESCONDIDO INTERNATIONAL AIRPORT

### Arrivals

1. Upon arrival Crew must follow ATC's instructions to taxi into General Aviation Apron.
2. Crew and passengers' passports will be given to one of our agents.
3. When passengers descend the aircraft, one representative of Customs, Federal Police and Agricultural Authorities will board the aircraft to verify that any passengers, nor luggage, remain on board. Please remember that no food can enter Mexican territory.
4. Passengers will descend and walk into the General Aviation Terminal to follow Immigration and Customs'

- procedures; all bags, backpacks, handbags, briefcases, etc., must be taken inside the terminal to be checked by Customs Authorities, passengers must be with their luggage all the time. Passports will be taken to the Immigration Office to complete the arrival process.
5. The whole process will take around 15-20 minutes.

### Departures

1. Our agents will take Crew and passengers' passports among their luggage.
2. Luggage will be taken into the x ray machine for security purposes.
3. The whole process will take around 15-20 minutes.

