

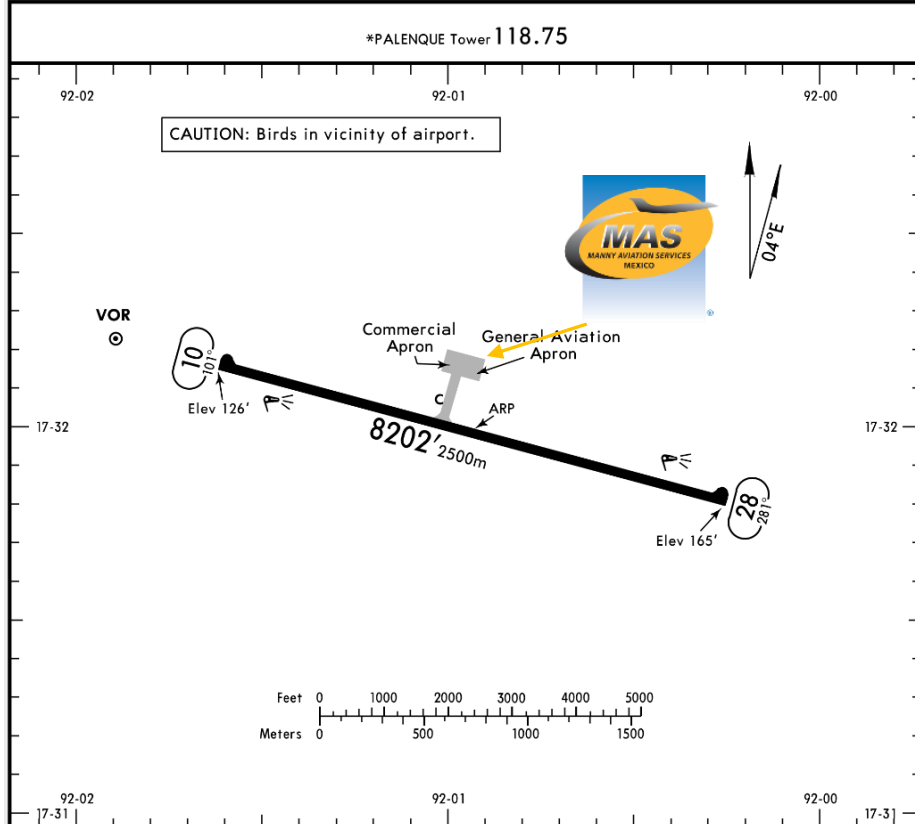


MMPQ/PQM  
PALENQUE INTERNATIONAL AIRPORT

MMPQ/PQM  
Apt Elev 165'  
N17 32.0 W092 00.9

JEPPESEN  
20 MAY 16 (10-9) Eff 26 May

PALENQUE, MEXICO  
PALENQUE INTL



**Address:**

Carretera Federal Catazaja-Rancho Nuevo km. 24.5, Col. Pakal Na, C.P. 29960

Telephone: +52 (722) 273 0981

**Operational information:**

Operational hours: Winter 1300-0100 UTC / Summer 1200-0000 UTC

Customs and Immigration: During airport operational hours

Fuel available: Jet A1

Fire Cat: V

| RWY      | HIRL PAPI-L (angle 3.0°) | USABLE LENGTHS |             |          | WIDTH       |
|----------|--------------------------|----------------|-------------|----------|-------------|
|          |                          | Threshold      | Glide Slope | TAKE-OFF |             |
| 10<br>28 |                          |                |             |          | 148'<br>45m |
|          |                          |                |             |          |             |
|          |                          |                |             |          |             |
|          |                          |                |             |          |             |

| TAKE-OFF  |        |        |
|-----------|--------|--------|
|           | Rwy 10 | Rwy 28 |
| 1 & 2 Eng | 500-1  | 300-1  |
| 3 & 4 Eng |        |        |



MMPQ/PQM  
PALENQUE INTERNATIONAL AIRPORT

**Arrivals**

1. Upon arrival Crew must follow ATC's instructions to taxi into General Aviation Apron.
2. Crew and passengers' passports will be given to one of our agents.
3. When passengers descend the aircraft, one representative of Customs, Federal Police and Agricultural Authorities will board the aircraft to verify that any passengers, nor luggage, remain on board. Please remember that no food can enter Mexican territory.
4. Passengers will descend and walk into the General Aviation Terminal to follow Immigration and Customs' procedures; all bags, backpacks, handbags, briefcases, etc., must be taken

inside the terminal to be checked by Customs Authorities, passengers must be with their luggage all the time. Passports will be taken to the Immigration Office to complete the arrival process.

5. The whole process will take around 15-20 minutes.

**Departures**

1. Our agents will take Crew and passengers' passports among their luggage.
2. Luggage will be taken into the x ray machine for security purposes.
3. The whole process will take around 15-20 minutes.

