

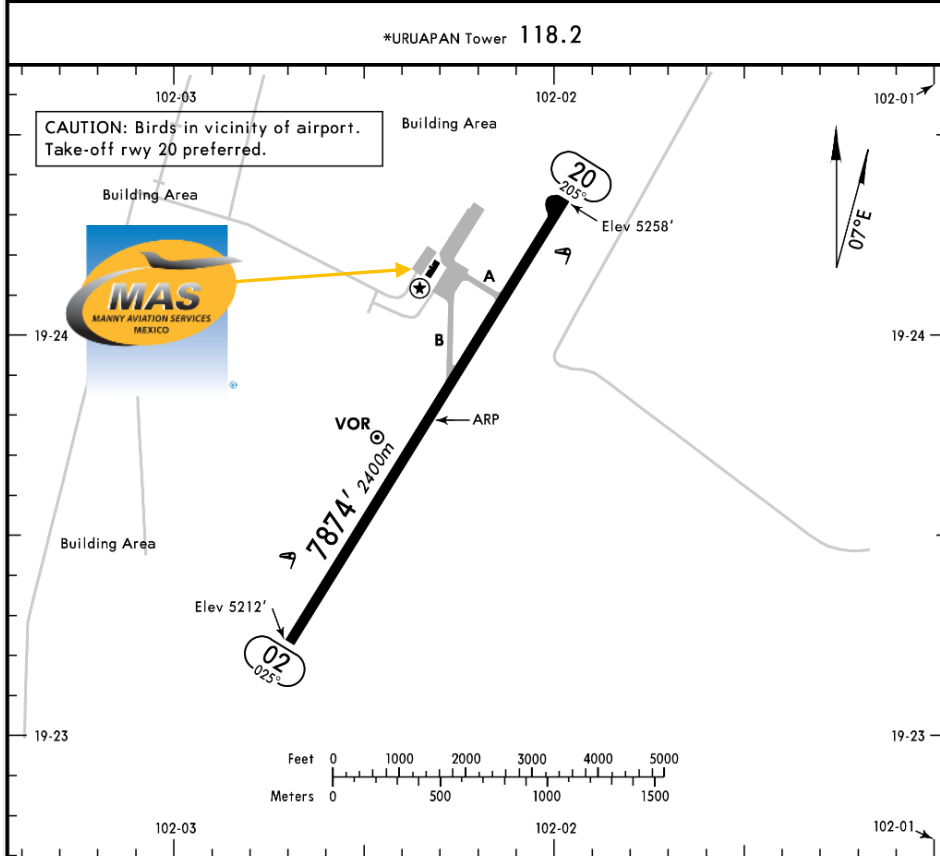


MMPN/UPN
GRAL. FRANCISCO MUJICA NATIONAL AIRPORT

MMPN/UPN
Apt Elev 5258'
N19 23.8 W102 02.3

JEPPESEN
21 NOV 14 (13-1)

URUAPAN, MEXICO
GEN IGNACIO LOPEZ RAYON



Address:

Avenida Latinoamericana S/N,
Fraccionamiento San José Obrero,
Uruapan, Michoacán.

Telephone: +52 (722) 273 0981

Operational information:

Operational hours: Winter 1300-0100 UTC
Summer 1200-0000 UTC
Customs and Immigration: NOT AVAILABLE
Fuel available: Avgas 100/130, Jet A1
Fire Cat: V

ADDITIONAL RUNWAY INFORMATION

RWY		USABLE LENGTHS		TAKE-OFF	WIDTH
		Threshold	Glide Slope		
02	MIRL REIL PAPI-L (angle 3.0°)				148'
20	MIRL REIL PAPI-L (angle 3.0°)				45m

① Usage restricted to 3.0 DME.

TAKE-OFF & DEPARTURE PROCEDURE

FOR FILING AS ALTERNATE

	Rwy 20		Rwy 02		DAY	NIGHT
	DAY	NIGHT	DAY	NIGHT		
1 & 2 Eng	500-1		VFR	NOT APPLICABLE	A	1500-5
3 & 4 Eng					B	NOT APPLICABLE
					C	
					D	

DEPARTURE PROCEDURE: Rwy 20, see 10-3 chart (CLIMB VOR DME UPN RWY 20). Rwy 02, VFR.
Departure MCAs: V-17 & UJ-65 to MLM 11000'; V-18 & UJ-18 to TLC 11000'; V-3 to ZIH 10000';

V-18 & UJ-18 to ZLO 13500'; V-3 & UJ-3-7 to GDL 12500'; UJ-3-7 to ACA 10000'.



MMPN/UPN
GRAL. FRANCISCO MUJICA NATIONAL AIRPORT

Arrivals

1. Upon arrival Crew must follow ATC's instructions to taxi into General Aviation Apron.
2. When passengers descend the aircraft, one representative of Federal Police will check the aircraft and passengers' luggage.
3. Passengers will descend and walk into the General Aviation Terminal to take their ground transportation.

Departures

1. Crew and passengers arrive to the General Aviation Terminal.
2. Our Agent will be waiting for Crew and passengers, help them with their baggage and coordinate all services for departure.

