



MMPG/PNG
PIEDRAS NEGRAS INTERNATIONAL AIRPORT

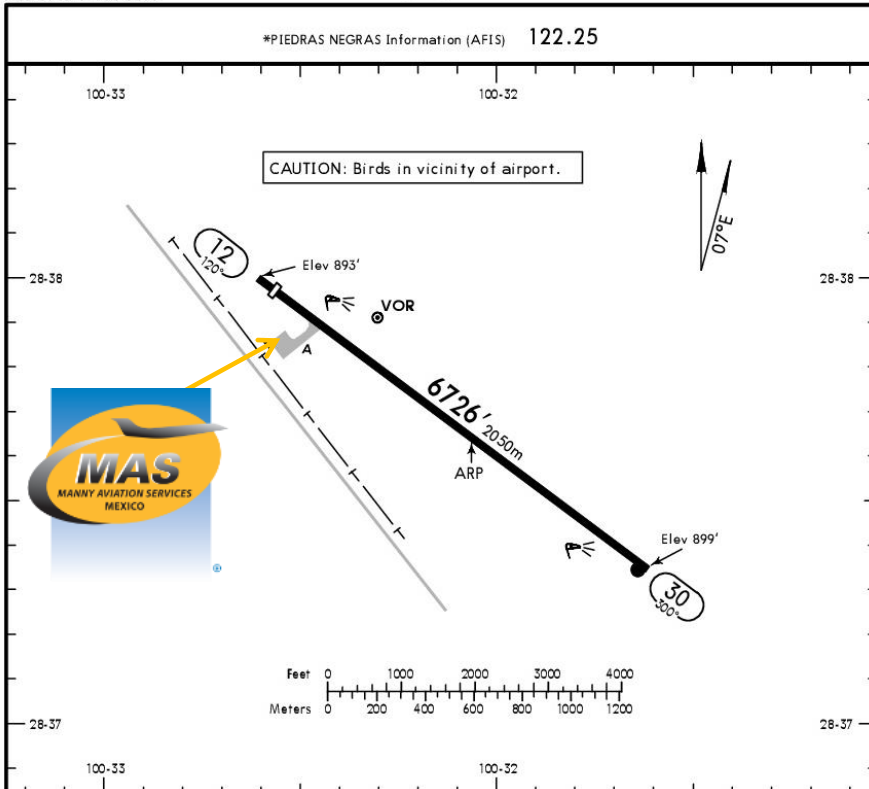
MMPG/PDS

Apt Elev 901'
N28 37.6 W100 32.1



PIEDRAS NEGRAS, MEXICO

30 JUN 17 (13-1) PIEDRAS NEGRAS INTL



Address:

Carretera Piedras Negras – Nuevo Laredo
Km. 3.5 Piedras Negras Coahuila
Telephone +52 (722) 273 0981

Operational information:

Operational hours: Winter 1300-0100 UTC /
Summer 1200-0000 UTC
Immigration and Customs: During airport
operational hours only
Fuel available: Avgas 100/130 Jet A1
Fire Cat: III

ADDITIONAL RUNWAY INFORMATION

RWY				USABLE LENGTHS		TAKE-OFF	WIDTH
	HIRL	REIL	PAPI-L (angle 3.0°)	Threshold	Glide Slope		
12	HIRL	REIL	PAPI-L (angle 3.0°)	6398' 1950m			105'
30	HIRL	REIL	APAPI-L (angle 3.0°)				32m
TAKE-OFF							
All Rwys							
1 & 2 Eng	500-1						
3 & 4 Eng	500-1/2						

For departure procedure and MCAs see 10-3 and 10-3A.

CHANGES: Runway bearings, rwy elevations, usable length, lighting. © JEPPESON, 1999, 2017. ALL RIGHTS RESERVED.



MMPG/PNG
PIEDRAS NEGRAS INTERNATIONAL AIRPORT

Arrivals

1. Upon arrival the Crew must follow ATC's instructions to taxi into General Aviation Apron.
2. Crew and passengers' passports will be given to one of our Agents.
3. When passengers descend the aircraft, one representative of Customs, Federal Police and Agricultural Authorities will board the aircraft to verify that any passengers, nor luggage, remain on board. Please remember that no food can enter Mexican territory.
4. Passengers will descend and walk into the General Aviation Terminal to follow Immigration and Customs' procedures; all bags, backpacks, handbags,

briefcases, etc., must be taken inside the terminal to be checked by Customs and Federal Police Authorities, passengers must be with their luggage all the time. Passports will be taken to the Immigration Office to complete the arrival process.

5. The whole process will take around 15-20 minutes.

Departures

1. Our agents will take Crew and passenger's passports among their luggage.
2. Luggage will be taken into the x ray machine for security purposes.
3. The whole process will take around 15-20 minutes.

