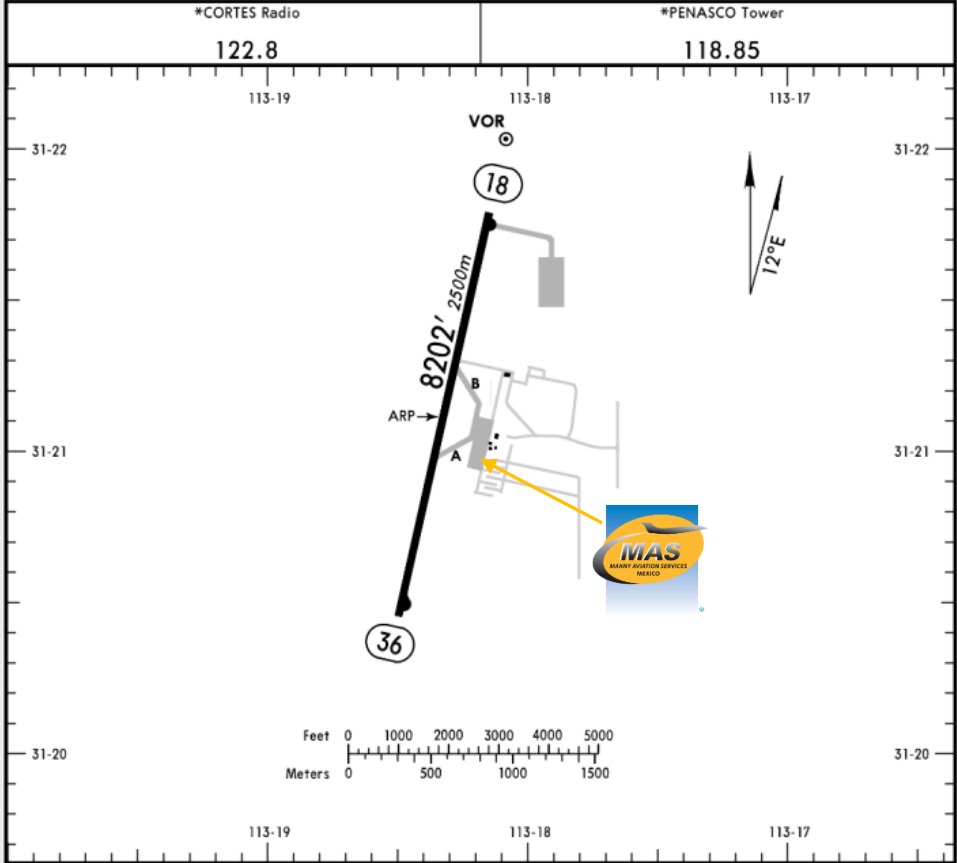




MMPE / PPE
MAR DE CORTEZ INTERNATIONAL AIRPORT

MMPE **JEPPESEN** **PUERTO PEÑASCO, MEXICO**
 Apt Elev **88'** 28 MAY 10 (13-1) Eff 3 Jun MAR DE CORTEZ INTL
 N31 21.1 W113 18.3



Address:
 Carretera Peñasco-Caborca km. 24,
 Ejido Miramar, Puerto Peñasco
 C.P. 83550

Telephone: +52 (722) 273 0981

Operational information:
 Operational hours: 1500-0000 UTC
 Customs and Immigration: 1500-0000 UTC
 Fuel available: Avgas 100/130, Jet A1
 Fire Cat: VI

RWY		USABLE LENGTHS			WIDTH
		Threshold	Landing Beyond	Take-off	
18	HIRL PAPI-R (angle 3.0°)				148'
36	HIRL PAPI-L (angle 3.0°)				45m

TAKE-OFF		FOR FILING AS ALTERNATE	
All Rwys			
1 & 2 Eng	300-1	A	NOT APPLICABLE
3 & 4 Eng	300-1/2	B	
		C	
		D	



MMPE / PPE
MAR DE CORTEZ INTERNATIONAL AIRPORT

Arrivals

1. Upon arrival Crew must follow ATC's instructions to taxi into General Aviation Apron.
2. Crew and passengers' passports will be given to one of our agents.
3. When passengers descend the aircraft, one representative of Customs, Federal Police and Agricultural Authorities will board the aircraft to verify that any passengers, nor luggage, remain on board. Please remember that no food can enter Mexican territory.
4. Passengers will descend and walk into the General Aviation Terminal to follow Immigration and Customs' procedures; all bags, backpacks, handbags, briefcases, etc., must be taken inside the terminal to be checked by Customs Authorities, passengers must be

with their luggage all the time. Passports will be taken to the Immigration Office to complete the arrival process.

5. The whole process will take around 15-20 minutes.

Departures

1. Our agents will take Crew and passengers' passports among their luggage.
2. If the flight has additional passengers different to the arrival manifest the immigration authorities will be checking the legal status in Mexico of these new passengers, this process takes around 25 minutes.
3. Luggage will be taken into the x ray machine for security purposes.
4. The whole process will take around 15-20 minutes.

