



MMPB/PBC
HERMANOS SERDAN INTERNATIONAL AIRPORT

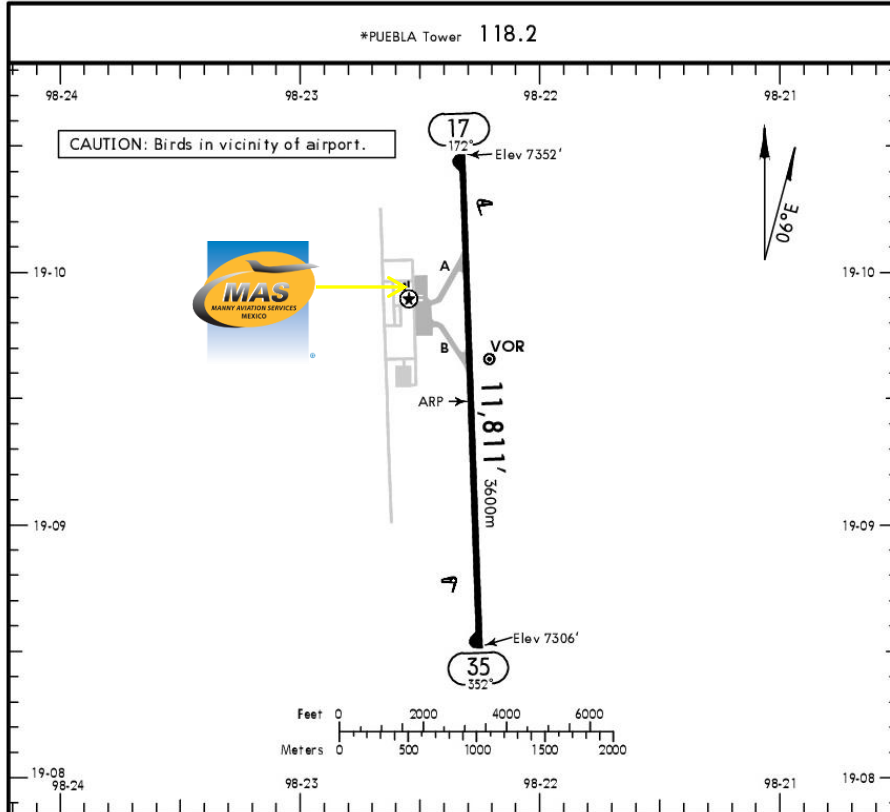
MMPB/PBC

Apt Elev 7361'
N19 09.5 W098 22.3



20 APR 18 (10-9) EII 26 Apr

PUEBLA, MEXICO
HERMANOS SERDAN INTL



Address:

Carretera libre México – Puebla km. 91.5,
Huejotzingo, Puebla. C.P. 74160

Telephone +52 (722) 273 0981

Operational information:

Operational hours: Winter 1300-0100 UTC /
Summer 1200-0000 UTC

Customs and immigration: During the hours
of operation of the airport

Fuel available: Avgas 100/130 Jet A1

Fire Cat: VI

ADDITIONAL RUNWAY INFORMATION

RWY	USABLE LENGTHS	LANDING BEYOND	TAKE-OFF	WIDTH
17 35	HIRL REIL PAPI-L (angle 3.0°)			148' 45m

	TAKE-OFF	FOR FILING AS ALTERNATE
	All Rwy's	
1 & 2 Eng	1	800-2
3 & 4 Eng	1/2	

CHANGES: Airport elevation, chart re-indexed.

© JEPPesen, 2002, 2018. ALL RIGHTS RESERVED.



MMPB/PBC
HERMANOS SERDAN INTERNATIONAL AIRPORT

Arrivals

1. Upon arrival Crew must follow ATC instructions to taxi into General Aviation Apron.
2. Crew and passengers' passports will be given to one of our Agents.
3. Passengers will descend and walk into the General Aviation Terminal to follow Customs and Immigration procedures; all bags, backpacks, handbags, briefcases must be taken inside the terminal to be checked by Customs and Federal Police Authorities, passengers must be with their luggage all the time.
4. The whole procedure will take around 20-30 minutes; this will depend on how many passengers arrive.

Departures

1. Our Agents will take Crew and passengers' passports among with the luggage.
2. Once passengers arrive to the General Aviation Terminal and they will go thru Customs and Immigration stand, once finished they will return to the aircraft and passports will be returned.
3. The whole procedure will take around 20-30 minutes, this will depends on how many passengers arrive and also on how many aircrafts be at the position at the time.

