



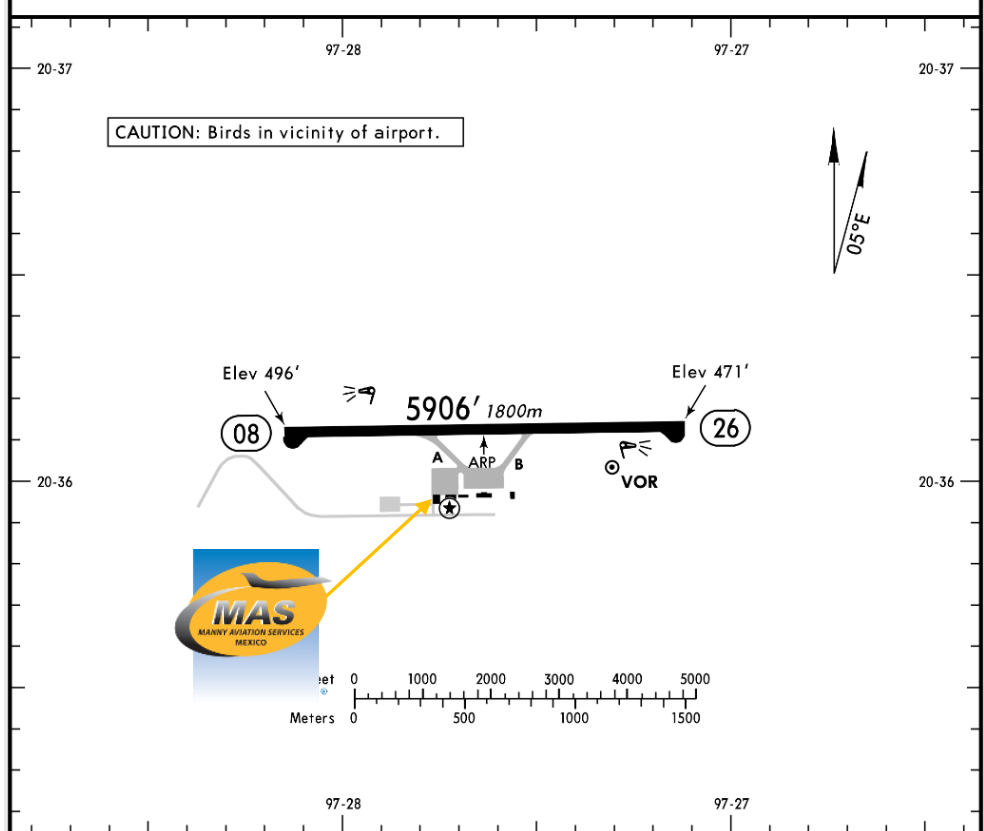
MMPA/PAZ  
TAJIN NATIONAL AIRPORT

**MMPA/PAZ**  
Apt Elev 497'  
N20 36.1 W097 27.6

**JEPPesen**  
19 DEC 14 (13-1)

**POZA RICA, MEXICO**  
TAJIN

\*POZA RICA Tower 118.9



**Address:**

Carretera Mexico – Tuxpan km. 8,  
Tihuatlán Veracruz, C.P. 92900, Apartado  
Postal 265

Telephone: +52 (722) 273 0981

**Operational information:**

Operational hours: Winter 1300-0100 UTC  
/ Summer 1200-0000 UTC  
Customs and Immigration: NOT  
AVAILABLE  
Fuel available: Avgas 100/130, Jet A1  
Fire Cat: IV

**ADDITIONAL RUNWAY INFORMATION**

RWY				USABLE LENGTHS		WIDTH
	HIRL	REIL	PAPI-L (angle 3.0°)	Threshold	Glide Slope	
08	HIRL	REIL	PAPI-L (angle 3.0°)			148'
26	HIRL	REIL	PAPI-R (angle 3.0°)			45m

TAKE-OFF		FOR FILING AS ALTERNATE	
	All Rwys		
1 & 2 Eng	500-1	A	1000-2
3 & 4 Eng	500-1/2	B	
		C	



MMPA/PAZ  
TAJIN NATIONAL AIRPORT

**Arrivals**

1. Upon arrival Crew must follow ATC's instructions to taxi into General Aviation Apron.
2. When passengers descend the aircraft, one representative of Federal Police will check the aircraft and passengers' luggage.
3. Passengers will descend and walk into the General Aviation Terminal to take their ground transportation.

**Departures**

1. Crew and passenger arrive to the General Aviation Terminal.
2. Our Agent will be waiting for Crew and passengers, help them with their baggage and coordinate all services for departure.

