



MMNL/NLD
QUETZALCOATL INTERNATIONAL AIRPORT

MMNL/NLD

Apt Elev 484'
N27 26.6 W099 34.2

JEPPESEN NUEVO LAREDO, MEXICO
10 OCT 14 (10-9) Eff 16 Oct QUETZALCOATL INTL

Address:

Km. 5 Carretera a Piedras Negras
Apartado Postal 559, C.P. 88000

Telephone: +52 (722) 273 0981

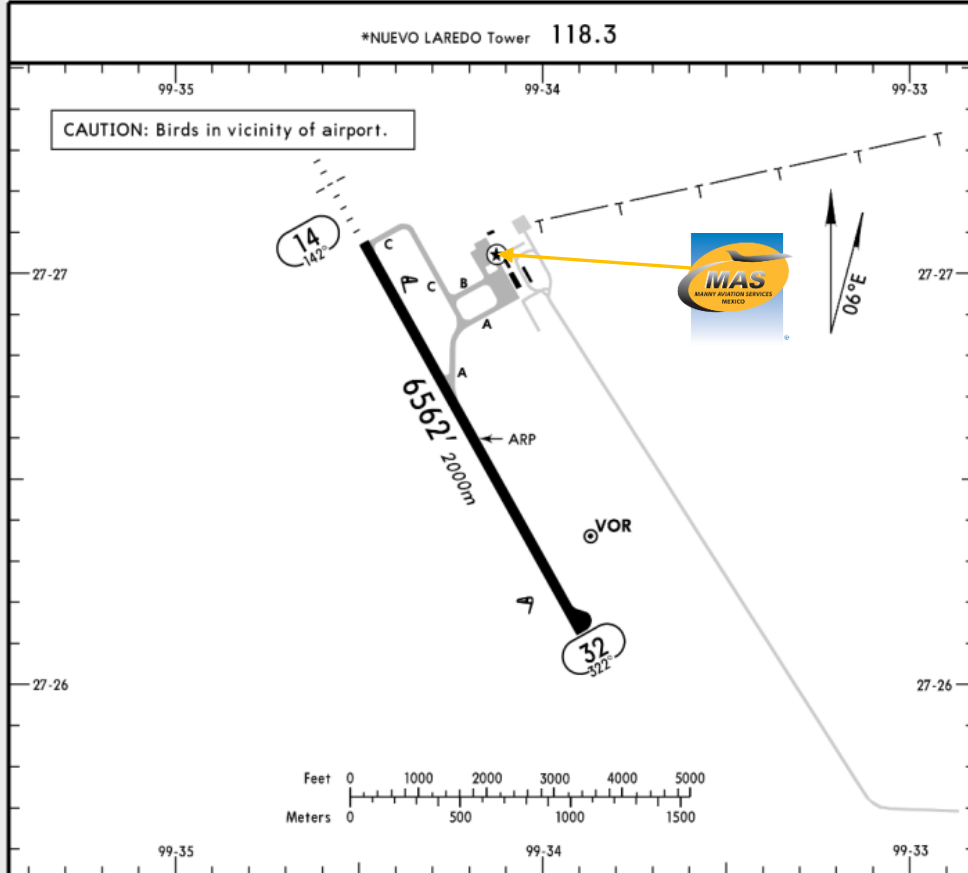
Operational information:

Operational hours: Winter 1400-0200 UTC
/ Summer 1300-0100 UTC

Customs and Immigration: During airport
operational hours.

Fuel available: Avgas 100/130, Jet A1.

Fire Cat: V



ADDITIONAL RUNWAY INFORMATION

RWY		USABLE LENGTHS			WIDTH
		Threshold	Landing Beyond Glide Slope	TAKE-OFF	
14	HIRL REIL SALS PAPI-L (angle 3.0°)				148'
32	HIRL REIL PAPI-L (angle 3.0°)				45m

TAKE-OFF

FOR FILING AS ALTERNATE

	Rwy 14	Rwy 32	
1 & 2 Eng	300-1	300-1¼	A
3 & 4 Eng			B
			C
			D
			800-2



MMNL/NLD
QUETZALCOATL INTERNATIONAL AIRPORT

Arrivals

1. Upon arrival Crew must follow ATC's instructions to taxi into General Aviation Apron.
2. Crew and passengers' passports will be given to one of our agents.
3. When passengers descend the aircraft, one representative of Customs, Federal Police and Agricultural Authorities will board the aircraft to verify that any passengers, nor luggage, remain on board. Please remember that no food can enter Mexican territory.
4. Passengers will descend and walk into the General Aviation Terminal to follow Immigration and Customs'

procedures; all bags, backpacks, handbags, briefcases, etc., must be taken inside the terminal to be checked by Customs Authorities, passengers must be with their luggage all the time. Passports will be taken to the Immigration Office to complete the arrival process.

5. The whole process will take around 15-20 minutes.

Departures

1. Our agents will take Crew and passenger's passports among their luggage.
2. Luggage will be taken into the x ray machine for security purposes.
3. The whole process will take around 15-20 minutes.

