



MMMZ / MZT
GRL. RAFAEL BUELNA INTERNATIONAL AIRPORT

MMMZ/MZT

Apt Elev 38'
N23 09.7 W106 15.9

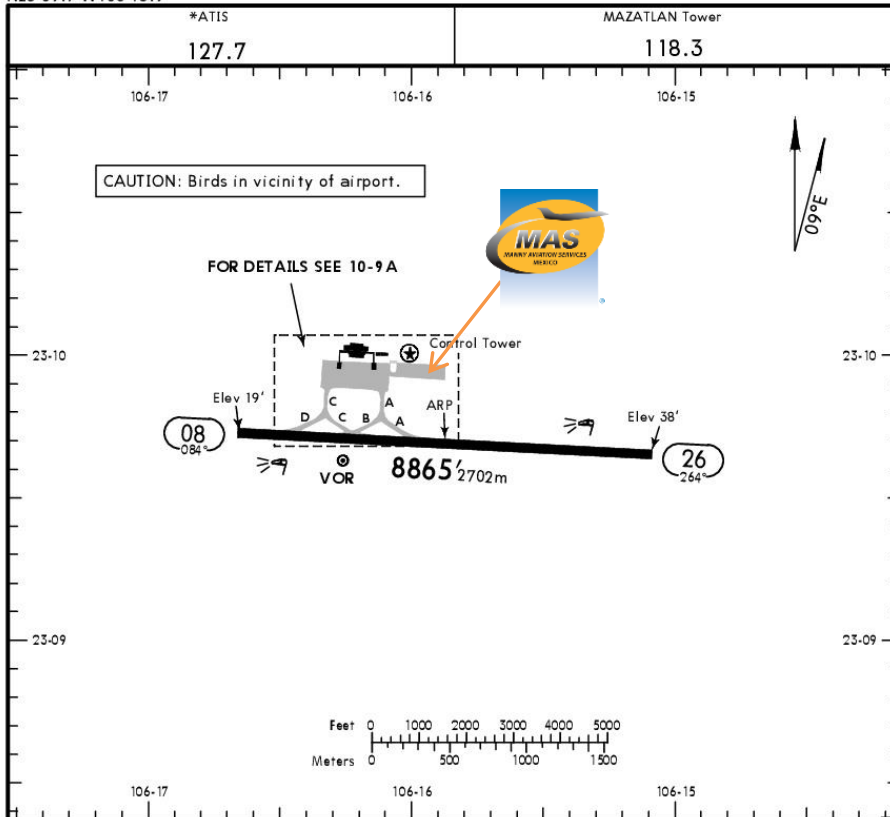


3 NOV 17

10-9 E11 9 No

MAZATLAN, MEXICO

GEN RAFAEL BUELNA INTL



Address:

Carretera Internacional al Sur s/n
Mazatlán, Sinaloa. C.P. 82000
Telephone: +52 (722) 273 0981

Operational information:

Operational hours: 24 Hrs
Fuel available: Avgas 100/130 Jet A1
Fire Cat: VII

ADDITIONAL RUNWAY INFORMATION

RWY	HIRL REIL PAPI-L (angle 3.0°)	USABLE LENGTHS			WIDTH
		Threshold	Glide Slope	TAKE-OFF	
08 26	HIRL REIL PAPI-L (angle 3.0°)				197' 60m

TAKE-OFF	FOR FILING AS ALTERNATE	
	Precision	Non-Precision
All Rwy's		
1 & 2 Eng	400-1	
3 & 4 Eng	300-3/4	
	A B C D	600-2 800-2

CHANGES: None.

© JEPPesen, 1999, 2017. ALL RIGHTS RESERVED.



Arrivals

1. Upon arrival Crew must follow ATC instructions to taxi into General Aviation Apron.
2. Crew and passengers' passports will be given to one of our Agents.
3. Passengers will descend and walk into the General Aviation Terminal to follow Customs and Immigration procedures; all bags, backpacks, handbags, briefcases must be taken inside the terminal to be checked by Customs and Federal Police Authorities, passengers must be with their luggage all the time.
4. The whole procedure will take around 20-30 minutes; this will depend on how many passengers arrive.

Departures

1. Our Agents will take Crew and passenger passports along with the luggage.
2. Once passengers arrive at the General Aviation Terminal they will walk through Customs and Immigration stands, once finished they will return to the aircraft and passports will be returned.
3. The whole procedure will take around 20-30 minutes; this will depend on how many passengers arrive and also on how many aircrafts be at the position at the time.

