



MMMY/MTY
 GRAL. MARIANO ESCOBEDO INTERNATIONAL AIRPORT

MMMY/MTY

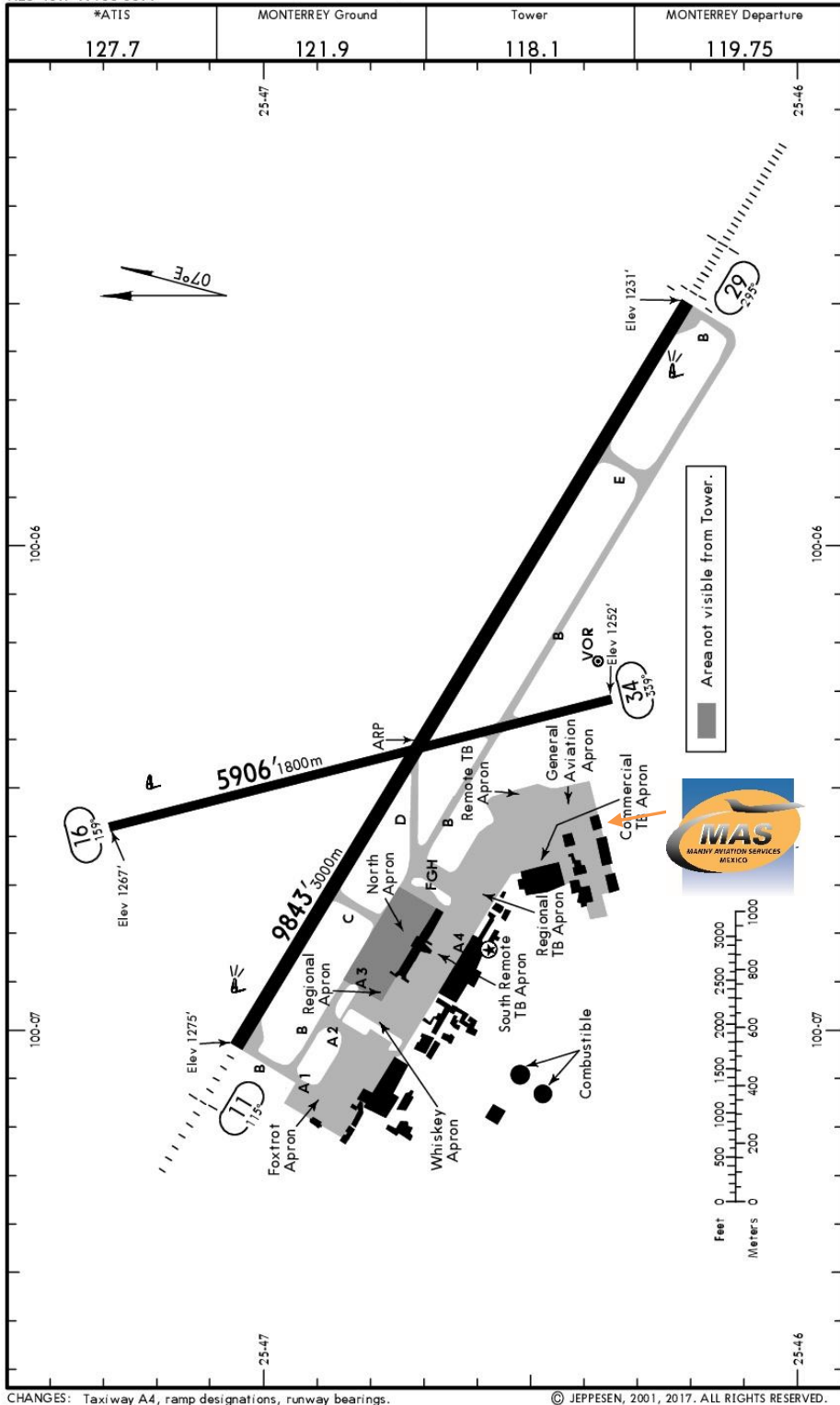
Apt Elev 1276'
 N25 46.7 W100 06.4

JEPPESEN

14 JUL 17
 EII 20 Jul (10-9)

MONTERREY, MEXICO

GEN MARIANO ESCOBEDO INTL



Address:

Carretera Miguel Alemán Km. 24,
 Apodaca, Nuevo León. C.P. 66600
 Telephone+52 (722) 273 0981

Operational information:

Operational hours: 24 hrs.
 Customs and immigration: 24 hrs.
 Fuel available: Avgas 100/130, Jet A1
 Fire Cat: VII

CHANGES: Taxiway A4, ramp designations, runway bearings.

© JEPPESEN, 2001, 2017. ALL RIGHTS RESERVED.



MMMY/MTY
GRAL. MARIANO ESCOBEDO INTERNATIONAL AIRPORT

Arrivals

1. Upon arrival Crew must follow ATC instructions to taxi into the FBO.
2. Crew and passengers' passports will be given to one of our Agents.
3. Passengers will descend and walk into the FBO to follow Customs and Immigration procedures; all bags, backpacks, handbags, briefcases must be taken inside the FBO to be checked by the Customs and Federal Police Authorities, passengers must be with their luggage all the

time. When passengers descend the aircraft, one representative of Customs, Federal Police and Agricultural Authorities will embark the aircraft to check that any passenger nor luggage are on board, please remember that no food can be introduced into Mexican territory.

Departures

1. Our Agents will take Crew and passengers' passports among with the luggage.
2. Once done with procedures, they will embark the aircraft.

