

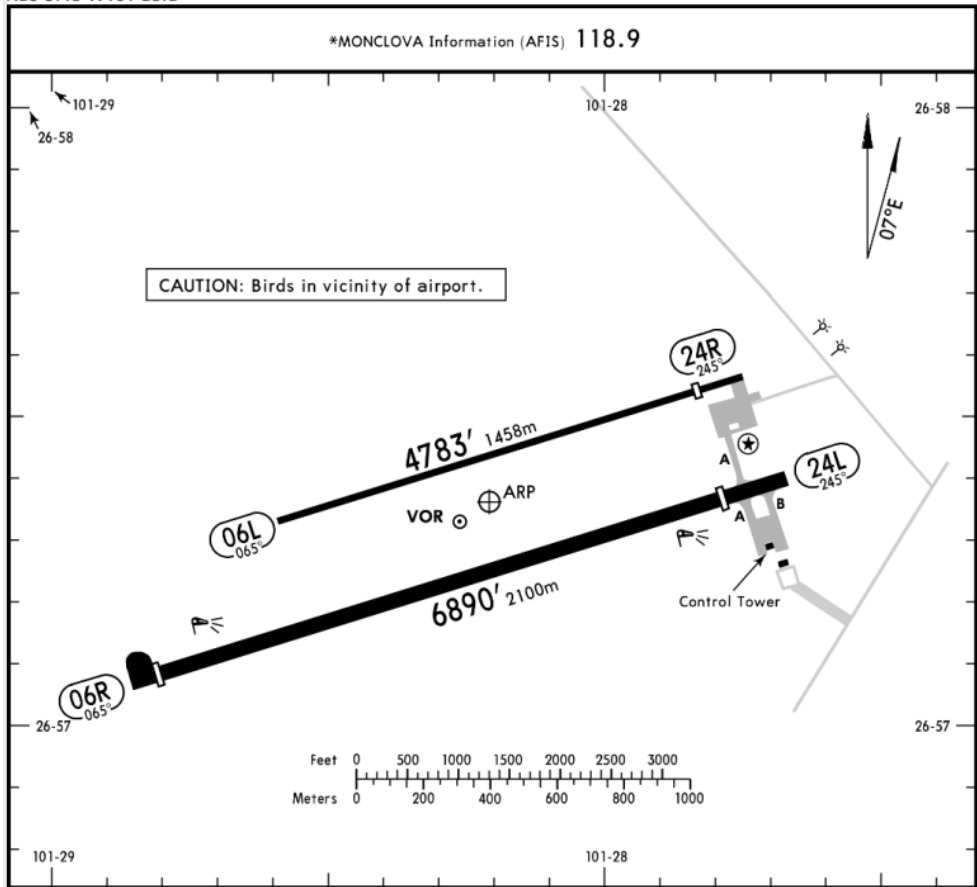


MMM/ MOV
 VENUSTIANO CARRANZA INTERNATIONAL AIRPORT

MMM/LOV
 Apt Elev 1864'
 N26 57.3 W101 28.2

JEPPESEN
 24 MAR 17 (10-9) Eff 30 Mar

MONCLOVA, MEXICO
 MONCLOVA INTL



Address:
 Libramiento Poniente y carretera federal 30
 Cd. Frontera, Coahuila.

Telephone +52 (722) 273 0981

Operational information:
 Operational hours: Winter 1300-0100 UTC /
 Summer 1200-0000 UTC
 Customs and immigration: During airport
 operational hours
 Fuel available: Avgas 100/130 Jet A1
 Fire Category: III

ADDITIONAL RUNWAY INFORMATION

RWY		USABLE LENGTHS		TAKE-OFF	WIDTH
		Threshold	Landing Beyond		
06L				4314' 1315m	66'
24R		4314' 1314m			20m
06R	HIRL PAPI-L (angle 3.0°)	6611' 2015m		6234' 1900m	148'
24L		6234' 1900m		6611' 2015m	45m

TAKE-OFF

FOR FILING AS ALTERNATE

	Rwys 06R, 24L		Rwys 06L, 24R	A	B	C	D
	DAY	NIGHT	DAY				
1 & 2 Eng	500-1		VFR	1000-2			
3 & 4 Eng	500-1/2						



MMM/ MOV
VENUSTIANO CARRANZA INTERNATIONAL AIRPORT

Arrivals

1. Upon arrival Crew must follow ATC's instructions to taxi into General Aviation Apron.
2. Crew and passengers' passports will be given to one of our Agents.
3. Passengers will descend and walk into the building to follow Immigration and Customs' procedures; all bags, backpacks, handbags, briefcases, etc., must be taken inside the terminal to be checked by Customs Authorities, passengers must be with their luggage all the time.
4. The whole process will take around 20-30 minutes; this will depend on how many passengers arrive.

Departures

1. Our Agents will take Crew and passenger's passports among their luggage.
2. Once passengers arrive, they will board the aircraft and will be towed to Immigration and Customs' stand, then, passengers will descend and walk to the terminal to a Federal Police revision, once finished they will return to the aircraft and passports will be returned.
3. The whole procedure will take around 20-30 minutes; this will depend on how many passengers arrive and also on how many aircrafts be at the position at the time.

