

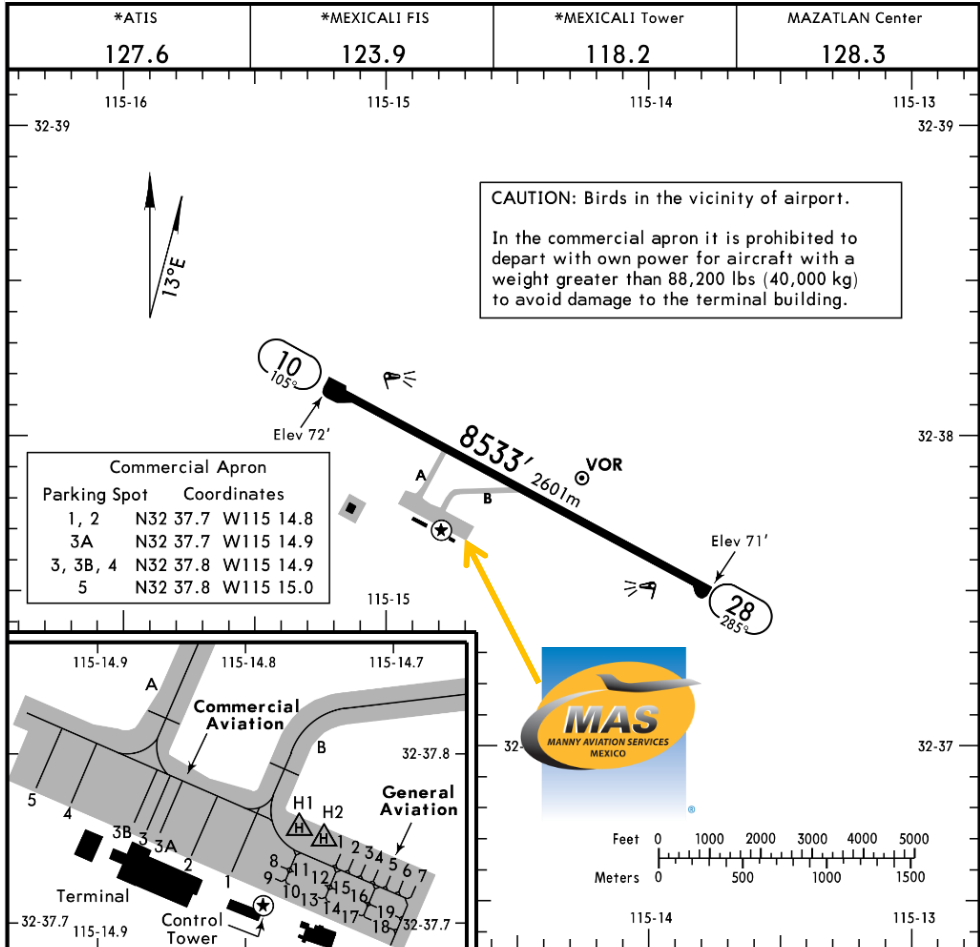


MMML/MXL
 GRAL. RODOLFO SÁNCHEZ TABOADA INTERNATIONAL AIRPORT

MMML/MXL
 Apt Elev 74'
 N32 37.8 W115 14.5

JEPPESEN
 27 JAN 17
 Eff 2 Feb (13-1)

MEXICALI, MEXICO
 GEN RODOLFO SANCHEZ TABOADA INTL



Address:

Carretera Mesa de Andrade Km 23.5 a Mexicali, Baja California Norte C.P. 21000
 Telephone: +52 (722) 273 0981

Operational information:

Operational hours: Winter 1400-0900 UCT / Summer 1300-0800 UTC
 Customs and immigration: Only on airport operational hours
 Fuel available: Avgas 100/130, Jet A1
 Fire Cat: VII

ADDITIONAL RUNWAY INFORMATION

RWY	USABLE LENGTHS LANDING BEYOND	TAKE-OFF	WIDTH
10 28	HIRL REIL PAPI-L (angle 3.0°)		148' 45m
TAKE-OFF			FOR FILING AS ALTERNATE
All Rwys			
1 & 2 Eng	600-2	A	800-2
3 & 4 Eng	300-1	B	
		C	
		D	



MMML/MXL
GRAL. RODOLFO SÁNCHEZ TABOADA INTERNATIONAL AIRPORT

Arrivals

1. Upon arrival Crew must follow ATC's instructions to taxi into to the General Aviation Apron.
2. Crew and passengers passports will be given to one of our Agents.
3. Passengers will descend and walk into the General Aviation Terminal to follow Immigration and Customs' procedures; all bags, backpacks, handbags, briefcases, etc., must be taken inside the terminal to be checked by Customs and Federal Police Authorities, passengers must be with their luggage all the time. The whole procedure will take

around 20-30 minutes; this will depend on how many passengers arrive.

Departures

1. Our Agents will take Crew and passenger's passports among their luggage.
2. Passengers and Crew will go through Customs and Immigration. And then they will board the aircraft.
3. The whole procedure will take around 20-30 minutes; this will depend on how many passengers arrive and also on how many aircrafts be at the position at the time.

