

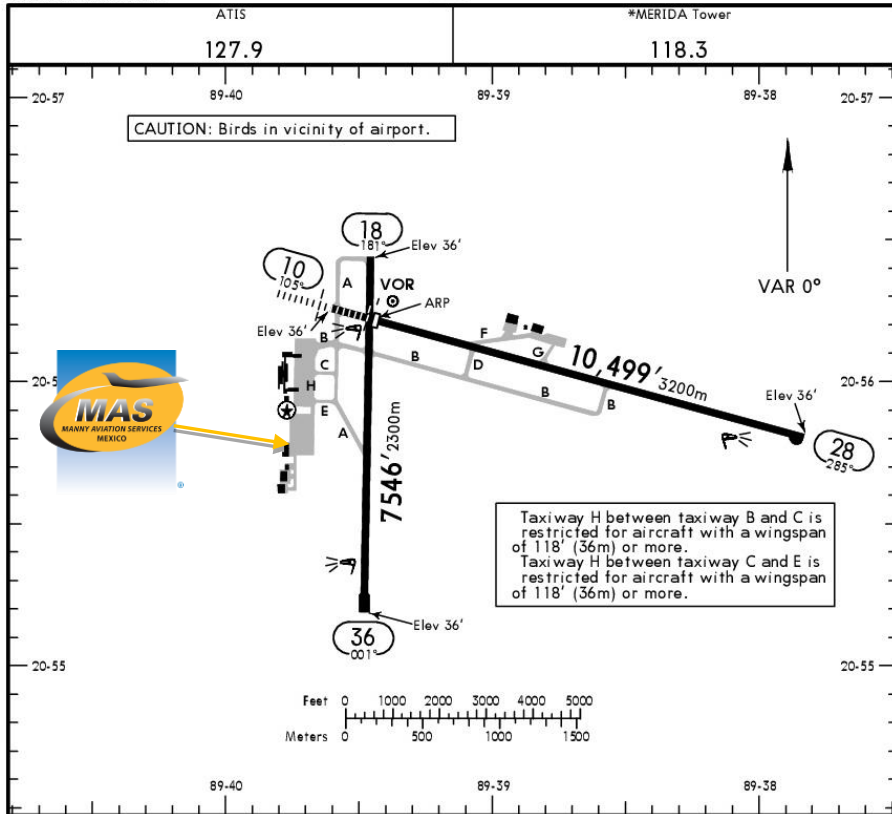


MMMD/MID  
LIC. MANUEL CRECENCIO REJÓN INTERNATIONAL AIRPORT

MMMD/MID  
Apt Elev 38'  
N20 56.2 W089 39.5

JEPPESEN  
12 JAN 18 (10-9)

MERIDA, MEXICO  
MERIDA INTL



**Address:**

Carretera Mérida-Umán km 4.5, Mérida, Yucatán.C.P. 97291

Telephone: +52 (722) 273 0981

**Operational information:**

Operational hours: 24 hrs.

Fuel available: Avgas 100/130 Jet A1

Fire Cat: VII

**NOTE**

The FBO service is available. For arrivals and departures, Immigration and Customs will be performed at the FBO.

ADDITIONAL RUNWAY INFORMATION

RWY		USABLE LENGTHS		TAKE-OFF	WIDTH
		LANDING BEYOND Threshold	Glide Slope		
10	HIRL ALSF-I PAPI-L (angle 3.0°)	9449' 2880m	8326' 2538m		151' 46m
28	HIRL PAPI-L (angle 3.0°)				
18	HIRL PAPI-L (angle 3.0°)				148' 45m
36	HIRL PAPI-L (angle 3.0°)				

TAKE-OFF

FOR FILING AS ALTERNATE

	Rwys 10, 18, 28	Rwy 36	Precision / Non-Precision	
	1 & 2 Eng	300-1	500-1	A
3 & 4 Eng	200-1/2	B		
			C	
			D	

For departure procedure and MCAs see SIDs.

CHANGES: Notes, usable lengths, magnetic variation.

© JEPPESEN, 2001, 2018. ALL RIGHTS RESERVED.



### Arrivals

1. Upon arrival Crew must follow ATC's instructions to taxi into General Aviation Apron.
2. Passengers will descend to follow Customs and Immigration procedures; all bags, backpacks, handbags, briefcases, etc., must be taken inside the FBO to be checked by the Customs and Federal Police Authorities, passengers must be with their luggage all the time.
3. The whole procedure will take around 20-30 minutes; this will depend on how many passengers arrive.

### Departures

1. Our agents will take Crew and passengers' passports among with the luggage.
2. Once passengers arrive to the FBO, they will go thru Customs and Immigration stand, once finished, they will board the aircraft, the passports will be returned.
3. The whole process will take around 20-30 minutes; this will depend on how many passengers arrive and also on how many aircrafts be in the position at the time.

