



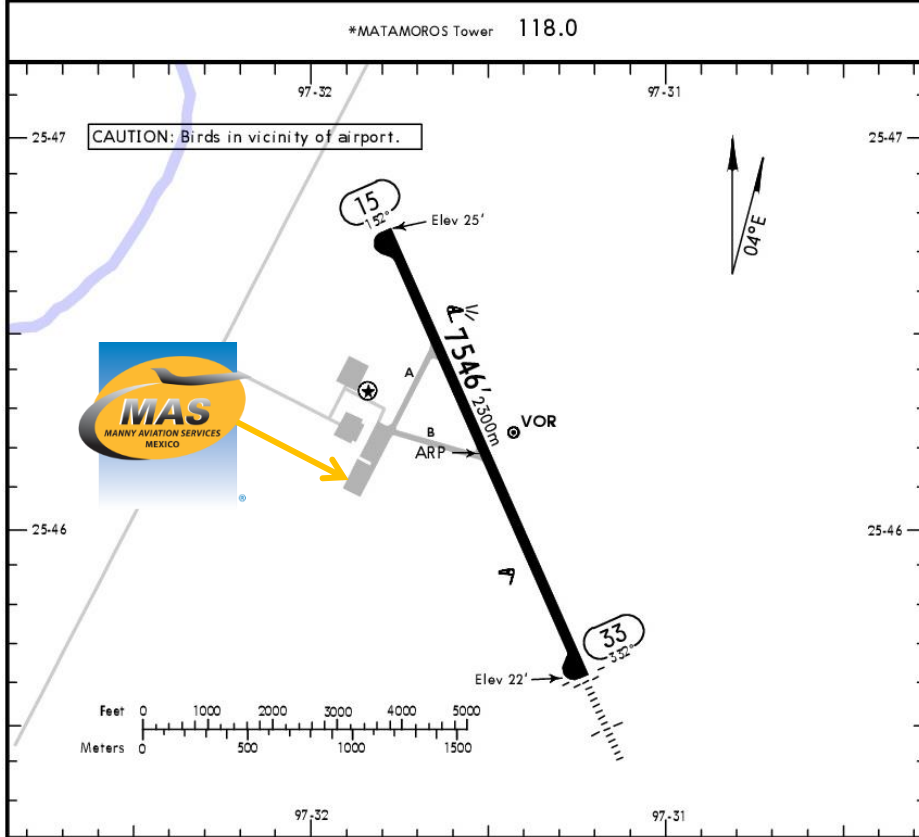
MMMA/MAM  
GRAL. SERVANDO CANALES INTERNATIONAL AIRPORT

MMMA/MAM

Apt Elev 25'  
N25 46.2 W097 31.5



MATAMOROS, MEXICO  
GEN SERVANDO CANALES INTL



**Address:**

Km 9.5 Carretera a Ciudad Victoria,  
Ejido El Galaneño, Matamoros,  
Tamaulipas.C.P. 87560

Telephone:+52 (722) 273 0981

**Operational information:**

Operational hours: Winter 1400-0200 UTC /  
Summer 1300-0100 UTC

Customs and immigration: Only on airport  
operational hours

Fuel available: Avgas 100/130, Jet A1

Fire Cat: VI

ADDITIONAL RUNWAY INFORMATION

RWY	HIRL	REIL	PAPI-L (angle 3.0°)	USABLE LENGTHS		TAKE-OFF	WIDTH
				Threshold	Glide Slope		
15			PAPI-L (angle 3.0°)				148'
33			SALSF PAPI-L (angle 3.0°)				45m

TAKE-OFF & DEPARTURE PROCEDURE

FOR FILING AS ALTERNATE

TAKE-OFF & DEPARTURE PROCEDURE		FOR FILING AS ALTERNATE	
All Rwys			
1 & 2 Eng	300-1	A	800-2
3 & 4 Eng	300-1/2	B	
		C	
		D	

For departure procedures and MCAs see  
Matamoros Departures 10-3 and 10-3A.

CHANGES: Rwy bearings, rwy elevations.

© JEPPESEN, 1999, 2017. ALL RIGHTS RESERVED.



### Arrivals

1. Upon arrival Crew must follow ATC's instructions to taxi into General Aviation Apron.
2. Crew and passengers' passports will be given to one of our Agents.
3. Passengers will descend and walk into General Aviation Terminal to follow Immigrations and Customs' procedures; all bags, backpacks, handbags, briefcases, etc., must be taken inside the terminal to be checked by Customs and Federal Police Authorities, passengers must be with their luggage all the time.

4. The whole procedure will take around 20-30 minutes; this will depend on how many passengers arrive.

### Departures

1. Our agents will take Crew and passengers' passports among with their luggage.
2. Passengers and Crew will go thru Immigration and Customs and then they will board the aircraft.
3. The whole procedure will take around 20-30 minutes; this will depend on how many passengers arrive and also on how many aircraft be at the position at the time.

