



MMLT/LTO
LORETO INTERNATIONAL AIRPORT.

MMLT/LTO

Apt Elev 34'
N25 59.4 W111 20.8



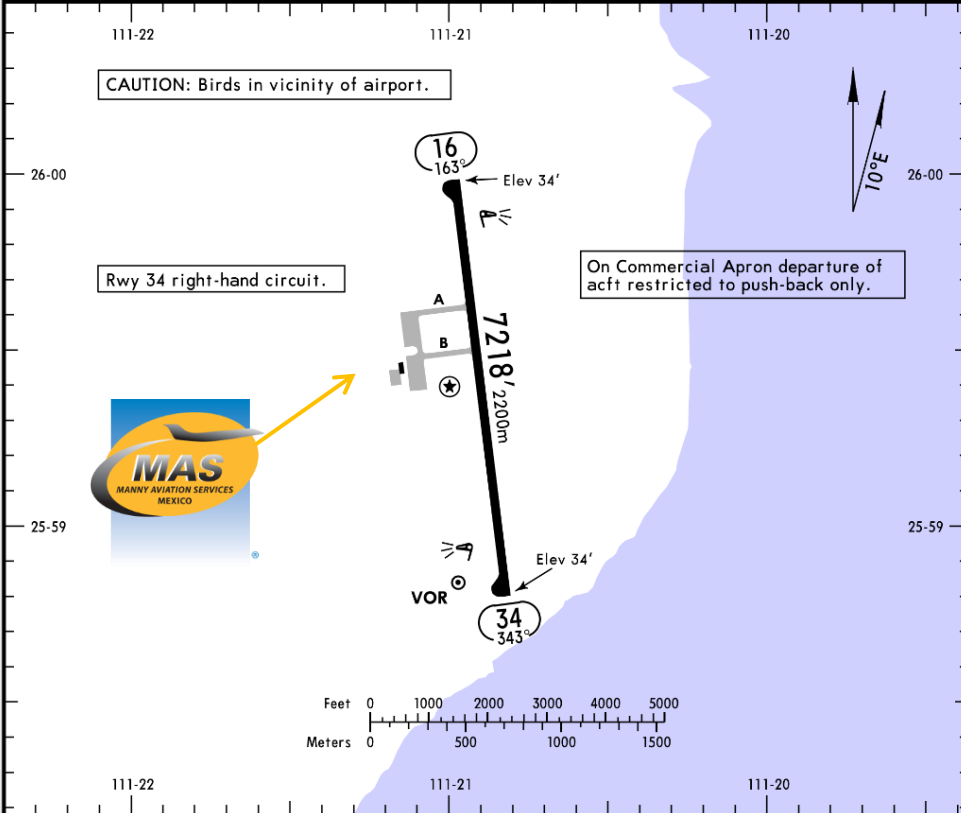
27 MAR 15 (13-1)

LORETO, MEXICO

LORETO INTL

*LORETO Tower
118.4

UNICOM
122.8



Address:

Km 7 Carretera Transpeninsular Nopolo,
Loreto, Baja California Sur
P.O. Box 8
Telephone: +52 (722) 273 0981

Operational information:

Operational hours: Winter 1400-0200 UTC /
Summer 1300-0100 UTC
Customs and immigration: Only on airport
operational hours
Fuel available: Avgas 100/130, Jet A1
Fire Cat: V

ADDITIONAL RUNWAY INFORMATION

RWY		USABLE LENGTHS			WIDTH
		Threshold	Landing Beyond Glide Slope	TAKE-OFF	
16	HIRL REIL PAPI-L (angle 3.0°)				148'
34	HIRL REIL PAPI-L (angle 3.0°)				45m

① Use restricted to 5 NM due to obstruction beyond 5 NM.

	TAKE-OFF			FOR FILING AS ALTERNATE	
	Rwy 16	Rwy 34		DAY	NIGHT
		DAY	NIGHT		
1 & 2 Eng	500-1	500-1	700-1	A B C D	800-2½
3 & 4 Eng					



MMLT/LTO
LORETOINTERNATIONAL AIRPORT.

Arrivals

1. Upon arrival Crew must follow ATC's instructions to taxi into General Aviation Apron.
2. Crew and passengers' passports will be given to one of our agents.
3. Passengers will descend and walk into the General Aviation Terminal to follow Immigration and Customs' procedures; all bags, backpacks, handbags, briefcases, etc., must be taken inside the terminal to be checked by Customs Authorities, passengers must be with their luggage all the time.
4. The whole procedure will take around 20-30 minutes; this will depend on how many passengers arrive.

Departures

1. Our Agents will take Crew and passengers' passports among their luggage.
2. Passengers and Crew will go thru Immigration and Customs and then they will board the aircraft.
3. The whole procedure will take around 20-30 minutes; this will depend on how many passengers arrive and also on how many aircrafts be at the position at the time.

