



MMLP / LAP  
 GRAL MANUEL MARQUEZ DE LEON INTERNATIONAL AIRPORT

MMLP/LAP

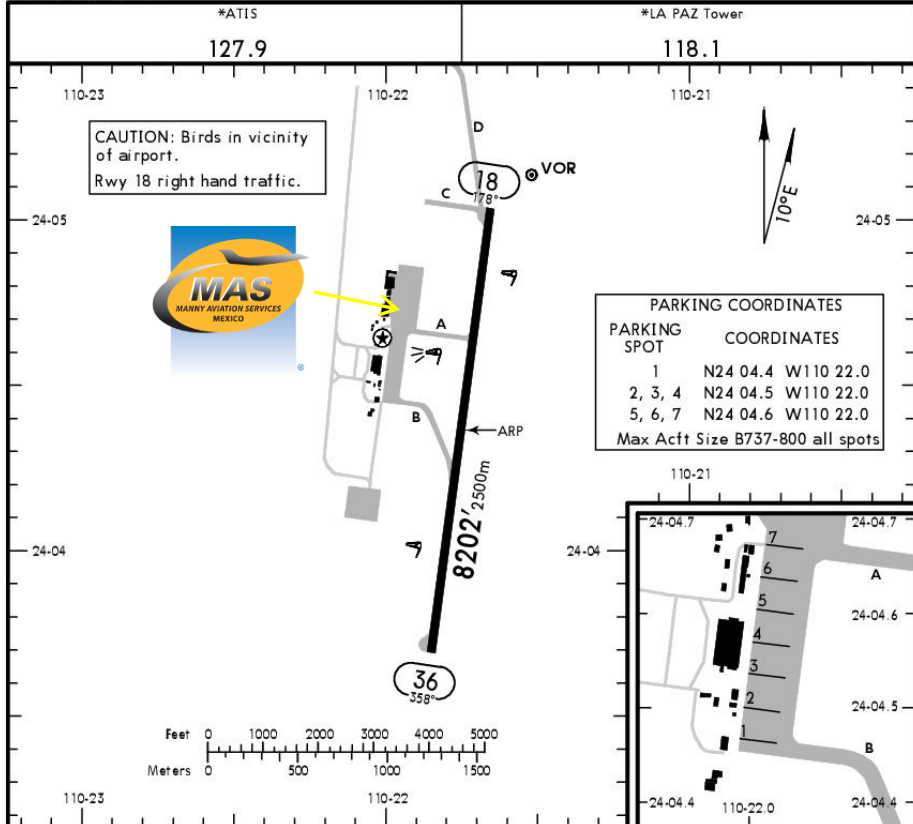
Apt Elev 69'  
 N24 04.4 W110 21.8

17 JUL 15

(11-1)

GEN MANUEL MARQUEZ DE LEON INTL

LA PAZ, MEXICO



**Address:**

Km. 13 Carretera Transpeninsular, La Paz,  
 Baja California Sur.C.P. 23201  
 Telephone: +52 (722) 273 0981

**Operational information:**

Operational hours: Winter 1400-0600 UTC /  
 Summer 1300-0500 UTC  
 Customs and immigration: Only on airport  
 operational hours  
 Fuel available: Avgas 100/130 Jet A1  
 Fire Cat: VII

RWY	USABLE LENGTHS	LANDING BEYOND			TAKE-OFF	WIDTH
		Threshold	Glide Slope			
18 36	HIRL REIL PAPI-L (angle 3.0°)				148' 45m	

	TAKE-OFF	FOR FILING AS ALTERNATE	
		Precision	Non-Precision
1 & 2 Eng	600-2	A B C D	1000-3
3 & 4 Eng	300-1		

For departure procedures and MCA's see La Paz Departures 10-3, 10-3A.

CHANGES: Enhanced accuracy. © JEPPESEN, 1999, 2015. ALL RIGHTS RESERVED.



MMLP / LAP  
GRAL MANUEL MARQUEZ DE LEON INTERNATIONAL AIRPORT

### Arrivals

1. Upon arrival Crew must follow ATC instructions to taxi into General Aviation Apron.
2. Crew and passengers' passports will be given to one of our Agents.
3. Passengers will descend and walk into the General Aviation Terminal to follow Customs and Immigration procedures; all bags, backpacks, handbags, briefcases must be taken inside the terminal to be checked by Customs and Federal Police Authorities, passengers must be with their luggage all the time.
4. The whole procedure will take around 20-30 minutes, this will depend on how many passengers arrive.

### Departures

1. Our Agents will take Crew and passengers' passports along with the luggage.
2. Once passengers arrive they will board the aircraft and will be towed to Customs and Immigration stand, then passengers will descend and walk to the General Aviation Terminal to a Federal Police review, once finished they will return to the aircraft and passports will be returned.
3. The whole procedure will take around 20-30 minutes, this will depend on how many passengers arrive and also on how many aircrafts be at the position at the time.

