

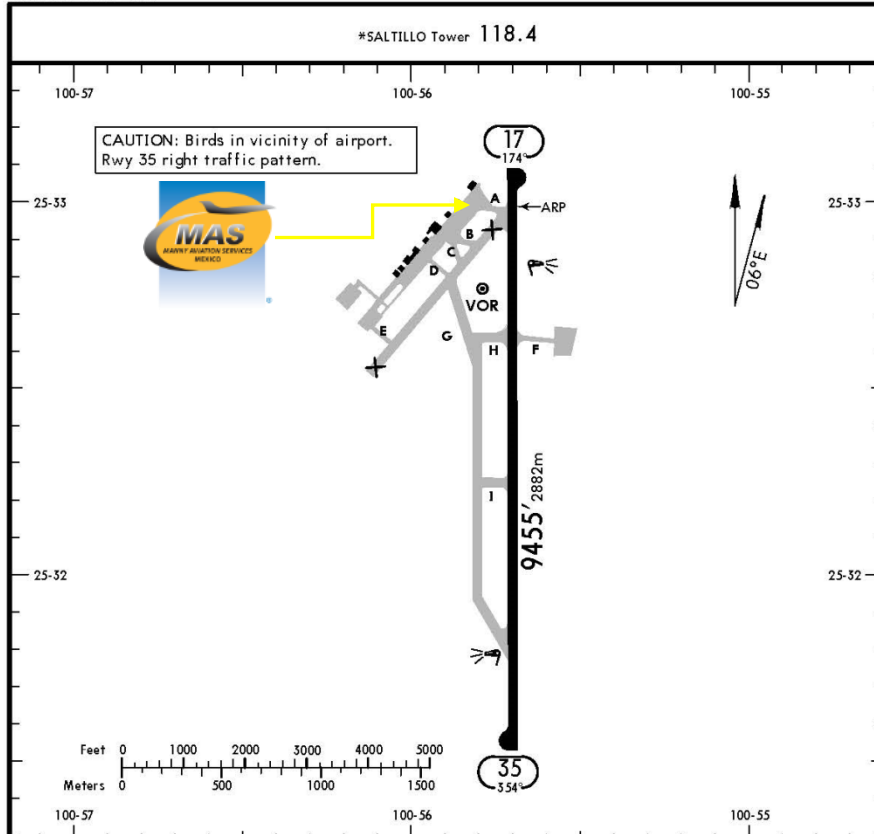


MMIO / SLW  
PLAN DE GUADALUPE INTERNATIONAL AIRPORT

MMIO/SLW  
Apt Elev 4782'  
N25 33.0 W100 55.7

JEPPESEN  
8 SEP 17 (10-9) Eff 14 Sep

SALTILLO, MEXICO  
PLAN DE GUADALUPE INTL



**Address:**

Km. 13.5 Carretera Saltillo-Monterrey,  
Ramos Arizpe, Coahuila. C.P. 25900  
Telephone: +52 (722) 273 0981

**Operational information:**

Operational hours: Winter 1300-0300 UTC /  
Summer 1200-0200 UTC  
Customs and immigration: During  
operational hours  
Fuel available: Avgas 100/130 Jet A1  
Fire Cat: V

ADDITIONAL RUNWAY INFORMATION

RWY	LANDING BEYOND	USABLE LENGTHS		TAKE-OFF	WIDTH
		Threshold	Glide Slope		
17 35	HIRL PAPI-L (angle 3.0°)		8473' 2583m		148' 45m

TAKE-OFF & DEPARTURE PROCEDURE

FOR FILING AS ALTERNATE

	Rwy 35		Rwy 17		A B C D
	DAY	NIGHT	DAY	NIGHT	
1 & 2 Eng	500-1	500-1½	VFR	NA	1300-3
3 & 4 Eng	500-½	500-1			

Departure MCAs:  
 V-39 & UJ-40 to NLD 8400';  
 V-10 & UJ-10-J-29 to MTY 7900';  
 V-55 & UJ-38 to CVM 10400';  
 UJ-31 to SLP 8500';  
 V-39 & UJ-40 to CDR 8600';  
 J-29 to DGO 6500';  
 V-10 to TRC 6500';  
 UJ-38 to DEL 6200';  
 V-55 & UJ-31 to MOV 6200'.

CHANGES: Rwy bearings, magnetic variation, departure procedure & MCAs. © JEPPESEN, 1998, 2017. ALL RIGHTS RESERVED.



MMIO / SLW  
PLAN DE GUADALUPE INTERNATIONAL AIRPORT

**Arrivals**

1. Upon arrival Crew must follow ATC instructions to taxi into General Aviation Apron.
2. Crew and passengers' passports will be given to one of our Agents.
3. Passengers will descend and walk into the building to follow Customs and Immigration procedures; all bags, backpacks, handbags, briefcases must be taken inside the terminal to be checked by Customs and Federal Police Authorities, passengers must be with their luggage all the time.
4. The whole procedure will take around 20-30 minutes; this will depend on how many passengers arrive.

**Departures**

1. Our Agents will take Crew and passengers' passports among with the luggage.
2. Once passengers arrive they will board the aircraft and will be towed to Customs and Immigration stand, then passengers will descend and walk to the terminal to a Federal Police review, once finished they will return to the aircraft and passports will be returned.
3. The whole procedure will take around 20-30 minutes; this will depend on how many passengers arrive and also on how many aircrafts are in position at the time.

