

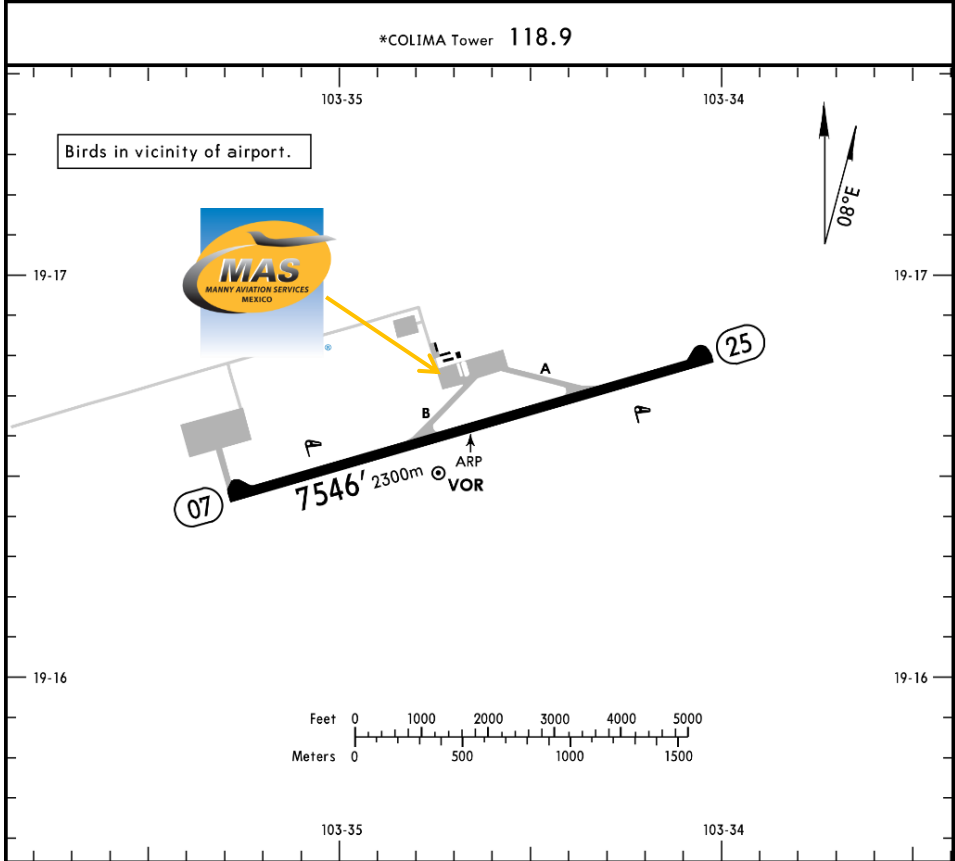


MMIA/CLQ
LIC. MIGUEL DE LA MADRID NATIONAL AIRPORT

MMIA/CLQ
Apt Elev 2467'
N19 16.6 W103 34.7

JEPPESEN
27 JAN 17 (10-9) Eff 2 Feb

COLIMA, MEXICO
COLIMA



Address:
Domicilio conocido S/N, Buenavista,
Colima, Colima.C.P. 28590
Telephone:+52 (722) 273 0981

Operational information:
Operational hours: Winter 1300-0100 UTC
/ Summer 1200-0000 UTC
Customs and Immigration: Not Available.
Fuel available: Avgas 100/130, Jet A1
Fire Cat: IV

| RWY | ADDITIONAL RUNWAY INFORMATION | | USABLE LENGTHS | | TAKE-OFF | WIDTH |
|----------|-------------------------------|----------------|----------------|-------------|----------|-------------|
| | Threshold | LANDING BEYOND | Threshold | Glide Slope | | |
| 07 25 | MIRL PAPI-L (angle 3.0°) | | | | | 148' 45m |
| | | | | | | |
| | | | | | | |
| | | | | | | |

| TAKE-OFF & DEPARTURE PROCEDURE | | FOR FILING AS ALTERNATE | |
|--------------------------------|--------|-------------------------|----------------------------|
| | Rwy 25 | Rwy 07 | |
| 1 & 2 Eng | 500-1 | 800-1½ | A B C D 1000-3 |
| 3 & 4 Eng | | 500-¾ | |

DEPARTURE PROCEDURE: MCAs for departing the station,
V-61 & J-25 to GDL 14400'; V-18 & UJ-18 to UPN 9200';
UJ-9 to ZIH 7000'; V-18 & UJ-18 to ZLO 6300'; UJ-9 to PVR 8200'.



MMIA/CLQ
LIC. MIGUEL DE LA MADRID NATIONAL AIRPORT

Arrivals

1. Upon arrival Crew must follow ATC's instructions to taxi into General Aviation Apron.
2. When passengers descend from AC, one representative of Federal Police will check AC and passengers' luggage.
3. Passengers will descend and walk into General Aviation Terminal to take their ground transportation.

Departures

1. Crew and passengers arrive to General Aviation Terminal.
2. Our Agent will be waiting for Crew and passengers help them with baggage and coordinate all services for departure.

